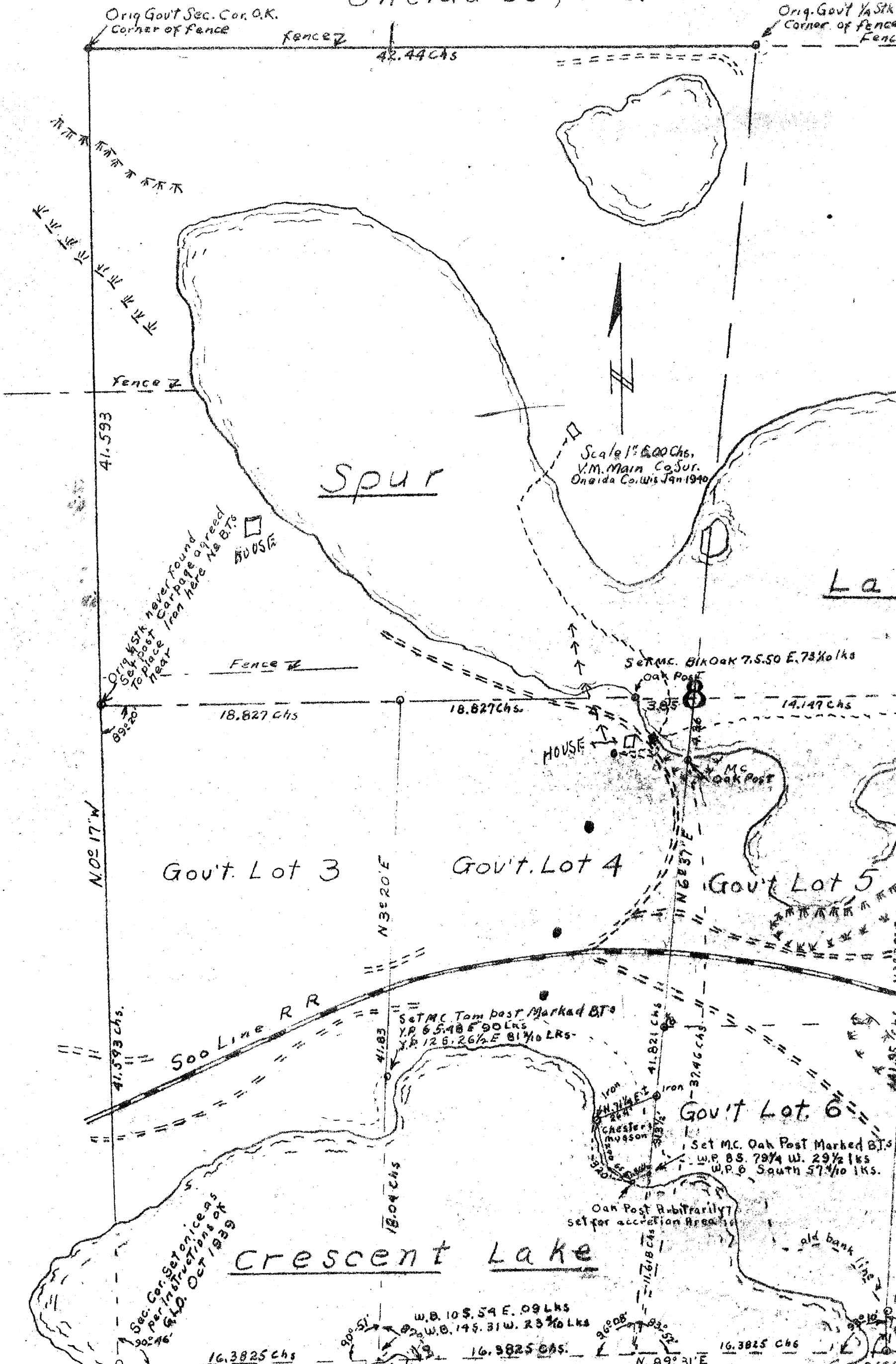


Survey and Map Section 8 T-36-N. R-8-E Oneida Co., Wis.



Orig Gov't Sec. Cor. O.K.
Corner of fence

Orig. Gov't 1/4 Stk
Corner of fence

SPUR

La

Gov't Lot 3

Gov't Lot 4

Gov't Lot 5

Gov't Lot 6

Crescent Lake

81 IV

Orig. G.L.A. M.C.
New Brass Cap stamped in Conc.
Post Approved by G.L.O. Oct 1938

Section Line Surveyed & Established
County Surveyor, Oneida County
Jan. 23rd 1940 and found Correct

nd map
36-N. R-8-E
Co., Wis.

A118

