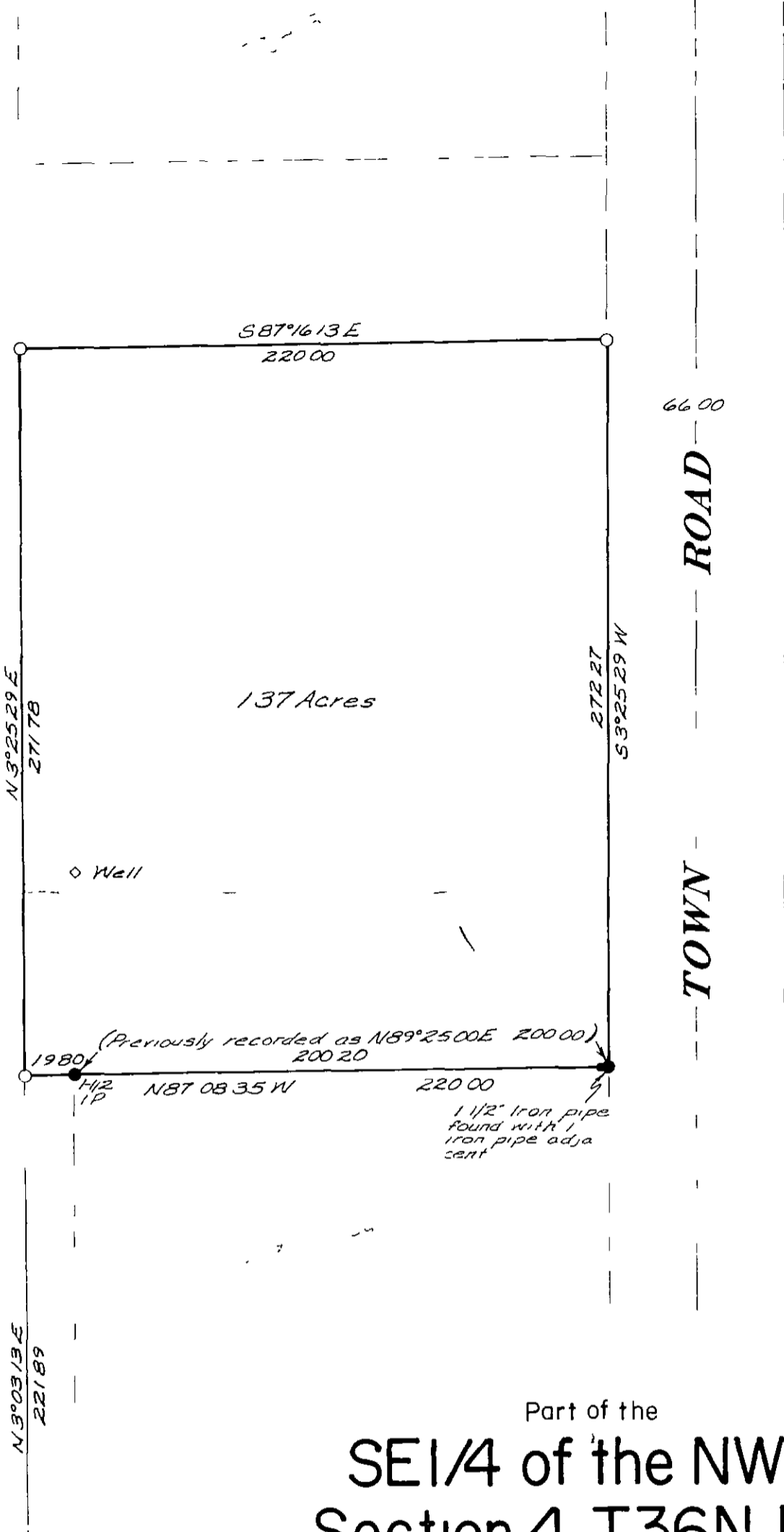


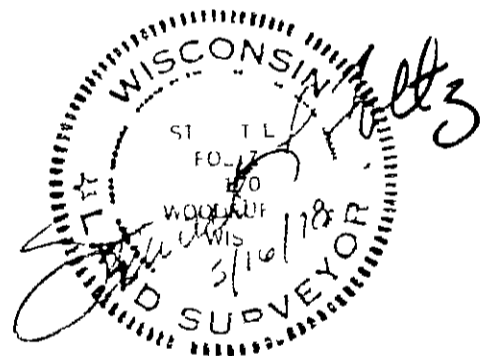
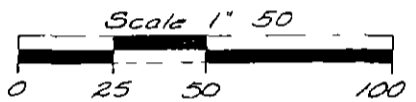
9 27 95

A 1185



Bearings based on the south line of the SE 1/4 of the NW 1/4 S 87° 54' 00" E (assumed)

- = 1 1/4 x 30 Iron rod set
- = Iron pipe found in place sizes as noted



Part of the  
**SE 1/4 of the NW 1/4**  
**Section 4, T36N, R9E**

Pelican Township  
 Oneida County, Wisconsin

BT's  
 Power Pole N 82° W, 11.8  
 10" J Pine N 40° W, 63.5  
 8" N Pine S 31° W, 64.8



Note  
 T's to one quarter corner from a survey by William S. Immler, J.S.B. on 12/28/77 and revised 9/78

Drafted by M. Sulliff

MAP # **A 1185**  
 DATE FILED **33 APR 14 2003**  
 BY \_\_\_\_\_  
 DESCRIBED BY \_\_\_\_\_ ED ✓  
 COUNTY CLERK'S OFFICE

1185

A 1185