

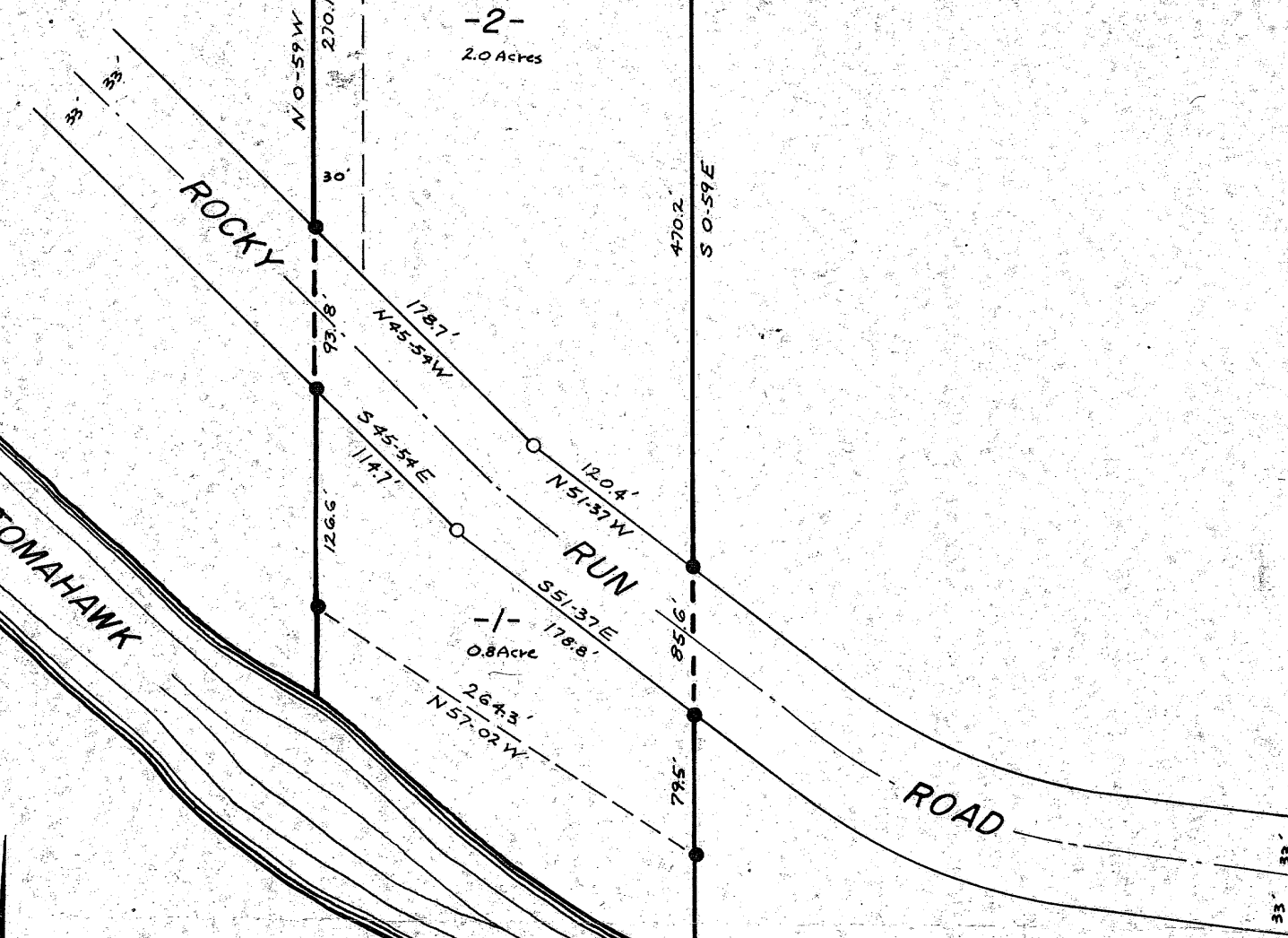
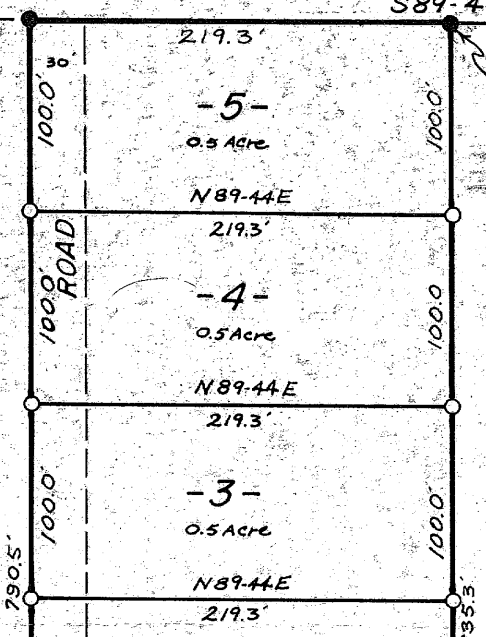
1/8 Corner  
(by others)

A12

RECEIVED & FILED # **A12**  
 Oneida County Surveyor's Office  
 Date **FEB. 10 1980**  
 By **MJM**  
 OCS Area #.....

S89-44W (M<sup>c</sup>NOWN) 660.0' (M<sup>c</sup>NOWN)

Northeast corner of parcel of land recorded in Vol. 295 Deeds, Pg. 204, as established by E.H. Mc NOWN, L.S. # 760, in May, 1969.



N 0° 56' W (M<sup>c</sup>NOWN) 1363.1' (M<sup>c</sup>NOWN)

Part of

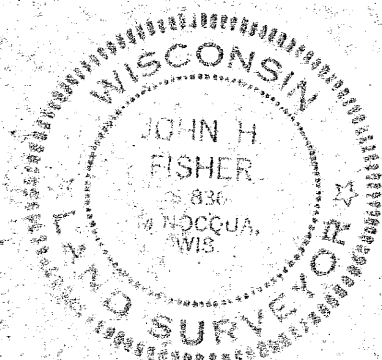
# GOV'T. LOT 2 SECTION 17, T37N, R6E

Oneida County, Wis.

● = Iron pipe found in place  
○ = Iron pipe set



Scale 1" = 100'  
June, 1970



Northwoods Surveyors Inc.  
*John H. Fisher*  
Land Surveyor

A12