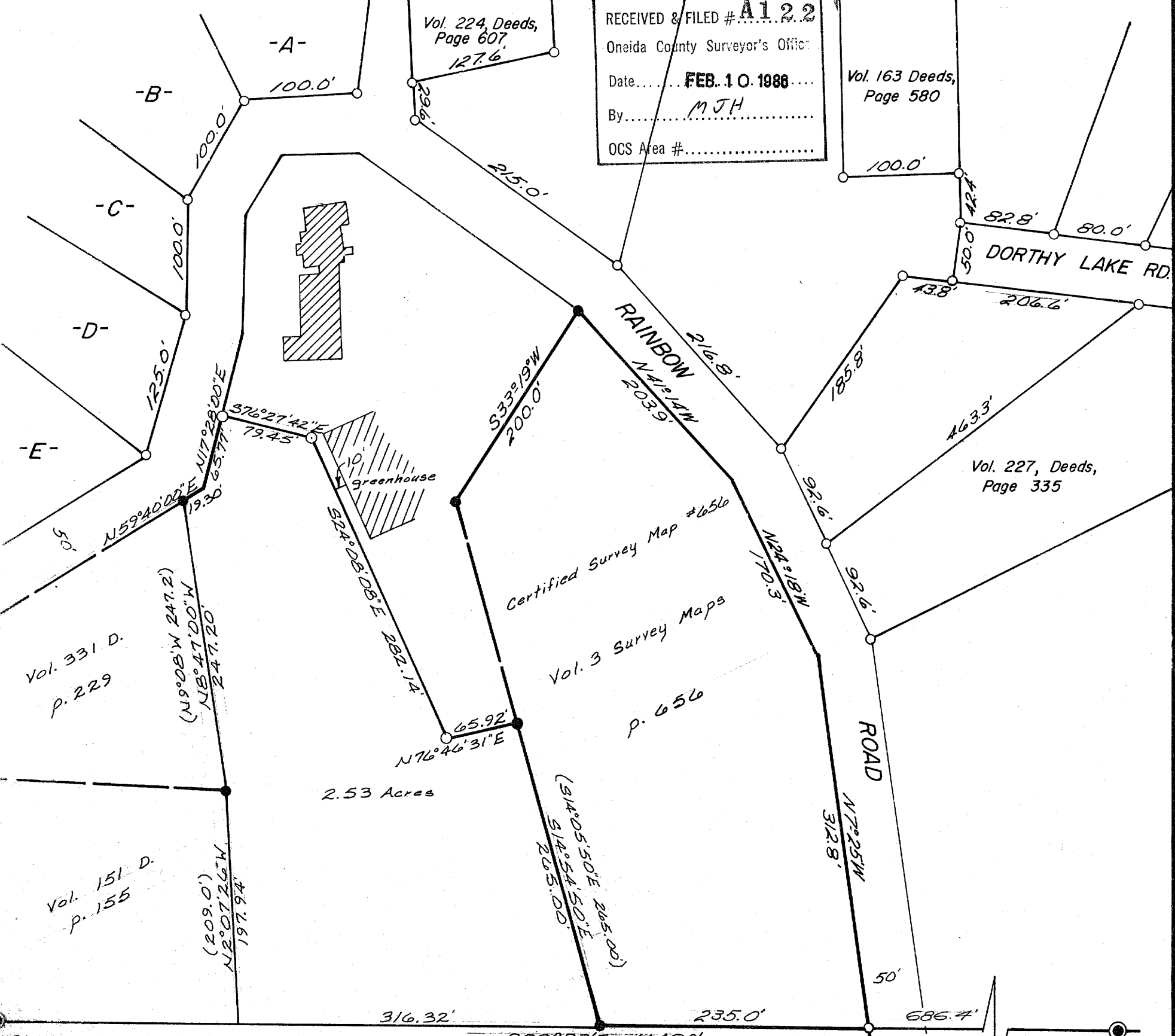


Vol. 224, Deeds,  
Page 607  
127.6'

RECEIVED & FILED # **A122**  
Oneida County Surveyor's Office  
Date..... **FEB. 10. 1988**.....  
By..... **MJH**.....  
OCS Area #.....

Vol. 163 Deeds,  
Page 580



Vol. 331 D.  
P. 229

Vol. 151 D.  
P. 155

2.53 Acres

Certified Survey Map #656  
Vol. 3 Survey Maps  
P. 656

Vol. 227, Deeds,  
Page 335

Corner  
da Co. Cap  
1" Maple  
579'E, 21.0'  
15' N. Pine  
43' N, 37.4'

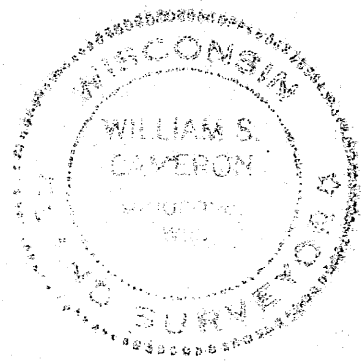
Meander Corner  
W.C.D. Brass Cap  
18" Oak, S6°W, 3.0'  
9" Oak, N50°E, 6.0'

Part of  
**GOV'T. LOT 4**  
**SECTION 2, T38N, R7E**  
Oneida County, Wis.

Scale 1" = 100'

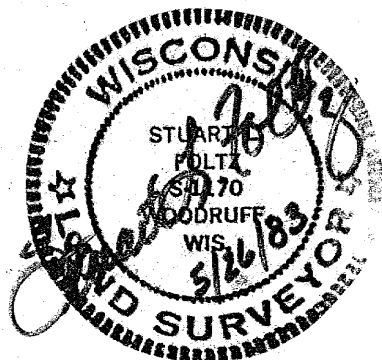
January, 1970  
Revised:  
May, 1971  
May 26, 1983

A1221



Northwoods Surveyors, Inc.

*William S. Cameron*  
Land Surveyor



J. Loasch