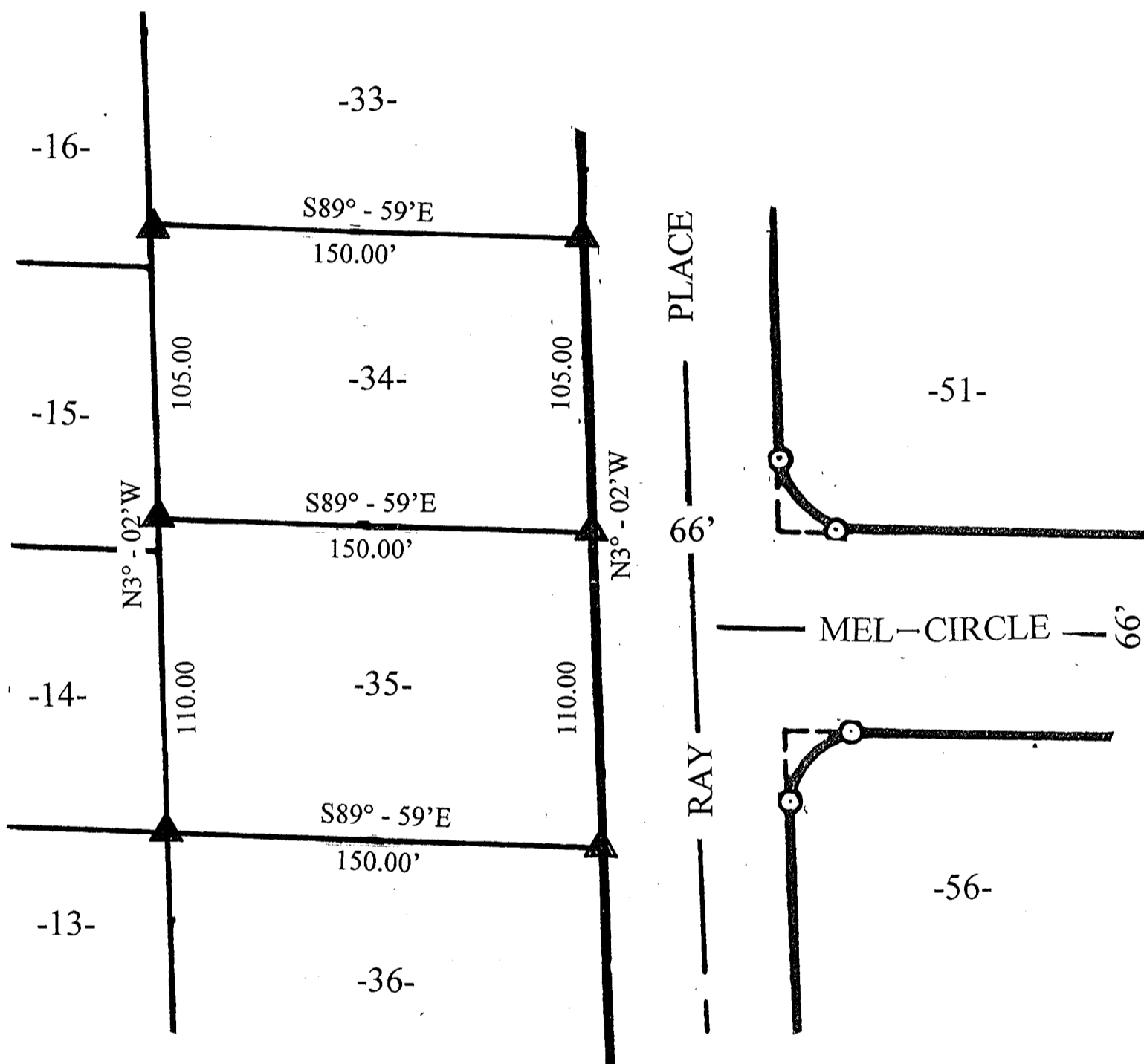


A 1220

A 1220

Lots 34 and 35
of
Lakeland Heights
in the
NE¹/₄ of the NE¹/₄
Section 10, T39N, R6E
Town of Minocqua
Oneida County, Wisconsin



Scale: 1" = 200'

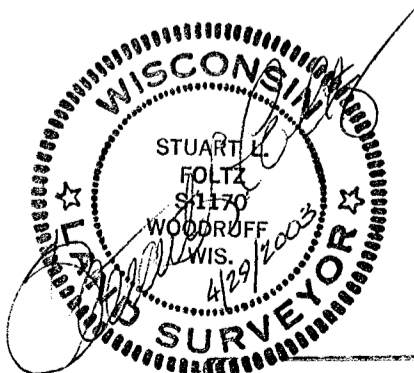
Bearings and distances shown are from the recorded plat of Lakeland Heights dated November 27, 1968

April 29, 2003

Recovered, verified, and marked monuments at the corners of Lots 34 and 35, as follows:

▲ = Iron monument found in place

This survey was completed by Foltz and Associates, Inc. for the purpose of locating existing lot corners by the order of Mark Millen, who has executed a written waiver for all other requirements of Wis. Adm. Code Chap. A-E 7. A closed traverse was not made and the minimum accuracy is 1 part in 100 and plus or minus 2°.



MAP # **A 1220**
APR 30 2003
DATE FILED.....
BY.....
DESCRIPTION FILED.....
ONEIDA CO. SURVEYOR'S OFFICE

Foltz and Associates, Inc.

Surveyors	Engineers
8612 Highway 51 North, Minocqua, Wisconsin 54548	
(715) 356-9485	fax (715) 356-1841

A 1220

A 1220