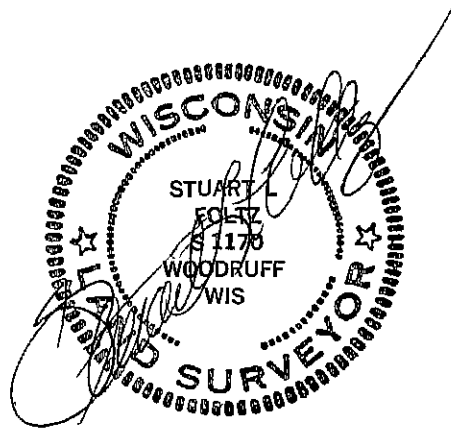
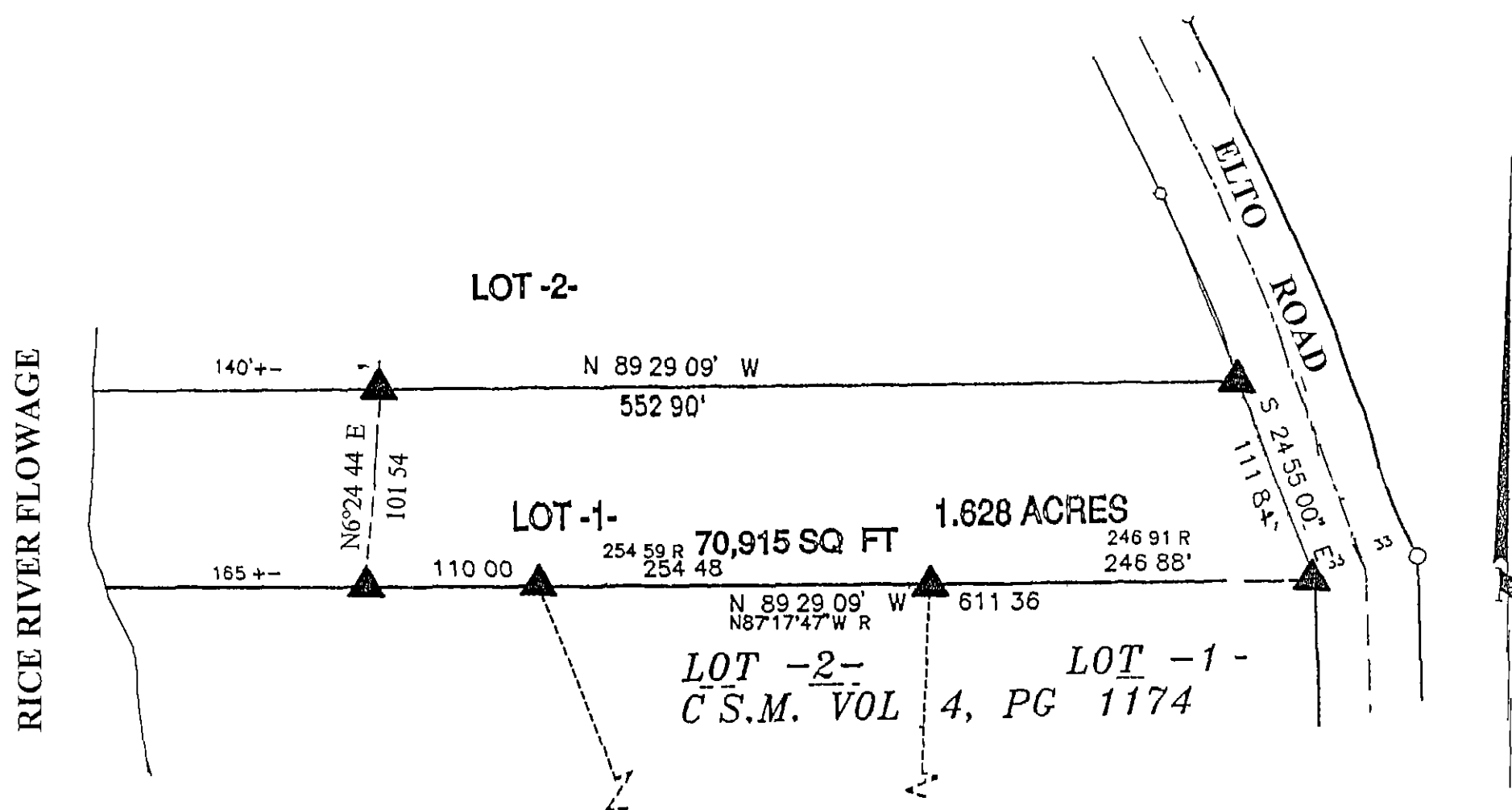


**Lot 1**  
of  
**The County Plat of**  
**Blue Heron Shores**  
in the  
**SE<sup>1</sup>/<sub>4</sub> of the NW<sup>1</sup>/<sub>4</sub>**  
and the  
**SW<sup>1</sup>/<sub>4</sub> of the NW<sup>1</sup>/<sub>4</sub>**  
**Section 32, T36N, R6E**  
Town of Nokomis  
Oneida County, Wisconsin



Bearings and distances shown are from The County Plat of Blue Heron Shores dated June 18, 1996

Scale 1" = 100'

May 28, 2003

Recovered, verified, and marked monuments at the corners of Lot 1 of Blue Heron Shores, as follows

▲ = Iron monument found in place

This survey was completed by Foltz and Associates, Inc for the purpose of locating existing lot corners by the order of Marty Noe, who has executed a written waiver for all other requirements of Wis Adm Code Chap A E 7. A closed traverse was not made and the minimum accuracy is 1 part in 100 and plus or minus 2°

MAP #	<b>A 1235</b>
DATE FILED	
BY	
DESCRIPTION FILED	
ONEIDA CO SURVEYOR'S OFFICE	

**Foltz and Associates, Inc**

Surveyors	Engineers
8612 Highway 51 North	Milwaukee Wisconsin 54548
(715) 356-9485	fax (715) 356-1841