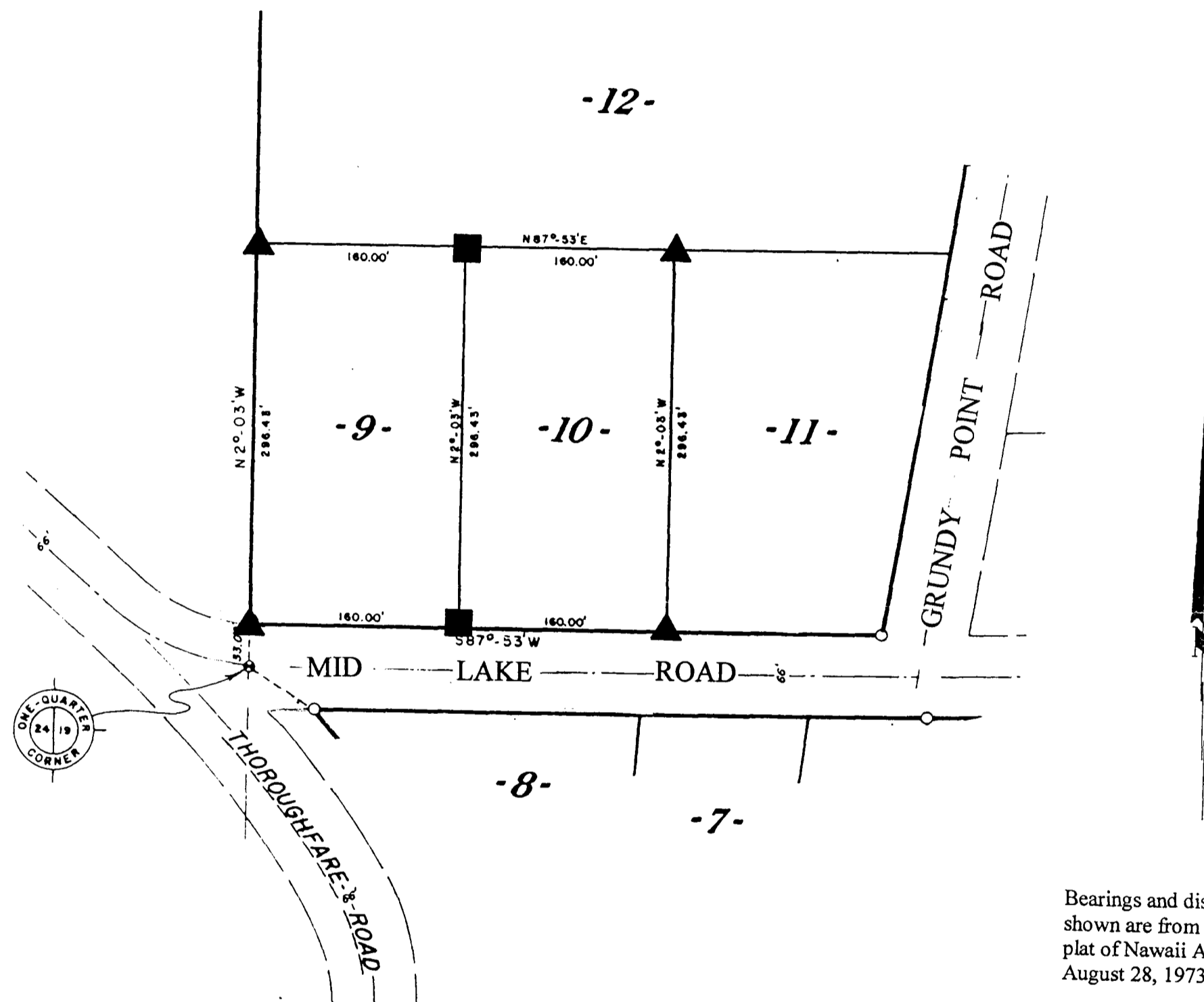


Lots 9 and 10
 of
Nawaii Acres
 in
Gov't Lot 5
Section 19, T39N, R7E
 Town of Woodruff
 Oneida County, Wisconsin



Bearings and distances shown are from the recorded plat of Nawaii Acres dated August 28, 1973

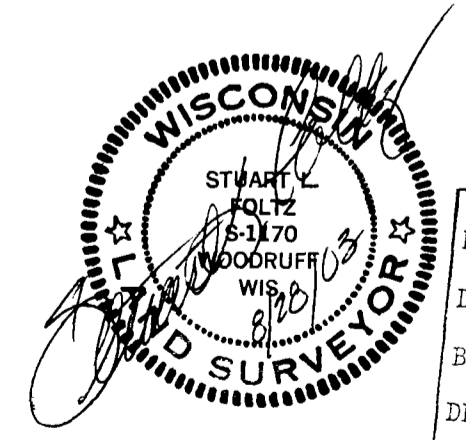
Scale: 1" = 100'

August 28, 2003

Recovered, verified, and marked monuments at the corner of Lots 9 and 10, as follows:

- ▲ = Iron monument found in place
- = Corner out, set lath stake at approximate location

This survey was completed by Foltz and Associates, Inc. for the purpose of locating existing lot corners by the order of Veronica Richwalsky, who has executed a written waiver for all other requirements of Wis. Adm. Code Chap. A-E 7. A closed traverse was not made and the minimum accuracy is 1 part in 100 and plus or minus 2".



MAP # **A 1255**
 DATE FILED **SEP 28 2003**
 BY *[Signature]*
 DESCRIPTION FILED
 ONEIDA CO. SURVEYOR'S OFFICE

Foltz and Associates, Inc.
 Surveyors Engineers
 8612 Highway 51 North, Minocqua, Wisconsin 54548
 (715) 356-9485 fax (715) 356-1841