

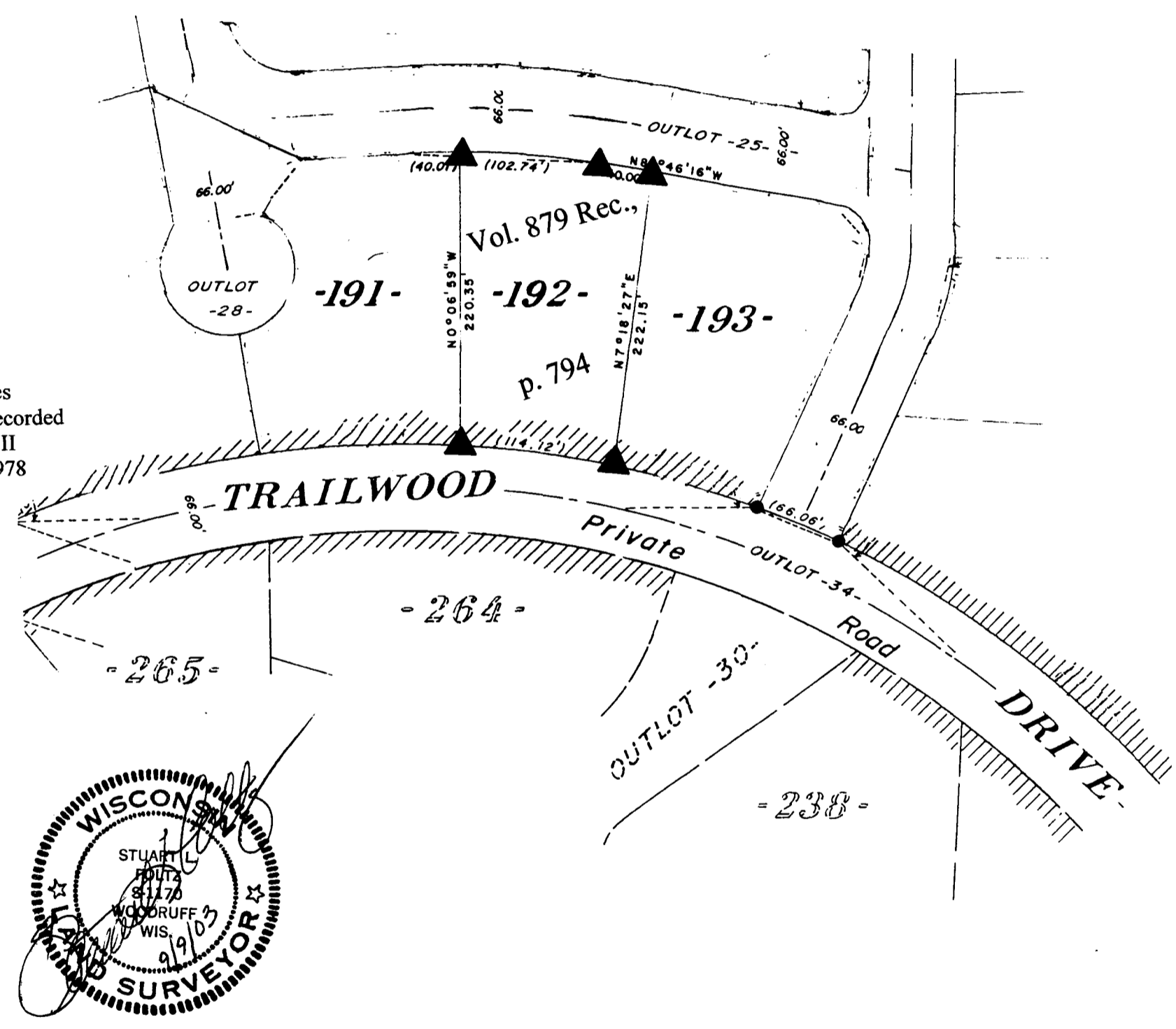
A 1256

A 1256

Lot 192
of
Timber Ridge II
in the
NW¹/₄ of the SW¹/₄
Section 34, T39N, R6E
Town of Minocqua
Oneida County, Wisconsin

Bearings and distances shown are from the recorded plat of Timber Ridge II dated February 23, 1978

Scale: 1" = 100'



September 9, 2003

Recovered, verified, and marked monuments at the corners of Lot 192 of Timber Ridge II, as follows:

▲ = Iron monument found in place

This survey was completed by Foltz and Associates, Inc. for the purpose of locating existing lot corners by the order of Attorney John Danner, who has executed a written waiver for all other requirements of Wis. Adm. Code Chap. A-E 7. A closed traverse was not made and the minimum accuracy is 1 part in 100 and plus or minus 2".

MAP # **A 1256**
DATE FILED **SEP 26 2003**
BY *[Signature]*
DESCRIPTION FILED
ONEIDA CO. SURVEYOR'S OFFICE

Foltz and Associates, Inc.
Surveyors Engineers
8612 Highway 51 North, Minocqua, Wisconsin 54548
(715) 356-9485 fax (715) 356-1841

256

A 1256

A 1256