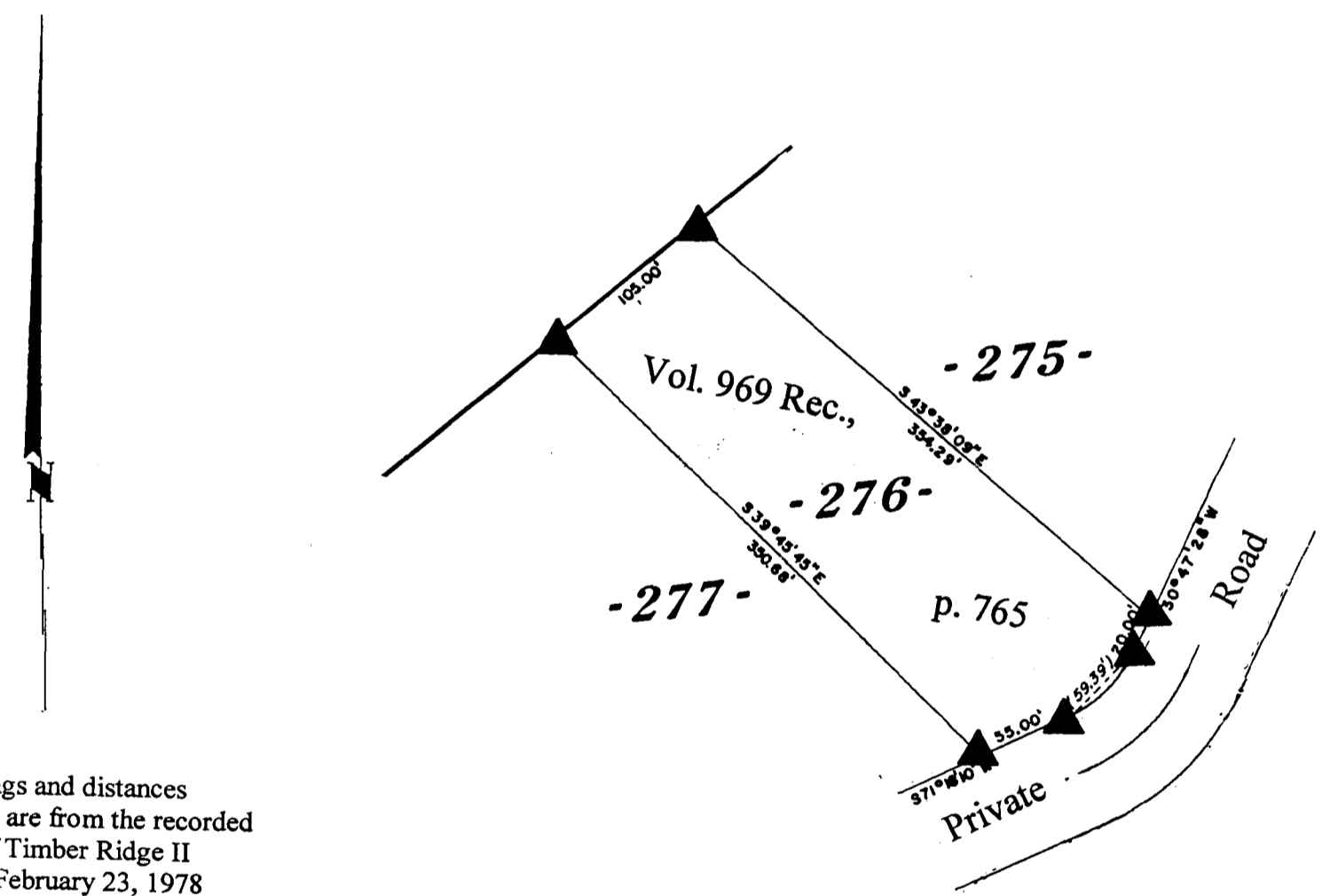


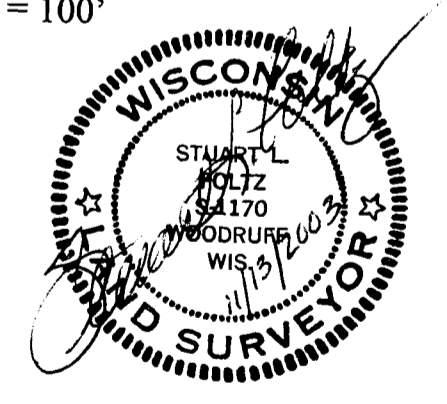
**Lot 276**  
of  
**Timber Ridge II**  
in the  
**SE<sup>1</sup>/<sub>4</sub> of the SE<sup>1</sup>/<sub>4</sub>**  
**Section 33,**  
and the  
**SW<sup>1</sup>/<sub>4</sub> of the SW<sup>1</sup>/<sub>4</sub>,**  
**Section 34, T39N, R6E**  
Town of Minocqua  
Oneida County, Wisconsin

MAP # **A 1 2 7 1**  
DATE FILED **DEC 05 2003**  
BY *P.A.P.*  
DESCRIPTION FILED  
ONEIDA CO. SURVEYOR'S OFFICE



Bearings and distances shown are from the recorded plat of Timber Ridge II dated February 23, 1978

Scale: 1" = 100'



November 13, 2003

Recovered, verified, and marked monuments at the corners of Lot 276 of Timber Ridge II, as follows:

▲ = Iron monument found in place

This survey was completed by Foltz and Associates, Inc. for the purpose of locating existing lot corners by the order of Don Dixon, who has executed a written waiver for all other requirements of Wis. Adm. Code Chap. A-E 7. A closed traverse was not made and the minimum accuracy is 1 part in 100 and plus or minus 2°.

**Foltz and Associates, Inc.**  
Surveyors                      Engineers  
8612 Highway 51 North, Minocqua, Wisconsin 54548  
(715) 356-9485                      fax (715) 356-1841