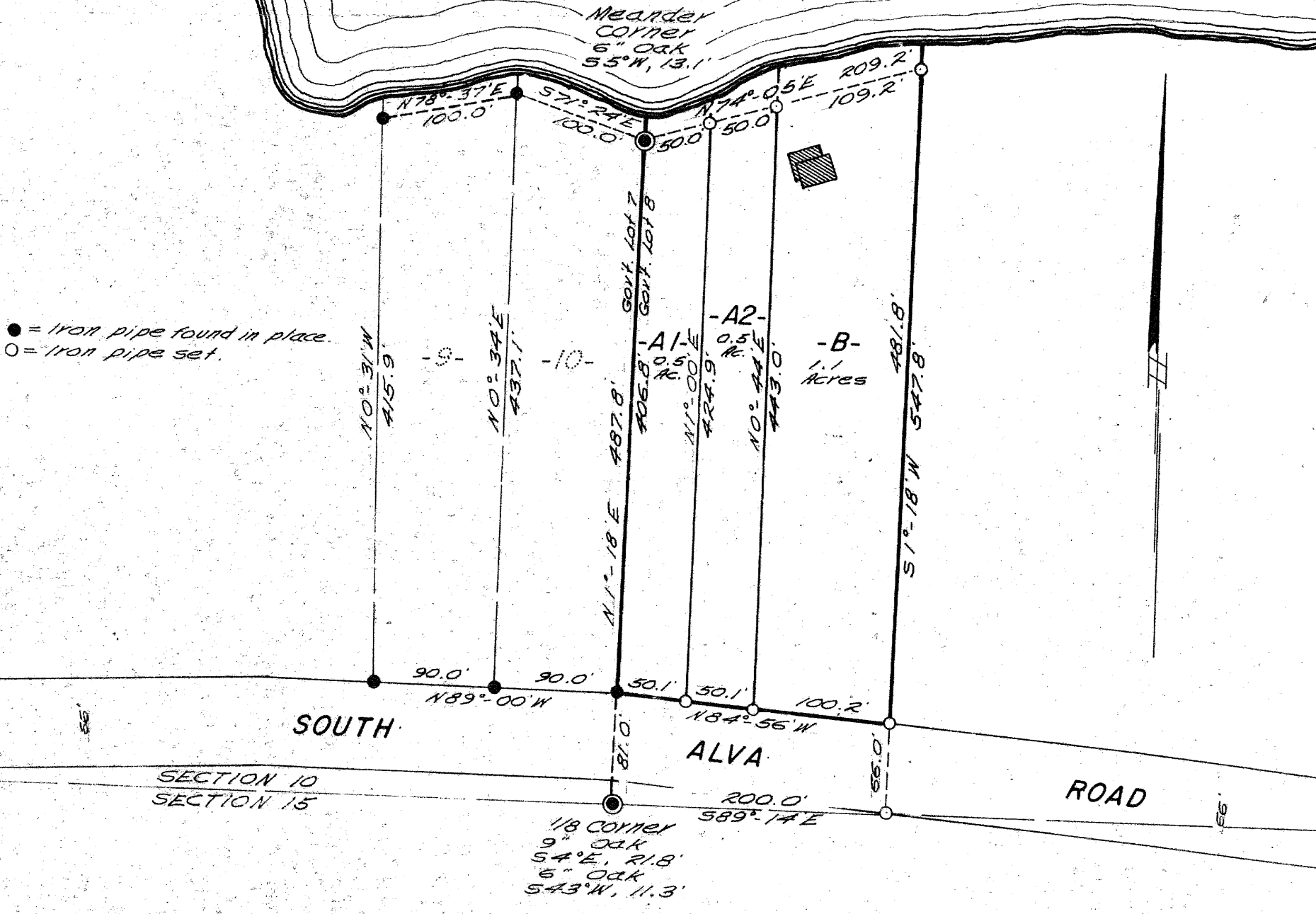
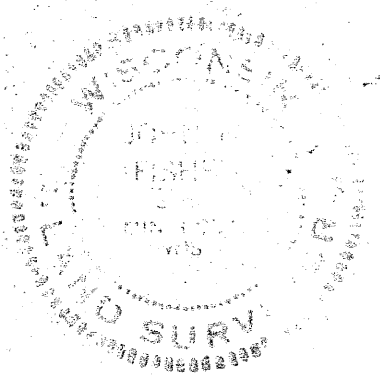


RECEIVED & FILED # **A13**  
 Oneida County Surveyor's Office  
 Date **FEB. 10. 1986**  
 By **M J H**  
 OCS Area #.....

ALVA LAKE



Part of  
**GOV'T. LOTS 7 & 8**  
**SECTION 10, T37N, R7E**  
 Oneida County, Wis.



Scale 1" = 100'  
 July, 1970

Northwoods Surveyors Inc.  
*John H. Lisher*  
 Land Surveyor