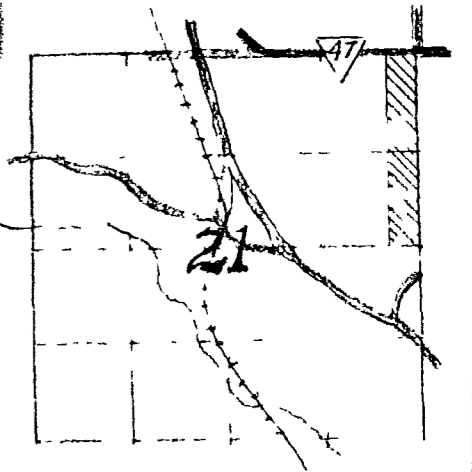


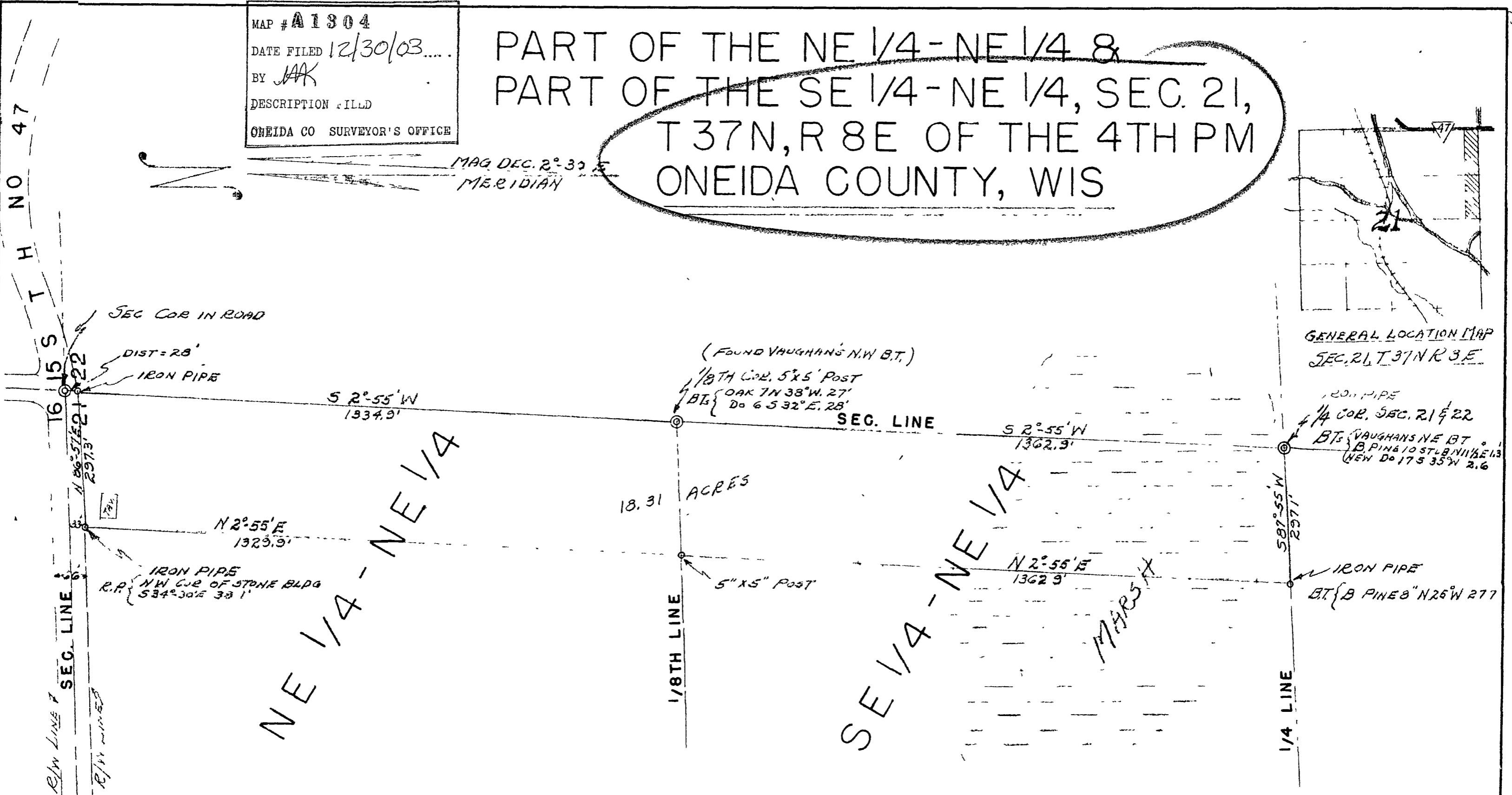
MAP # **A1304**
 DATE FILED *12/30/03*
 BY *JAK*
 DESCRIPTION *ILLD*
 ONEIDA CO SURVEYOR'S OFFICE

PART OF THE NE 1/4 - NE 1/4 &
 PART OF THE SE 1/4 - NE 1/4, SEC. 21,
 T37N, R8E OF THE 4TH PM
 ONEIDA COUNTY, WIS

MAG DEC. 2° 32' E
 MERIDIAN



GENERAL LOCATION MAP
 SEC. 21, T37N, R8E



These lines are references to the original plat and are not to be used for any other purpose.



21	SURVEY FOR KENNETH FOSS RHINELANDER, WIS	
	MAY 21, 1949 SCALE 1" = 200'	
DWG. NO. 548-1	GENISOT ENGINEERING CO. RHINELANDER, WIS	