



12" N Pine
N 65° W 21.8
16" Pine stump
N 68° W, 12.5

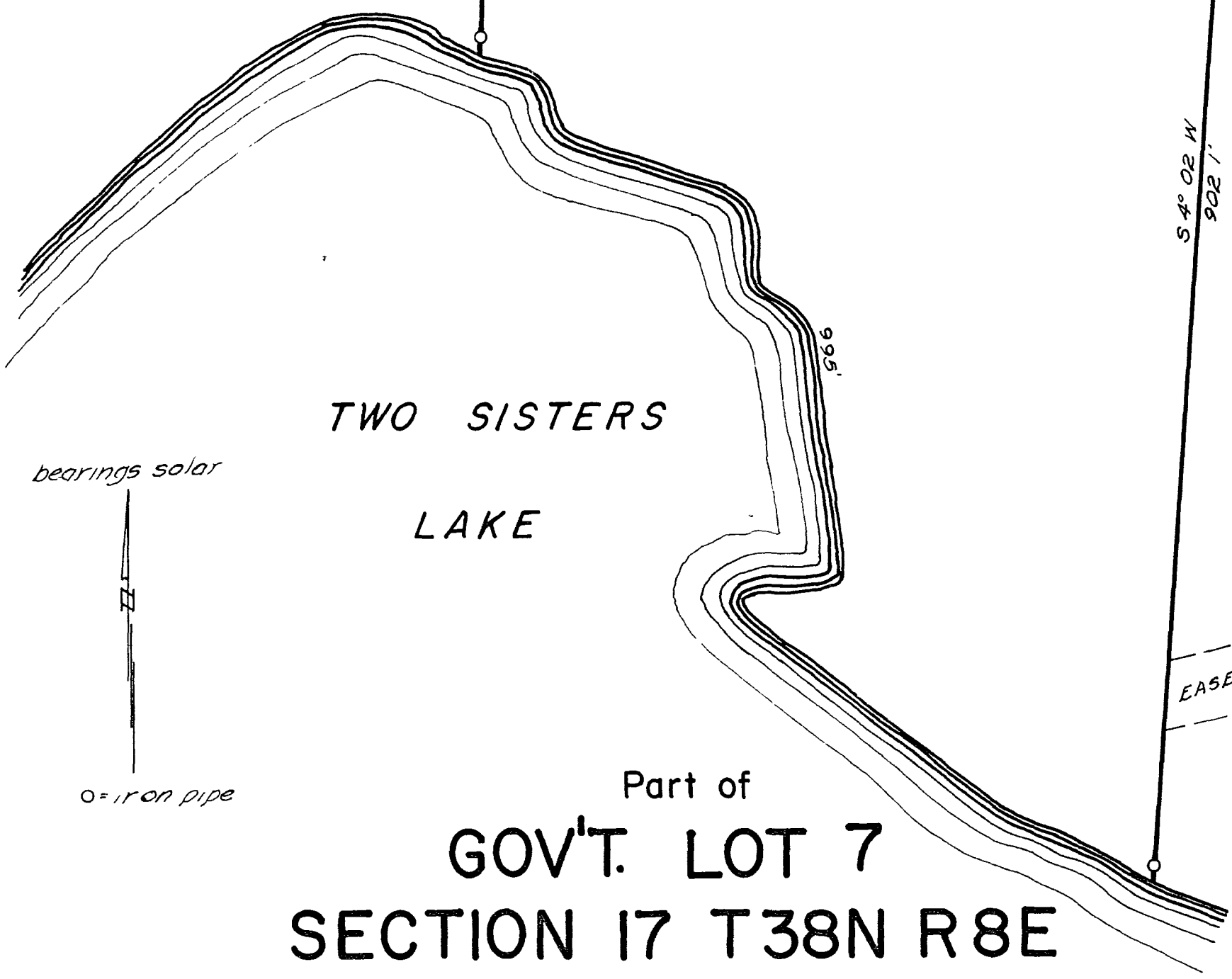
322.5' S 89°-52' E 538.0' One-quarter line

MAP # A1313
DATE FILED 12/30/03
BY...
DESCRIPTION FILED
ONEIDA CO SURVEYOR'S OFFICE

SOUTH 1016.5'

N 0°-57' E
1310.7'

200 Acres



TWO SISTERS
LAKE

bearings solar



o = iron pipe

EASEMENT ROAD 50'

Part of
GOV'T. LOT 7
SECTION 17 T38N R8E
Oneida County, Wis

Scale 1"=100'

March, 1967

Northwoods Surveyors

Land Surveyor

J Fisher

S17 T38 R8 P+G L7

A1313