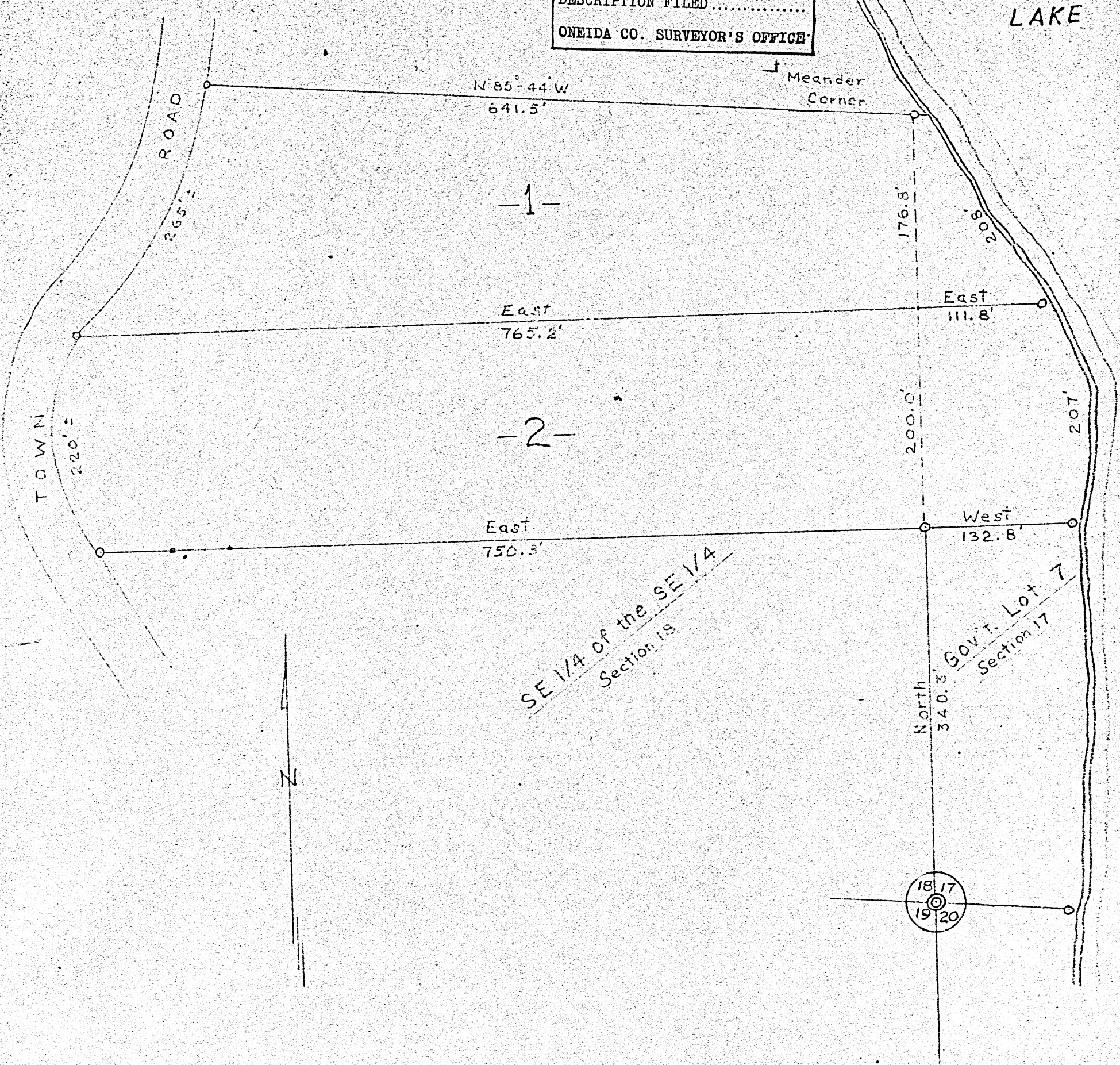


MAP # **A1314**
 DATE FILED 12/30/03
 BY AK
 DESCRIPTION FILED
 ONEIDA CO. SURVEYOR'S OFFICE

TWO SISTERS LAKE



Part of Sections 18 & 17
 T38 N, R8 E
 ONEIDA COUNTY, WIS.

August, 1958
 Scale: 1" = 100'



Northwoods Surveyors
William S. Cameron
 reg. surveyor

16-18-368

J. Griffin

S18+17, T38, R8 SESE