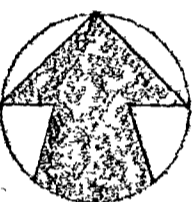
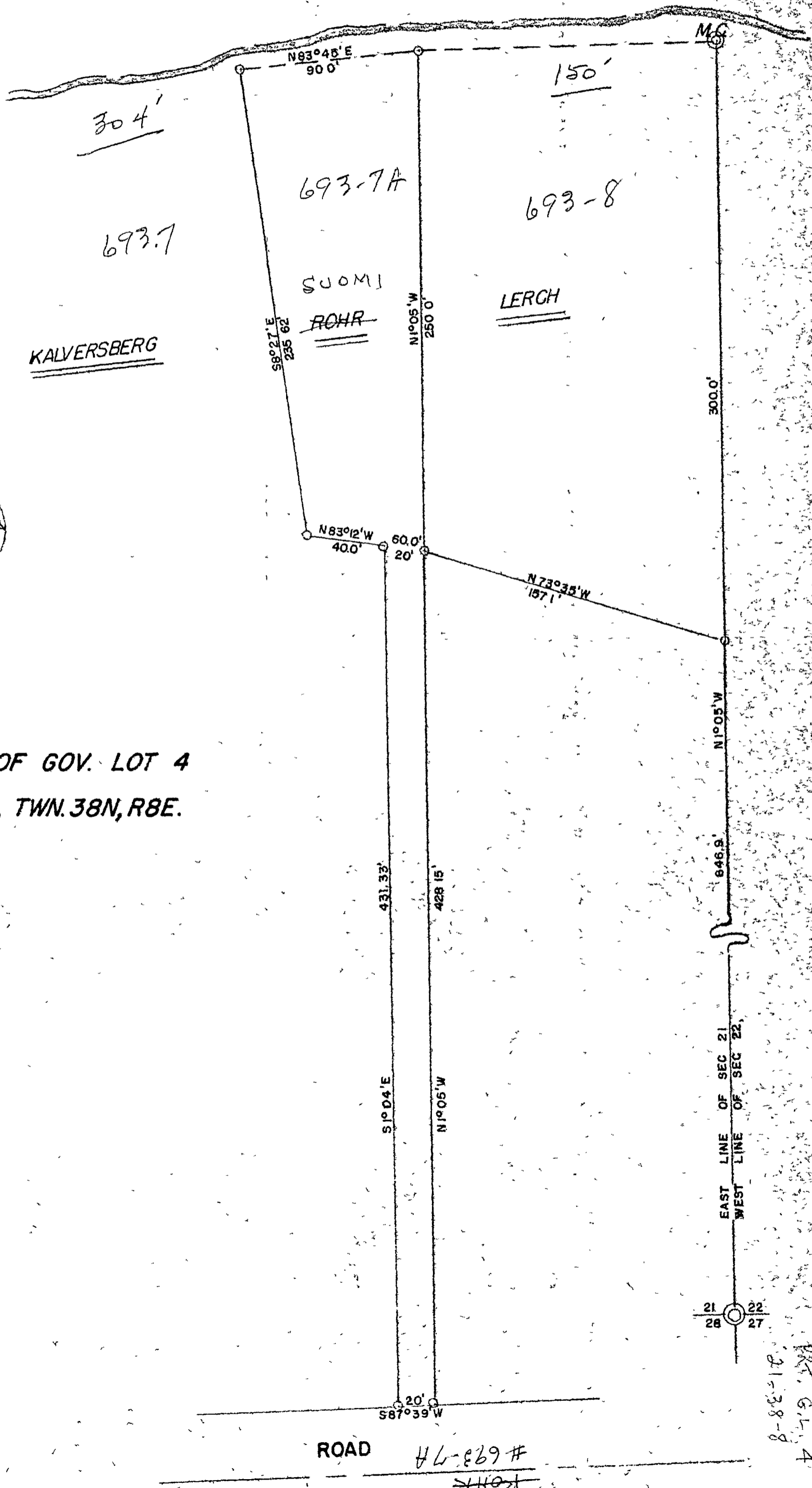


MAP # **A1319**
 DATE FILED **12/30/03**
 BY **MAK**
 DESCRIPTION TYPED
 ONEIDA CO SURVEYOR'S OFFICE

TOM DOYLE LAKE



PART OF GOV. LOT 4
 SEC. 21, TWN. 38N, R8E.

REVISIONS			DRAWN BY		SCALE		DATE		MATERIAL	
NO	DATE	BY								
1			HENRY ROHR		1" = 50'		14 JULY 62		DRAWING NO 3048	
2			MILWAUKEE, WIS.							
3			SURVEY FOR							
4			1001 EAST KEFFE							
5			TRACED							