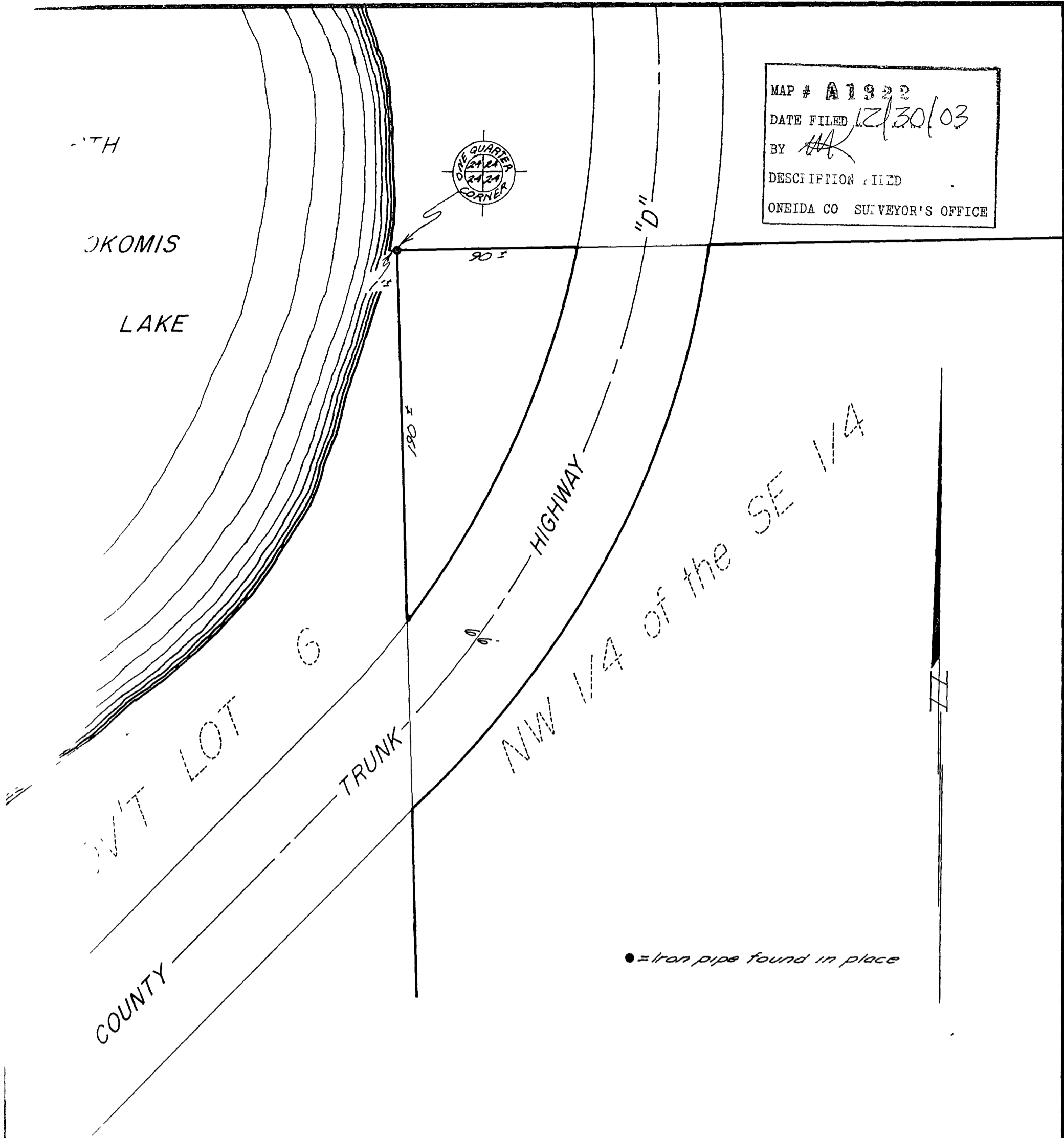
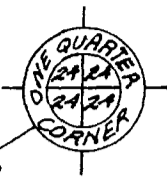


MAP # A1322  
 DATE FILED 12/30/03  
 BY *AK*  
 DESCRIPTION FILED  
 ONEIDA CO SURVEYOR'S OFFICE



Part of the  
 NW 1/4 of the SE 1/4  
 and part of  
 GOV'T LOT 6  
 SECTION 24, T 39N, R 8E  
 Oneida County, Wis

Scale 1"=50'

June, 1971

Northwoods Surveyors Inc

*William D Cameron*  
 Land Surveyor

524-39-C Pt NW 1/4 of SE 1/4