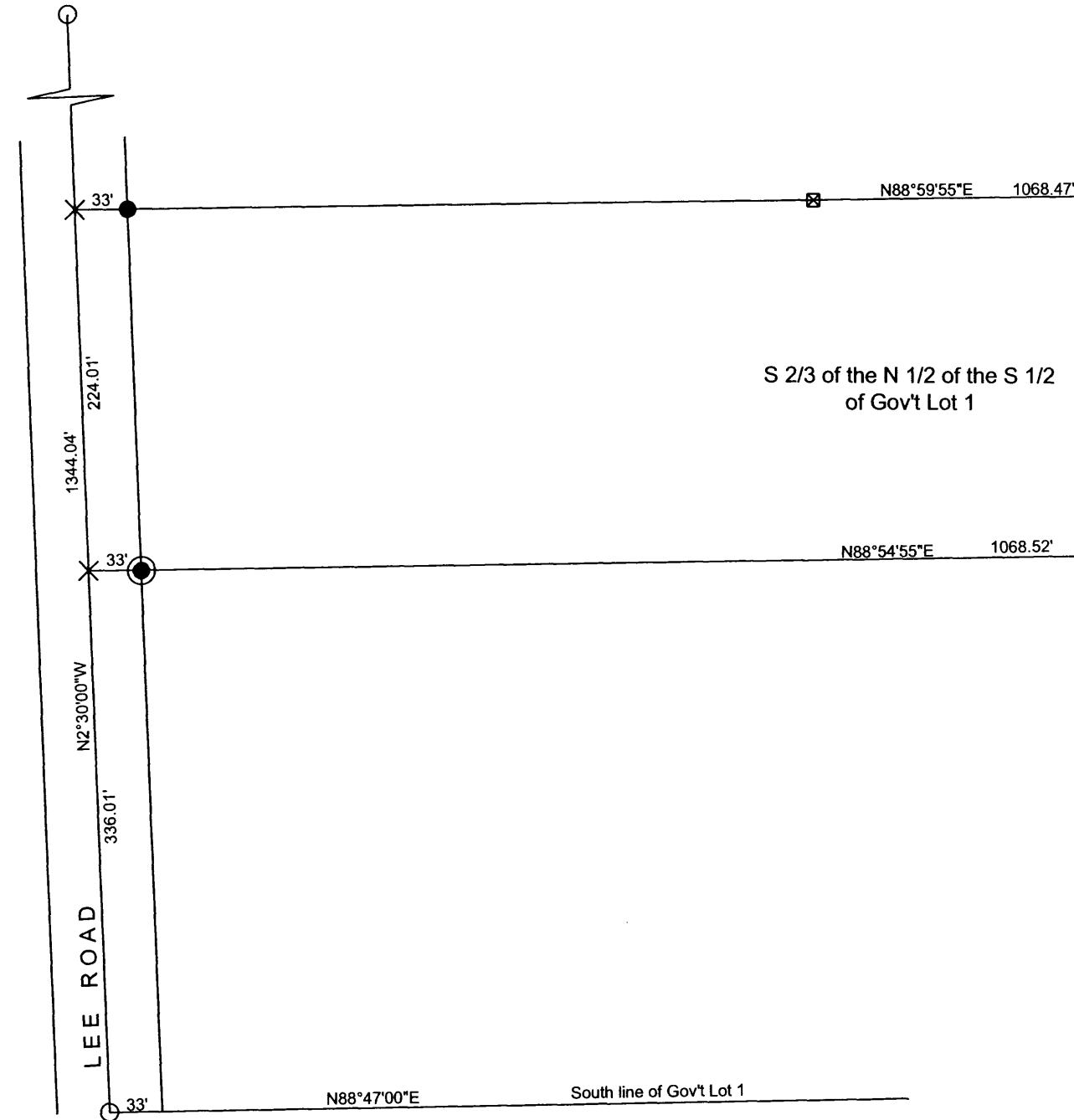


A 1366

A 1366

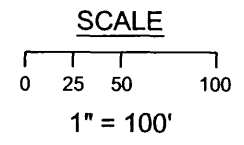
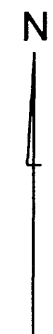
NW Corner
Gov't Lot 1
Sec 17-36-6



S 2/3 of the N 1/2 of the S 1/2
of Gov't Lot 1

Prairie

Lake



- IP found
- 1" IP - Set
- ⊙ 1 1/2" IP - Set
- × PK nail Set
- ⊠ Wood Hub Set

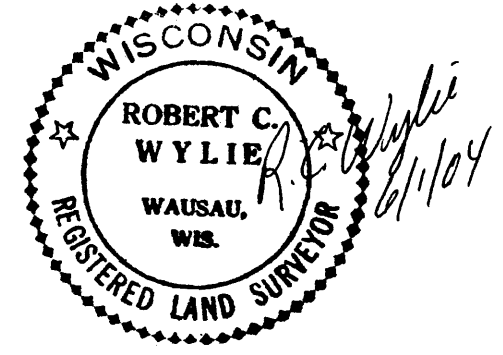
NOTE: Bearing datum adapted
from Genisot Engr. Co survey
Map No. 3120, dated 10/4/62

I hereby certify that this survey was performed
in accordance with acceptable professional standards;
that the data shown hereon is, to the best of my
knowledge, information and belief, a true and
accurate representation thereof; and that this
survey was performed by order of Robert W. Gall.

South 1/4 Corner
Sec 17-36-6

Map of Survey
of
Part of Government Lot 1
Section 17, T36N, R6E
Town of Nokomis
Oneida County, Wisconsin

MAP # **A 1366**
 DATE FILED **JUN 10 2004**
 BY *RP*
 DESCRIPTION FILED
 ONEIDA CO. SURVEYOR'S OFFICE



A 1366

A 1366