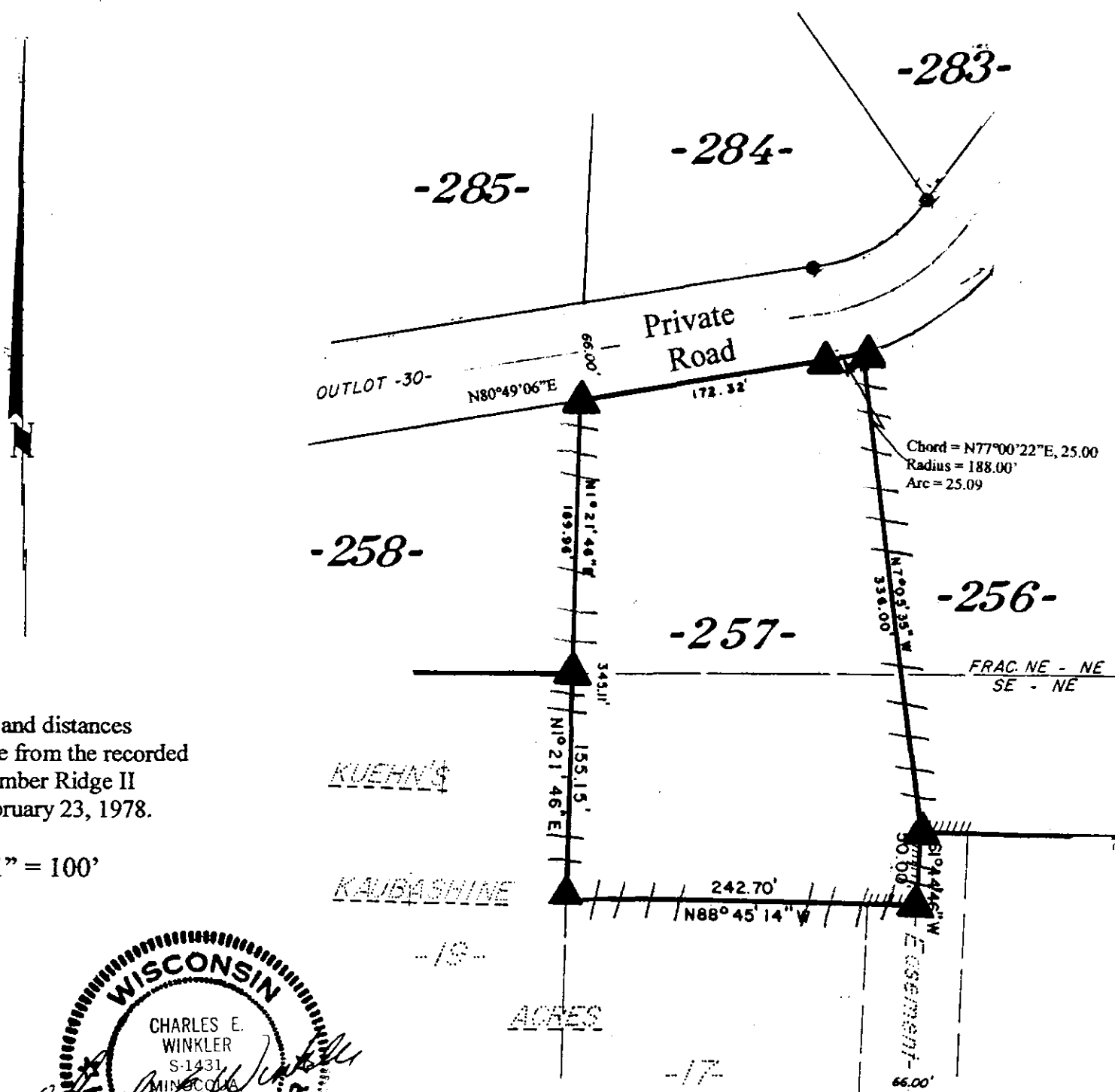
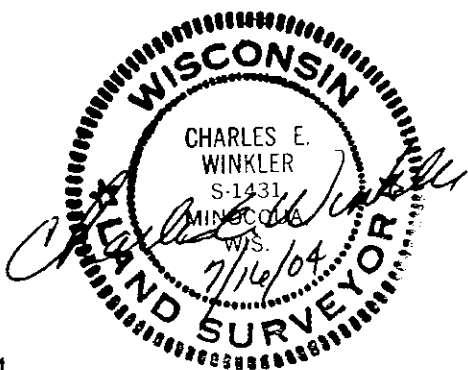


**Lot 257**  
 of  
**Timber Ridge II**  
 in the  
**Frac. NE<sup>1</sup>/<sub>4</sub> of the NE<sup>1</sup>/<sub>4</sub>,**  
 and in the  
**SE<sup>1</sup>/<sub>4</sub> of the NE<sup>1</sup>/<sub>4</sub>**  
**Section 4, T38N, R6E**  
 Town of Hazelhurst  
 Oneida County, Wisconsin



Bearings and distances shown are from the recorded plat of Timber Ridge II dated February 23, 1978.

Scale: 1" = 100'



July 16, 2004

Recovered, verified, and marked the corners and approximate lot lines of Lot 257, as follows:

- ▲ = Iron monument found in place
- ||| = Lot lines marked with surveyor's flagging ribbon

This survey was completed by Foltz and Associates, Inc. for the purpose of locating existing lot corners and flagging approximate lot lines by the order of Richard Biller, who has executed a written waiver for all other requirements of Wis. Adm. Code Chap. A-E 7. A closed traverse was not made and the minimum accuracy is 1 part in 100 and plus or minus 2°.

MAP #	<b>A1408</b>
DATE FILED	<b>SEP 23 2004</b>
BY	<i>MBK</i>
DESCRIPTION FILED	.....
ONEIDA CO. SURVEYOR'S OFFICE	

**Foltz and Associates, Inc.**

Surveyors	Engineers
8612 Highway 51 North, Minocqua, Wisconsin 54548	
(715) 356-9485	fax (715) 356-1841