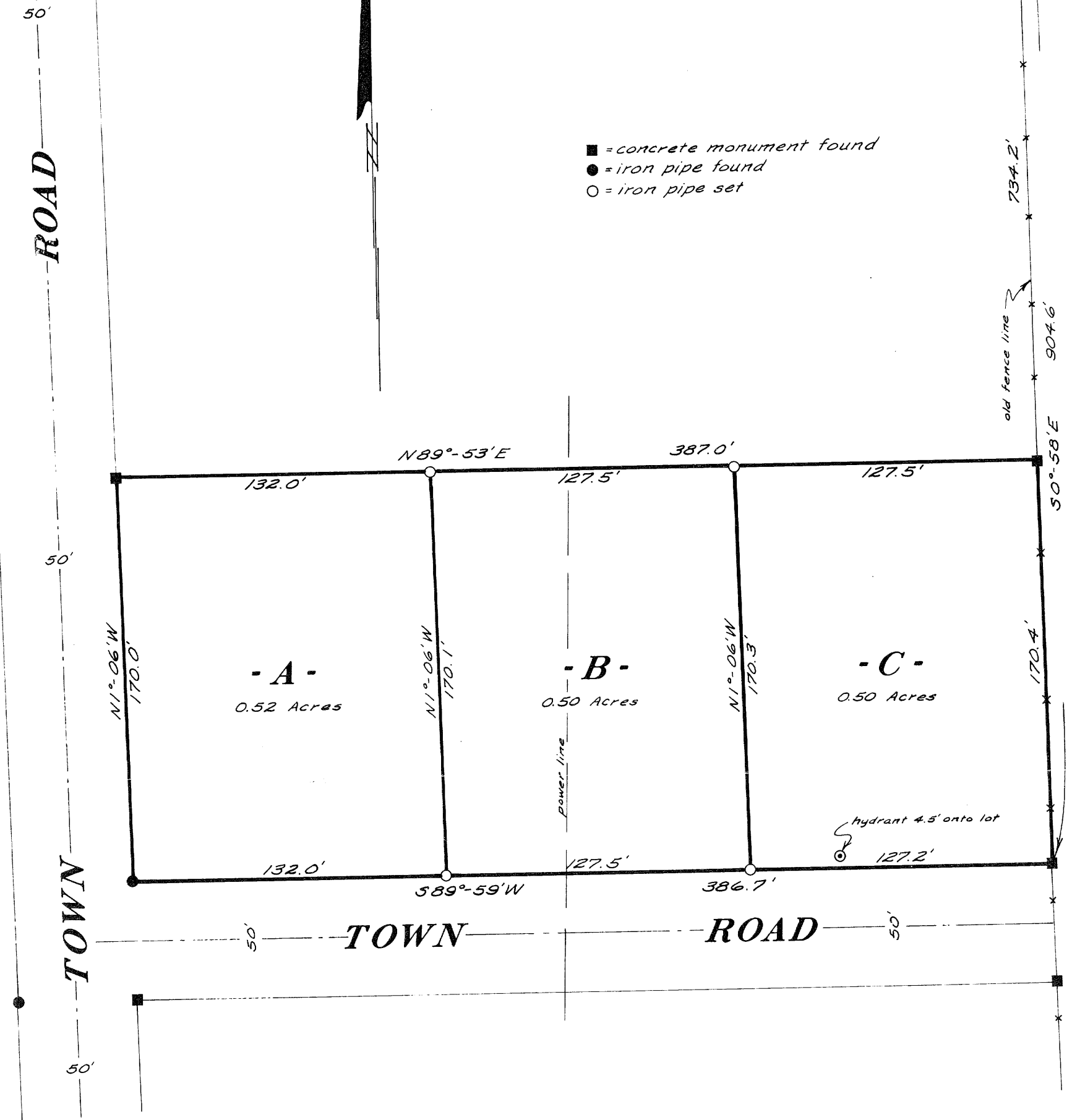


RECEIVED & FILED # **A141**
 Oneida County Surveyor's Office
FEB. 10 1988
 Date.....
 By *MJH*
 OCS Area #.....

1/8 Corner (by others)
 16" Oak N3°E 44.1'

bearings magnetic

- = concrete monument found
- = iron pipe found
- = iron pipe set



Part of the
NW 1/4 of the NE 1/4
SECTION II, T39N, R6E
 Oneida County, Wis.

The Oneida County Zoning Committee has
 no objections to this plat

Scale 1" = 50'

Date *2/13/73* Northwoods Surveyors Inc.

Signature *John W. Varnum*
 Oneida County Zoning Administrator

December, 1972

William S. Cameron
 Land Surveyor

A141

Dec 4249-257

2-11-396