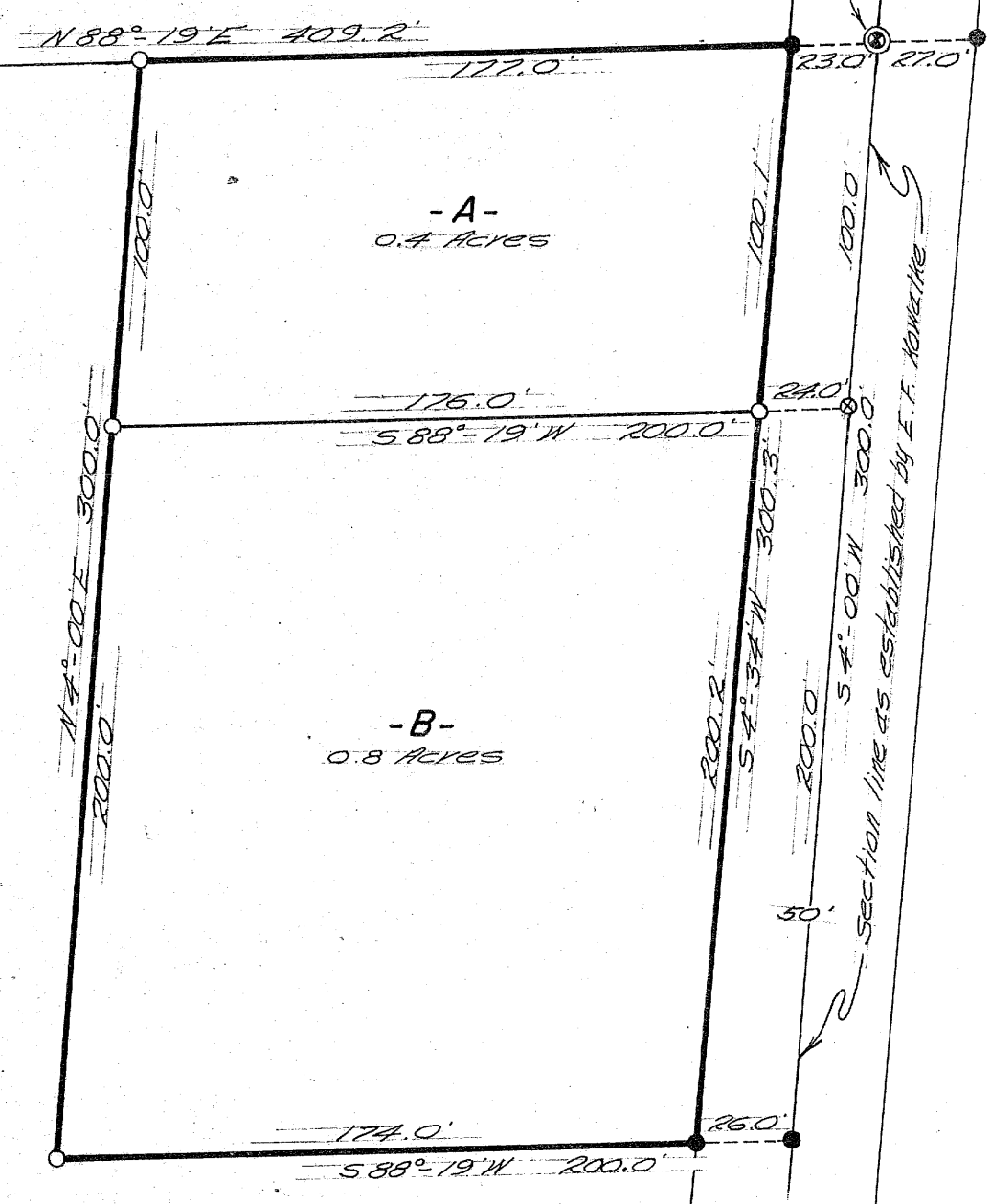


RECEIVED & FILED # **A142**  
 Onida County Surveyor's Office  
 Date... **FEB. 10. 1986** .....  
 By... **M JH** .....  
 OCS Area #.....

**1/8 CORNER**  
 (corner by E. F. Kowalke)  
 16" Oak 584° E, 39.4'

One-Eighth line as established by E. F. Kowalke

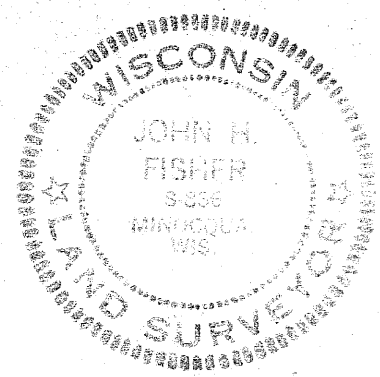
Bearings Magnetic



- ⊗ = Axle shaft found in place.
- = Iron pipe found in place.
- ⊙ = Axle shaft set.
- = Iron pipe set.

Part of the  
**SE 1/4 of the NE 1/4**  
**SECTION 23, T39N, R6E**  
 Oneida County, Wis.

Scale 1" = 50'  
 July, 1970



Northwoods Surveyors Inc.  
*John H. Fisher*  
 Land Surveyor

A142