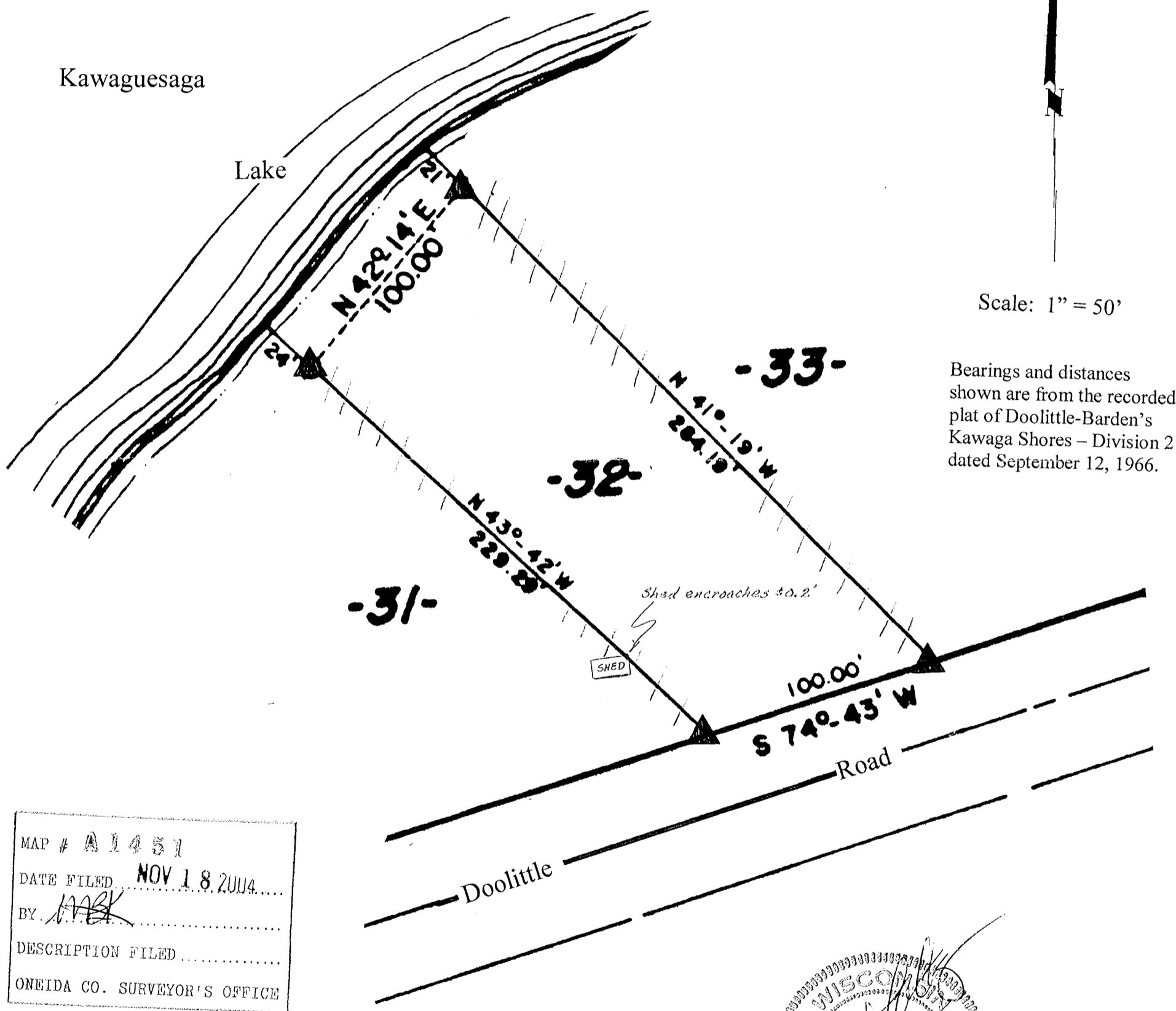


Lot 32
 of
Doolittle – Barden’s
Kawaga Shores – Division 2
 in
Government Lots 9 & 10
Section 15, T39N, R6E
 Town of Minocqua
 Oneida County, Wisconsin



Scale: 1" = 50'

Bearings and distances shown are from the recorded plat of Doolittle-Barden's Kawaga Shores – Division 2 dated September 12, 1966.

MAP # A 1451
 DATE FILED NOV 18 2004
 BY [Signature]
 DESCRIPTION FILED
 ONEIDA CO. SURVEYOR'S OFFICE

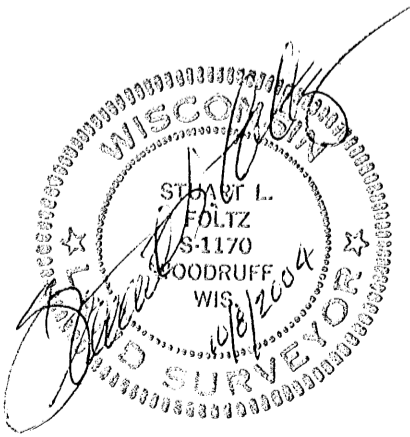
October 8, 2004

Recovered, verified, and marked monuments at the corners of Lot 32 of Doolittle-Barden's Kawaga Shores – Division 2 and marked the approximate lot lines, as follows:

▲ = Iron monument found in place

||| = Lot lines marked with fluorescent surveyor's flagging ribbon

This survey was completed by Foltz and Associates, Inc. for the purpose of locating existing lot corners and flagging approximate lot lines by the order of Roger M. Rose, who has executed a written waiver for all other requirements of Wis. Adm. Code Chap. A-E 7. A closed traverse was not made and the minimum accuracy is 1 part in 100 and plus or minus 2°.



Foltz and Associates, Inc.

Surveyors Engineers
 8612 Highway 51 North, Minocqua, Wisconsin 54548
 (715) 356-9485 fax (715) 356-1841