

A 1485

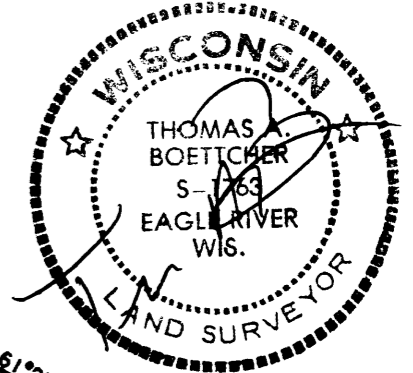
A 1485

Oneida County  
Grid North

MAP # **A 1485**  
 DATE FILED MAY 11, 2005  
 BY *[Signature]*  
 DESCRIPTION FILED  
 ONEIDA CO. SURVEYOR'S OFFICE

Being a Part of  
**Gov't. Lots 6 & 7, Section 16**  
**T 38 N, R 11 E**  
 Town of Three Lakes  
 Oneida County, Wisconsin

SCALE: 1" = 40'  
 0' 10' 25' 50' 100'

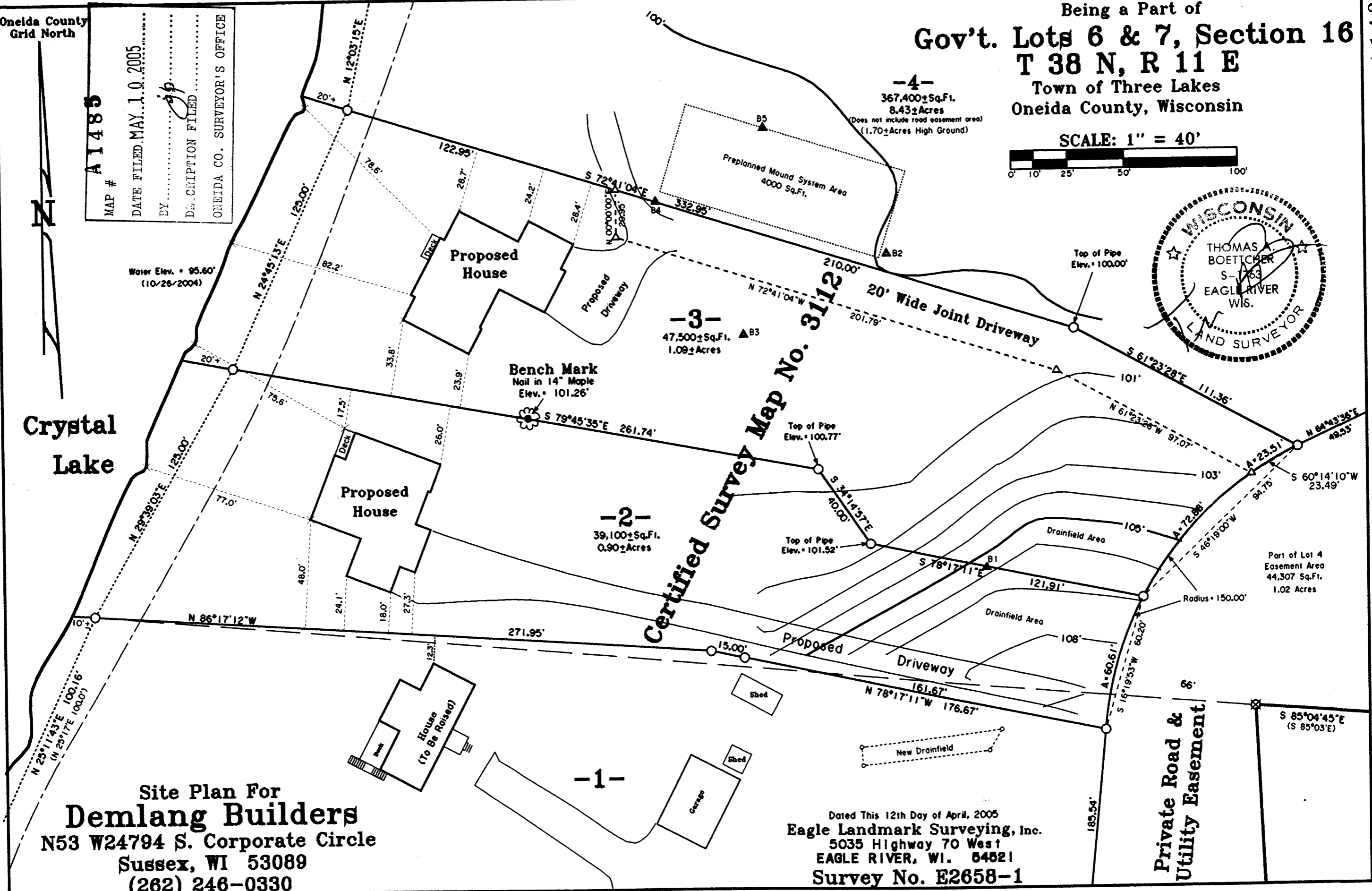


Water Elev. = 95.60'  
 (10/26/2004)

Crystal  
 Lake

Site Plan For  
**Demlang Builders**  
 N53 W24794 S. Corporate Circle  
 Sussex, WI 53089  
 (262) 246-0330

**Certified Survey Map No. 3112**



Dated This 12th Day of April, 2005  
 Eagle Landmark Surveying, Inc.  
 5035 Highway 70 West  
 EAGLE RIVER, WI. 54821  
 Survey No. E2658-1

A 1485

A 1485