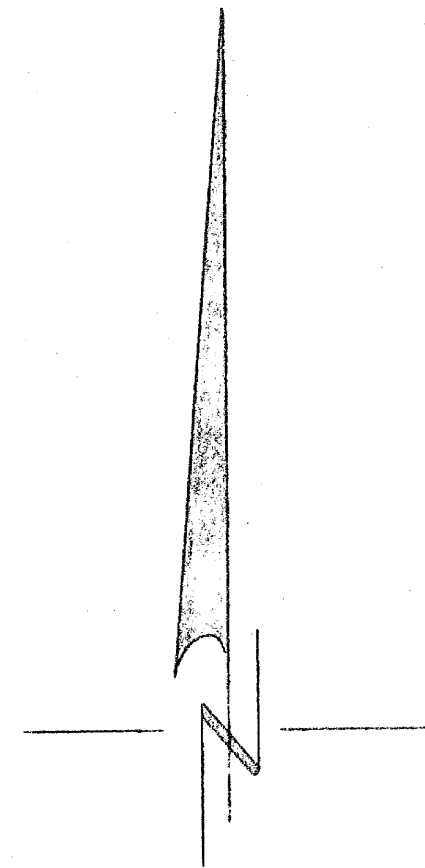
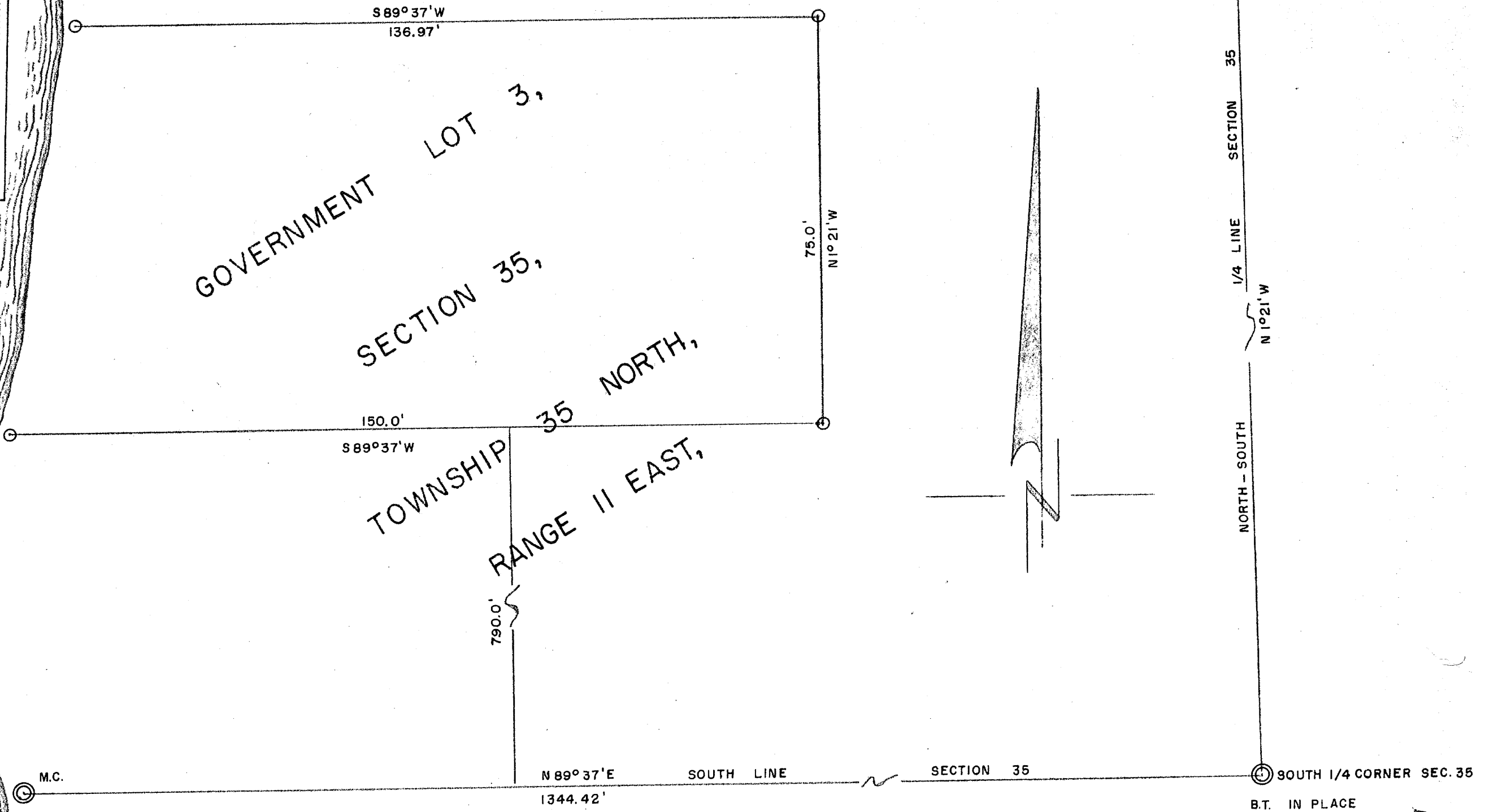
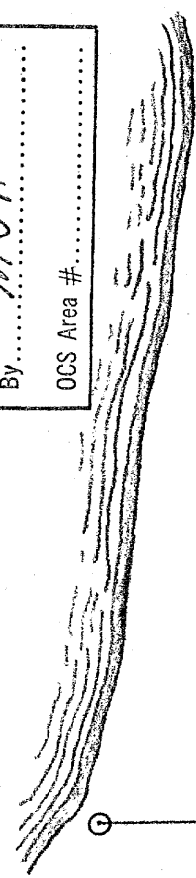


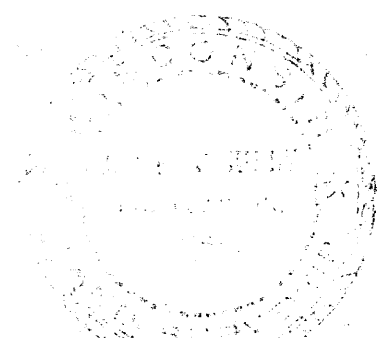
RECEIVED & FILED # **A15**
 Oneida County Surveyor's Office
 Date **FEB. 10. 1986**
 By **M JH**
 OCS Area #

LAKE

POST



- ⊙ CORNERS ESTABLISHED BY PREVIOUS SURVEY
- ⊙ IRON PIPE THIS SURVEY



General Engineer

A15

REVISIONS			SURVEY FOR		
NO.	DATE	BY	GEORGE ZIRNHILT		
1			11152 NORTH ORIOLE LANE 20W		
2			MEQUON, WIS.		
3			DRAWN BY	SCALE	MATERIAL
4			CHK'D	DATE	DRAWING NO.
5			TRACED	19 NOV. 64	3512