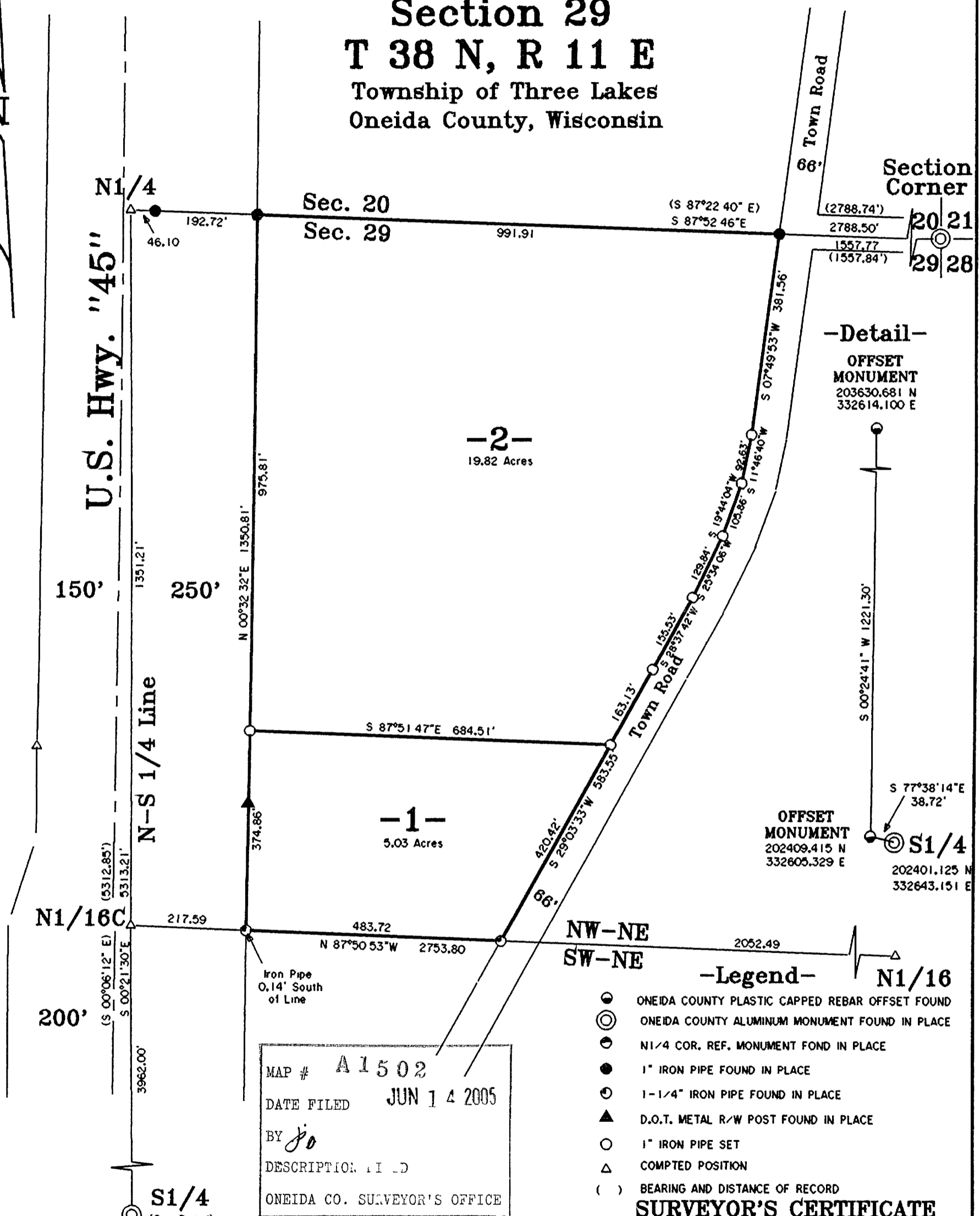


BEARINGS BASED ON COUNTY GRID BEARINGS BETWEEN THE N1/4 AND THE OFFSET MON. NEAR THE SOUTH 1/4 CORNER.

Being a Part of the NW1/4-NE1/4 Section 29 T 38 N, R 11 E Township of Three Lakes Oneida County, Wisconsin



-Detail- OFFSET MONUMENT 203630.681 N 332614.100 E

OFFSET MONUMENT 202409.415 N 332605.329 E S1/4 202401.125 N 332643.151 E

-Legend-

- ONEIDA COUNTY PLASTIC CAPPED REBAR OFFSET FOUND
ONEIDA COUNTY ALUMINUM MONUMENT FOUND IN PLACE
N1/4 COR. REF. MONUMENT FOND IN PLACE
1" IRON PIPE FOUND IN PLACE
1-1/4" IRON PIPE FOUND IN PLACE
D.O.T. METAL R/W POST FOUND IN PLACE
1" IRON PIPE SET
COMPTED POSITION
BEARING AND DISTANCE OF RECORD

SURVEYOR'S CERTIFICATE

I HEREBY CERTIFY THAT I HAVE SURVEYED AND MAPPED THE LANDS SHOWN HEREON AND THAT, TO THE BEST OF MY KNOWLEDGE AND BELIEF, THIS SURVEY AND MAP IS A TRUE AND CORRECT REPRESENTATION THEREOF...

Michael E. Weber, RLS H2070

MAP # A1502
DATE FILED JUN 14 2005
BY jo
DESCRIPTION: FIELD
ONEIDA CO. SURVEYOR'S OFFICE

Survey For Thomas Mayor
1215 N. Broad Street
Griffin, IN 46319

SCALE 1"=200' DATE 4-29-2005 DWN. BY. J.L.W.
DWG. NO. E2747 Eagle Landmark Surveying, Inc. EAGLE ER, WI

