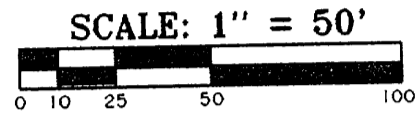


TRUE

Lot 1 of Certified Survey Map No. 3146

Being a Part of
Gov't. Lots 3 & 4
Section 34
T 39 N, R 11 E
Township of Three Lakes
Oneida County, Wisconsin



DATED THIS 6th DAY OF JUNE, 2005.

Thomas A. Boettcher
THOMAS A. BOETTCHER, R.L.S. #1763

Eagle Landmark Surveying, Inc.
5035 Highway 70 West
EAGLE RIVER, WI. 54521

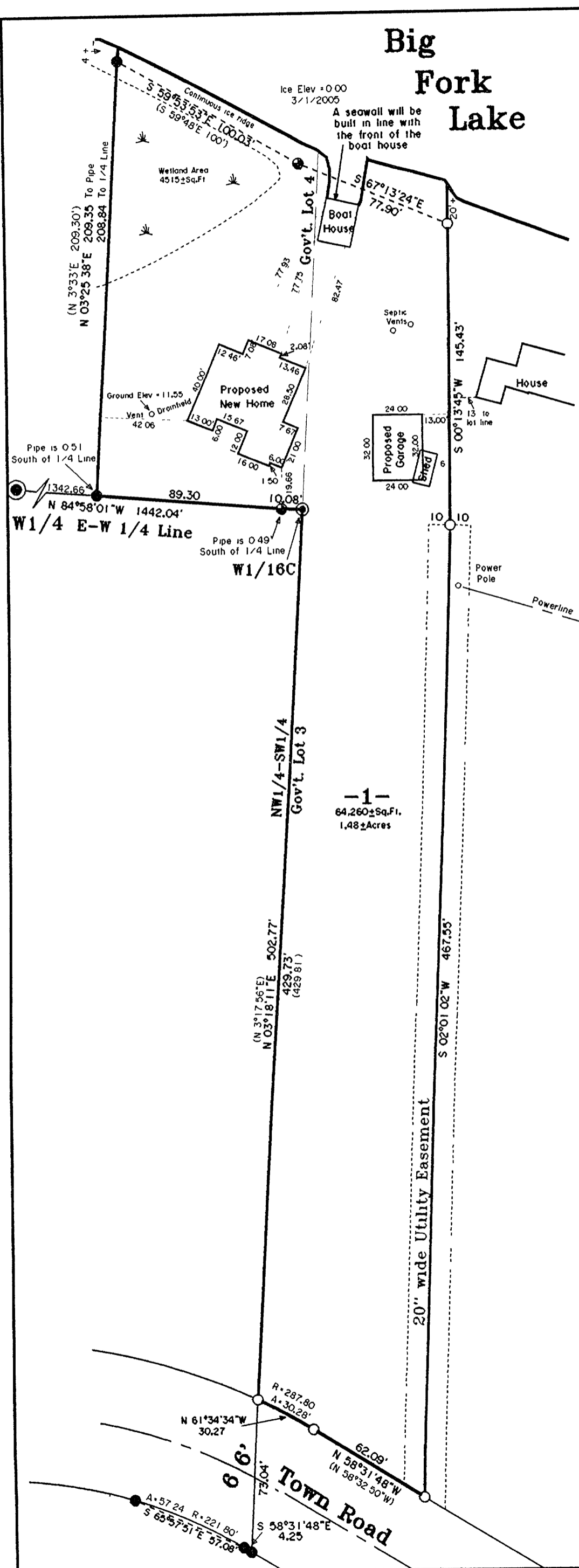
Site Plan For
Demlang Builders
N53 W24794 S. Corporate Circle
Sussex, WI 53089

-Legend-

- G.L.O. CONCRETE MONUMENT BRASS CAP IN PLACE
- U.S. FOREST SERVICE ALUMINUM MONUMENT FOUND IN PLACE
- 1-1/4" IRON PIPE FOUND IN PLACE
- 1" IRON PIPE FOUND IN PLACE
- 1" x 18" IRON PIPE SET
- () BEARING AND DISTANCE OF RECORD

MAP # **A1503**
 DATE FILED **JUN 14 2005**
 BY *J*
 DESCRIPTION FILED
 ONEIDA CO SURVEYOR'S OFFICE

Job #E2725-1



-1-
64,260±Sq.Ft.
1.48±Acres

Town Road