

SECTION SURVEY CONTROL

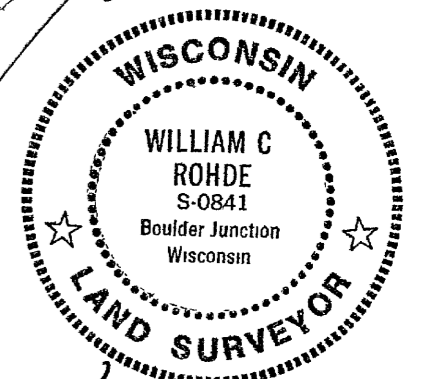
NORTH IS AT TOP OF SHEET

A1512

SECTION 22 TOWNSHIP 38 NORTH RANGE 8 EAST

SECTION CONTROL REFERENCED TO FIELD TRAVERSE BY MARVIN SEYMOUR, LAND SURVEYOR.
 RAW FIELD DATA CLOSURE AT 1/8000 USING TOPCON ET 1 TOTAL STATION.
 FIELD DATA ADJUSTMENT BY COMPASS RULE IS SHOWN ON THIS SECTION CONTROL PLOT.

REVISED

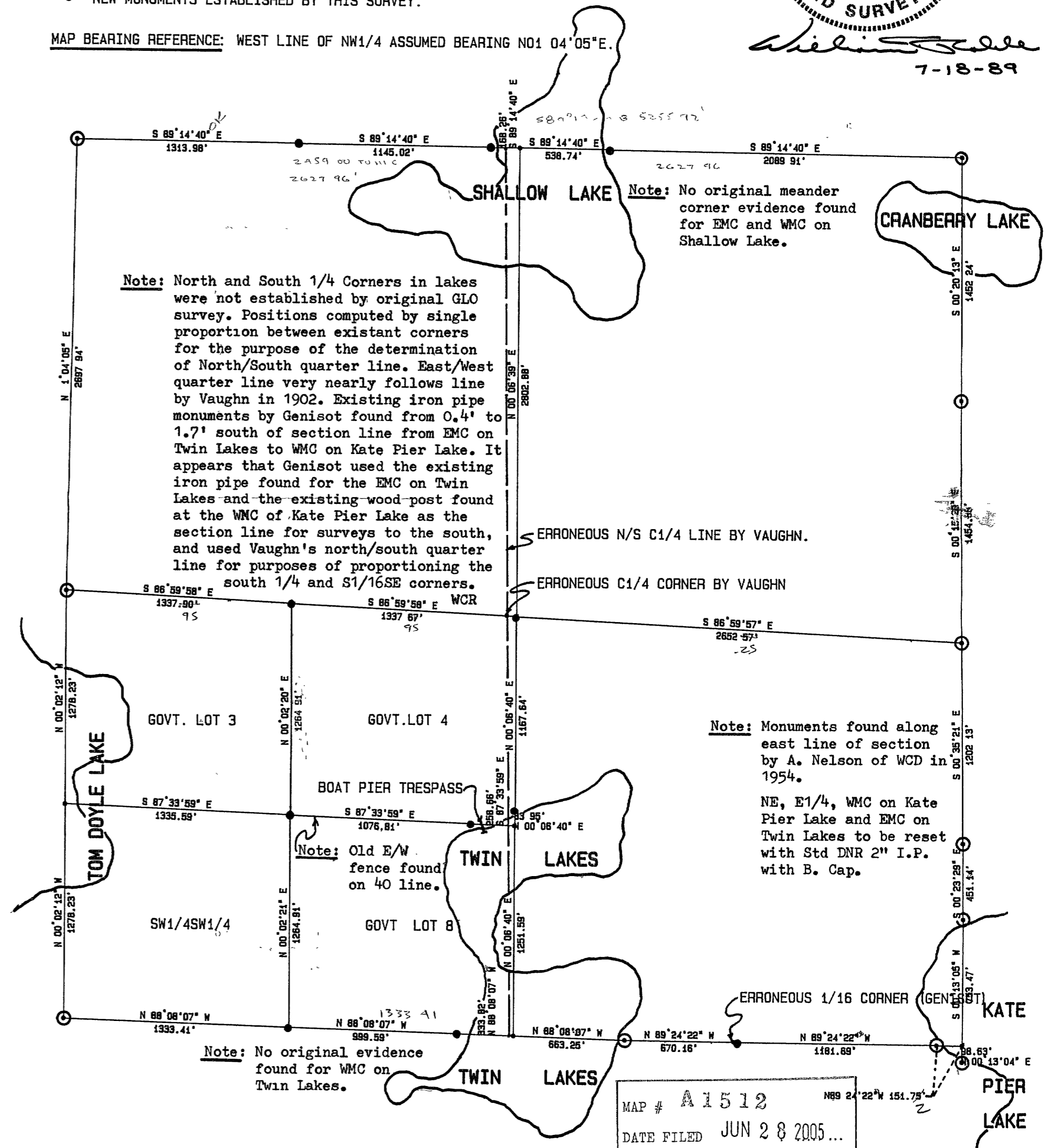


William C. Rohde
7-18-89

MONUMENTATION LEGEND.

- ⊙ EXISTING MONUMENT FOUND AND ACCEPTED BY THIS SURVEY.
- NEW MONUMENTS ESTABLISHED BY THIS SURVEY.

MAP BEARING REFERENCE: WEST LINE OF NW1/4 ASSUMED BEARING N01°04'05"E.



NOTE:

LAKE SHORELINE PLOTTED BY ESTIMATION FROM USGS QUAD MAP.

MAP # A1512
 DATE FILED JUN 28 2005...
 BY *JR*
 DESCRIPTION FILED
 ONEIDA CO SURVEYOR'S OFFICE

SCALE: 1" = 600'

COMPUTED AND PLOTTED BY WILLIAM C. ROHDE, RLS 841

SHEET 1 OF 1

A1512

A1512