

1527

# - PLAT OF SURVEY -

## LANDS BEING LOCATED IN PART OF THE SW 1/4 OF THE SE 1/4, SECTION 3, TOWNSHIP 37 NORTH, RANGE 9 EAST, TOWN OF PINE LAKE, ONEIDA COUNTY, WISCONSIN

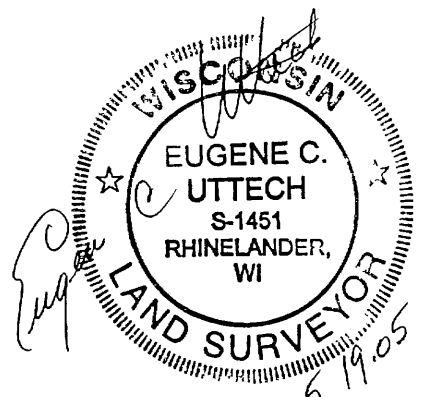
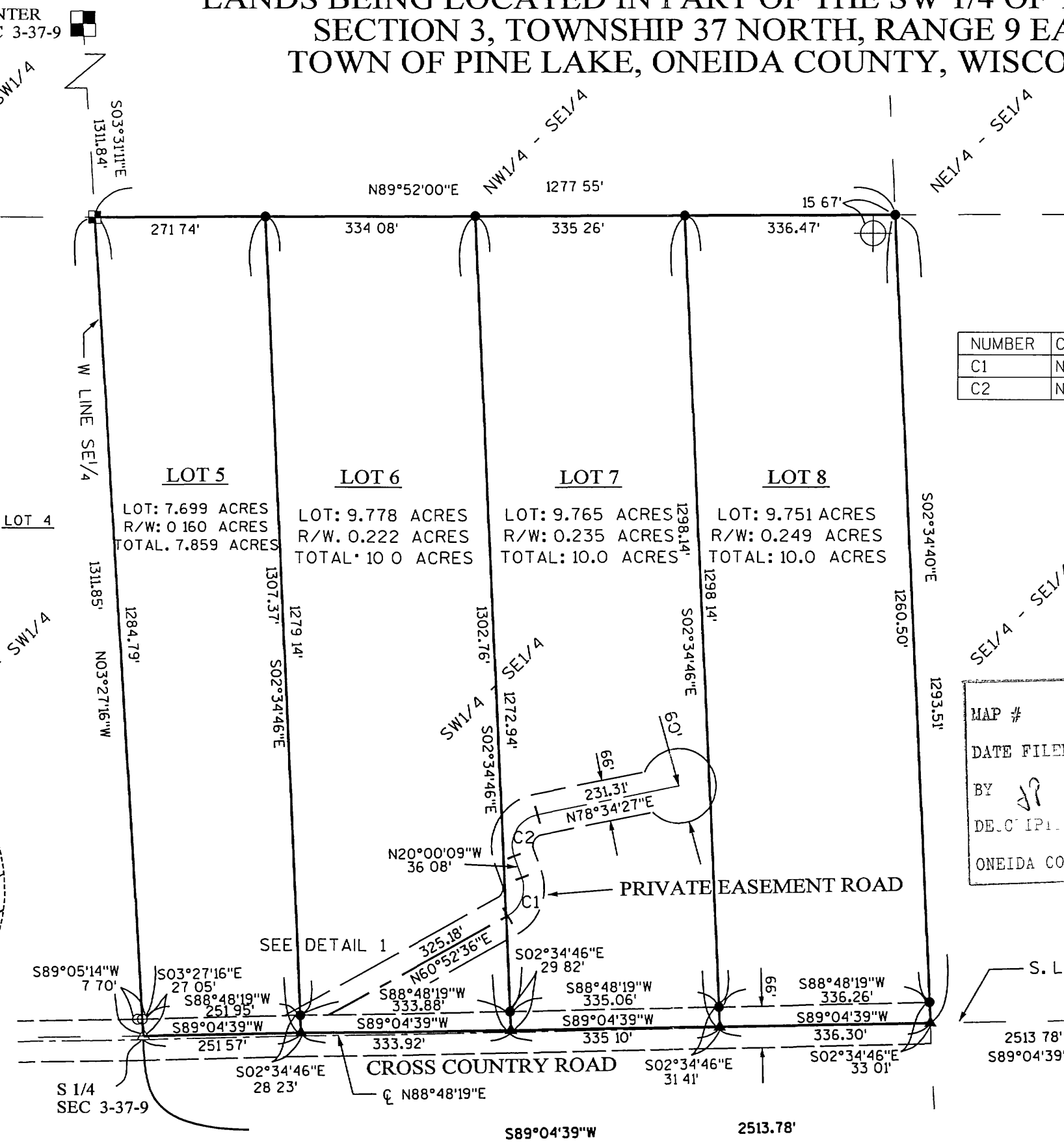


ALL BEARINGS ARE REFERENCED TO ASSUMED N89°05'14"E ALONG S LINE, SW 1/4, SEC 3, T.37N., R.9E.

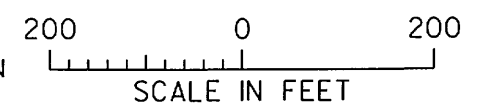
### LEGEND

- 3/4" X 24" IRON ROD, SET
- ◇ 1" DIA. IRON PIPE, FOUND
- ⊕ RIPCO MON, FOUND
- ⊙ RAILROAD SPIKE, FOUND
- 4" SQUARE BRASS TABLET, FOUND
- 2" SQUARE BRASS TABLET, FOUND
- ▲ PK NAIL, SET
- △ PK NAIL, FOUND
- X CALCULATED POSITION

NUMBER	CHORD BEARING	CHORD LENGTH	ARC LENGTH	RADIUS
C1	N 20°26'13" E	64.86'	70.58'	50.00'
C2	N 29°17'09" E	75.80'	86.02'	50.00'



MAP # 1527  
 DATE FILED JUL 18 2005  
 BY JP  
 DECORATED FILED YES  
 ONEIDA CO SURVEYOR'S OFFICE



CALCULATED POSITION FROM COUNTY COORDINATES

PLAT OF SURVEY

CLIENT:  
FRED HAGENY

**MSA** PROFESSIONAL SERVICES

TRANSPORTATION MUNICIPAL DEVELOPMENT ENVIRONMENTAL  
 1833 N. Stevens St. Rhineland, WI 54901  
 715-362-3244 1-800-844-7554 Fax: 715-362-4116  
 © MSA PROFESSIONAL SERVICES

DRAWN BY SJZ DATE 5-18-2005 SHEET 2 of 3  
 CHECKED BY FCU SCALE 1"=200' FILE NO. 980613 11X17c