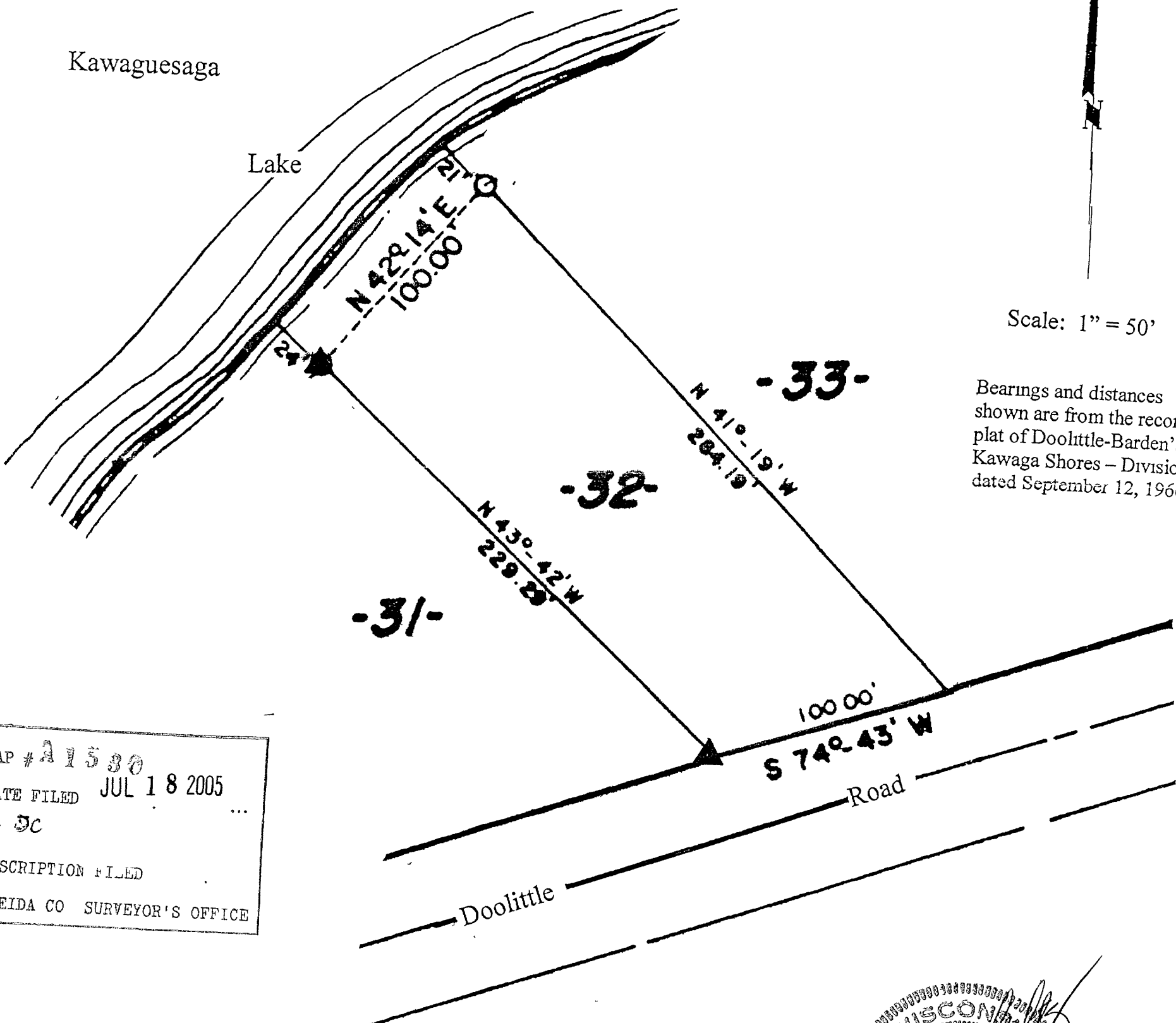


28973

Lot 32
 of
Doolittle - Barden's
Kawaga Shores - Division 2
 in
Government Lots 9 & 10
Section 15, T39N, R6E
 Town of Minocqua
 Oneida County, Wisconsin



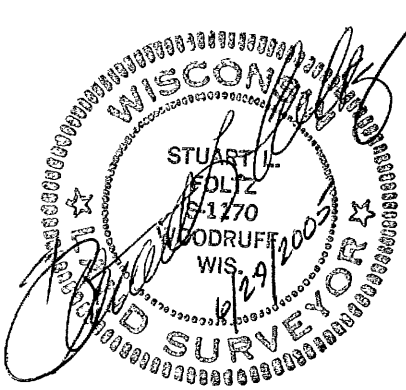
MAP # **A 1530**
 DATE FILED **JUL 18 2005**
 BY **DC**
 DESCRIPTION FILED
 ONEIDA CO SURVEYOR'S OFFICE

June 29, 2005

Recovered, verified, and marked monuments on the southwesterly line of Lot 32 of Doolittle-Barden's Kawaga Shores and checked for encroachments, as follows.

▲ = Iron monument found in place

This survey was completed by Foltz and Associates, Inc. for the purpose of locating existing lot corners and checking the subject lot line for encroachments by the order of Mary Ellen Poggemann who has executed a written waiver for all other requirements of Wis. Adm. Code Chap. A-E 7. A closed traverse was not made and the minimum accuracy is 1 part in 100 and plus or minus 2°.



Foltz and Associates, Inc.

Surveyors	Engineers
8612 Highway 51 North, (715) 356-9485	Minocqua, Wisconsin 54548 fax (715) 356-1841