

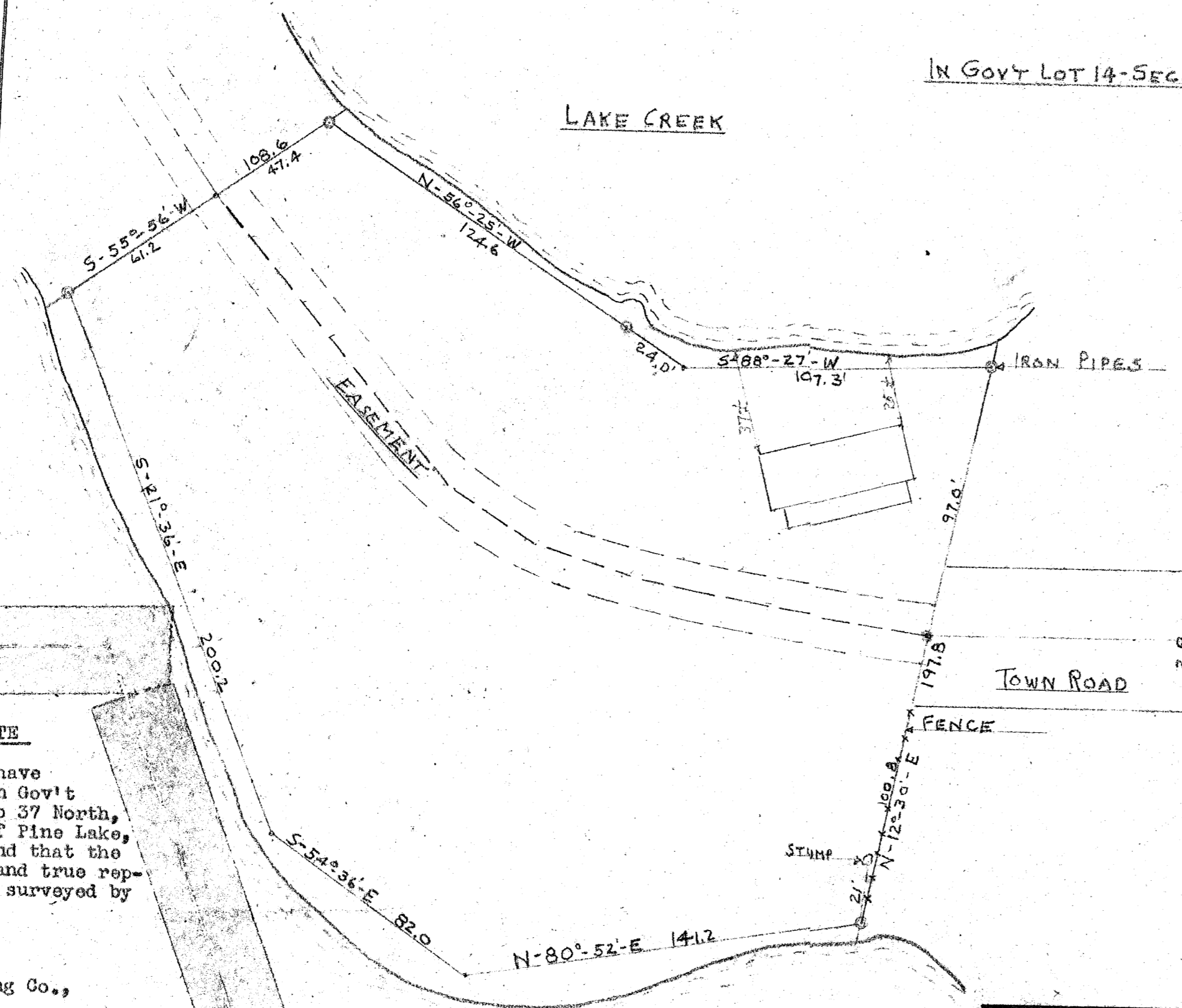
A1539

A1539

MAP # A1539
 DATE FILED AUG 19 2005
 BY: *J.C.K.*
 DESCRIPTION FILED
 ONEIDA CO. SURVEYOR'S OFFICE

IN GOV'T LOT 14-SEC. 29-T37N-R9E

LAKE CREEK



SURVEYOR'S CERTIFICATE

We hereby certify, that we have surveyed a parcel of land in Gov't Lot 14, Section 29, Township 37 North, Range 9 East, in the Town of Pine Lake, Oneida County, Wisconsin, and that the attached plat is a correct and true representation of the lands so surveyed by us.

Dated Aug. 19, 1957.
 Genisot Engineering Co.,

Per *Joseph C. Kirby*

REVISED 8-5-71

A1539



REV. 7-23-78

REVISIONS			SURVEY FOR P.L. SCHROEDER		
NO.	DATE	BY	IN GOV'T LOT 14-SEC. 29-T37N-R9E		
1			DRAWN BY	SCALE	MATERIAL
2			P.L.S.	1" = 40'	
3			CHK'D	DATE	DRAWING NO.
4			J.C.K.	8-19-57	2312
5			TRACED	APP'D	

A1539