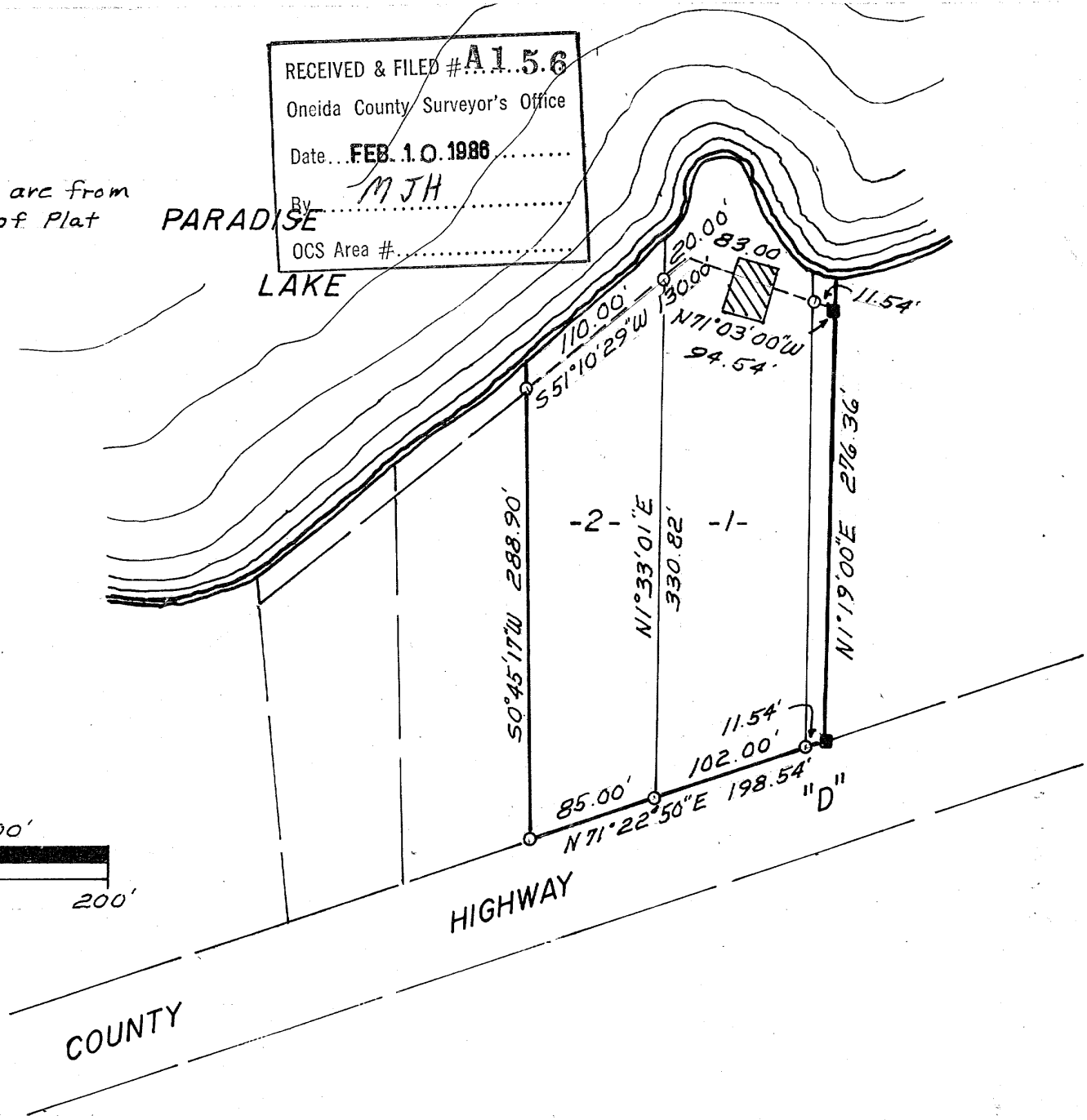
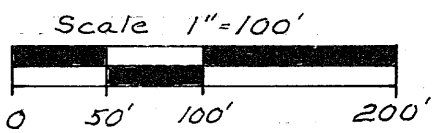


1-24-38-9

RECEIVED & FILED # **A1.5.6**  
Oneida County Surveyor's Office  
Date... **FEB. 1. 0. 1988**  
By **MJH**  
OCS Area #.....

Bearing used arc from  
east line of Plat

**PARADISE LAKE**



Part of the  
PLAT OF  
**DONELDA PLAYGROUNDS**  
GOV'T. LOT 1  
SECTION 24, T39N, R8E

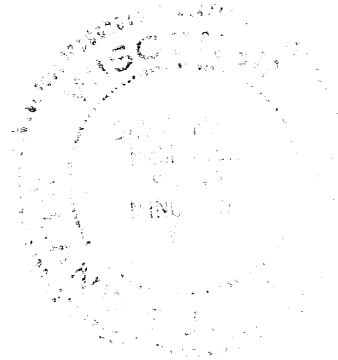
Newbold Township  
Oneida County, Wisconsin

- = 6X6 concrete monument found
- = 1 1/4" iron pipe set.
- ▨ = Existing building

Note:

Iron pipes were set  
by turning angles from  
plat. Because of no  
monumentation to west  
of this plat.

**DAVE McMULLEN & ASSOC.**



*David J. McMullen*  
Registered Land Surveyor S-1340  
Dated at Minocqua, Wisconsin  
This 4<sup>th</sup> day of Aug, 1980

156 IV