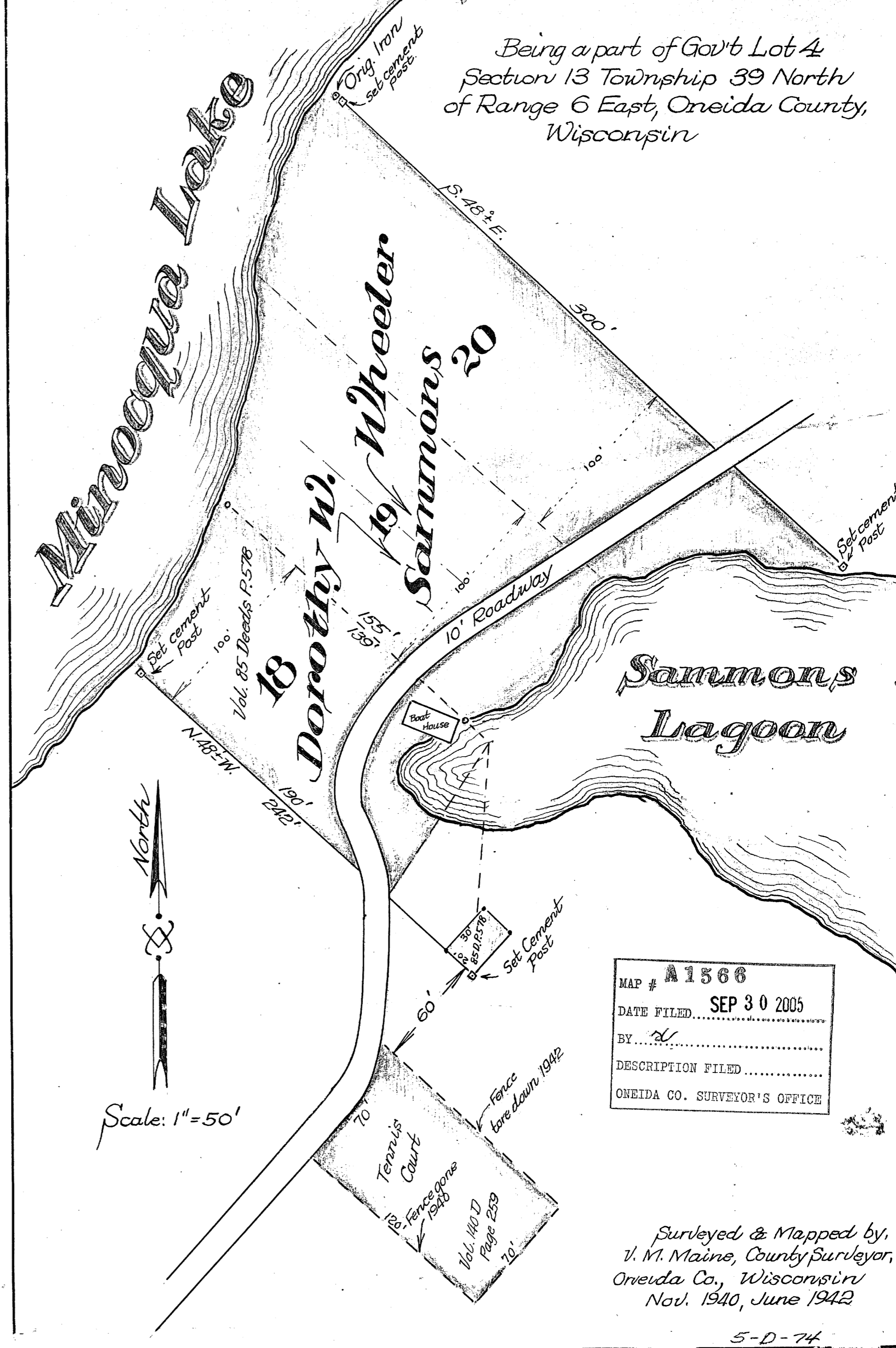


Map of Survey of platted lots 18, 19, 20. Plat of Howards Point

Being a part of Gov't Lot 4
Section 13 Township 39 North
of Range 6 East, Oneida County,
Wisconsin



North

Scale: 1" = 50'

MAP # A1566
 DATE FILED... SEP 30 2005
 BY...
 DESCRIPTION FILED...
 ONEIDA CO. SURVEYOR'S OFFICE

Surveyed & Mapped by,
 V. M. Maine, County Surveyor,
 Oneida Co., Wisconsin
 Nov. 1940, June 1942

5-D-74