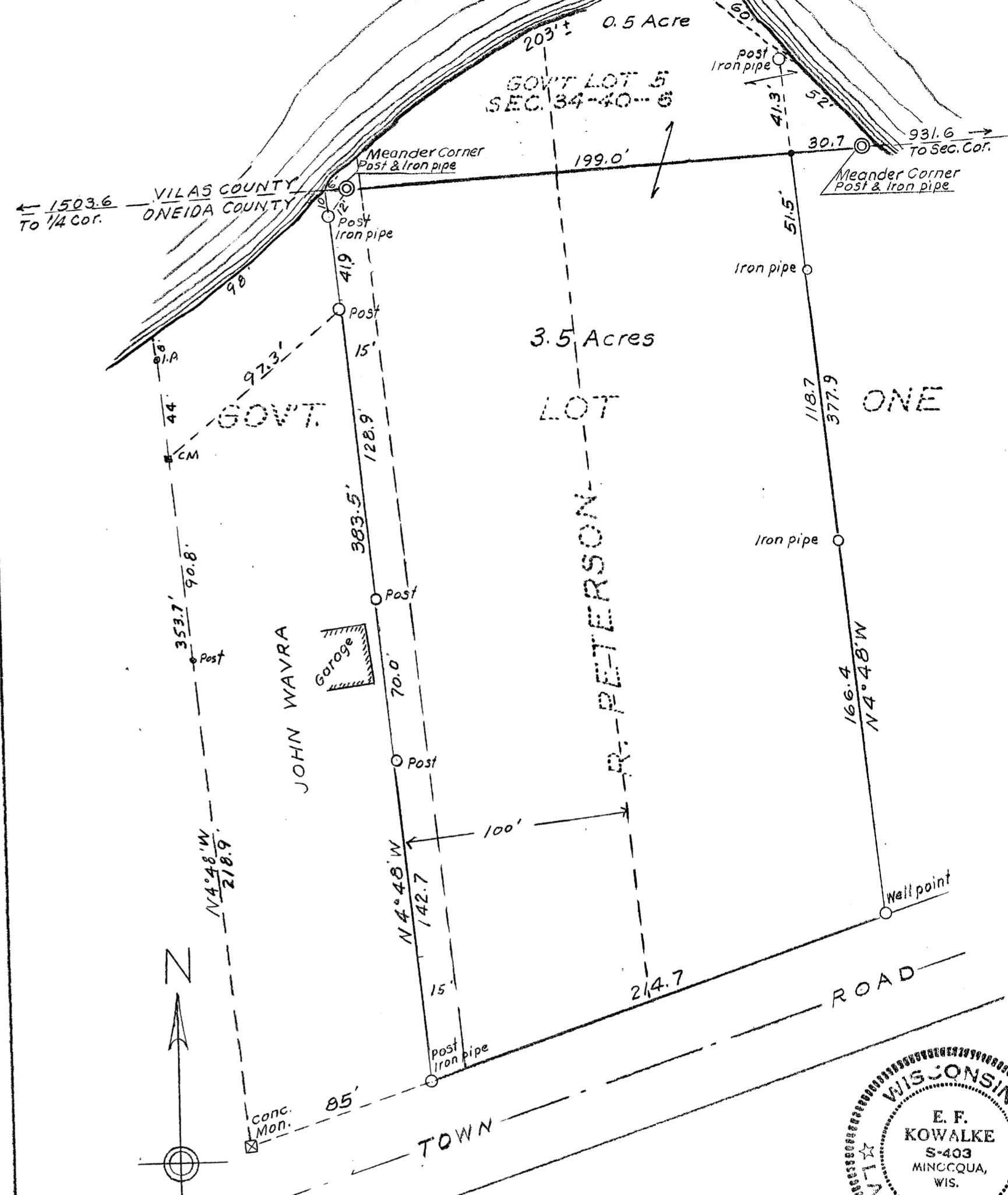


JOHNSON

LAKE

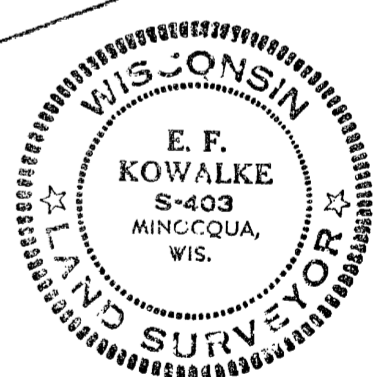


PARTS OF
 GOV'T LOT 1, SEC. 3, T39N-R6E
 AND
 GOV'T LOT 5, SEC. 34, T40N-R6E
 ONEIDA & VILAS COUNTIES

December 21, 1959 E. F. Kowalke
Surveyor

Scale: 1 inch = 50 feet

— REVISED —
 FEB. 7, 1961



5-D-16

MAP #	A1569
DATE FILED	SEP 30 2005
BY	JU
DESCRIPTION FILED	
ONEIDA CO. SURVEYOR'S OFFICE	