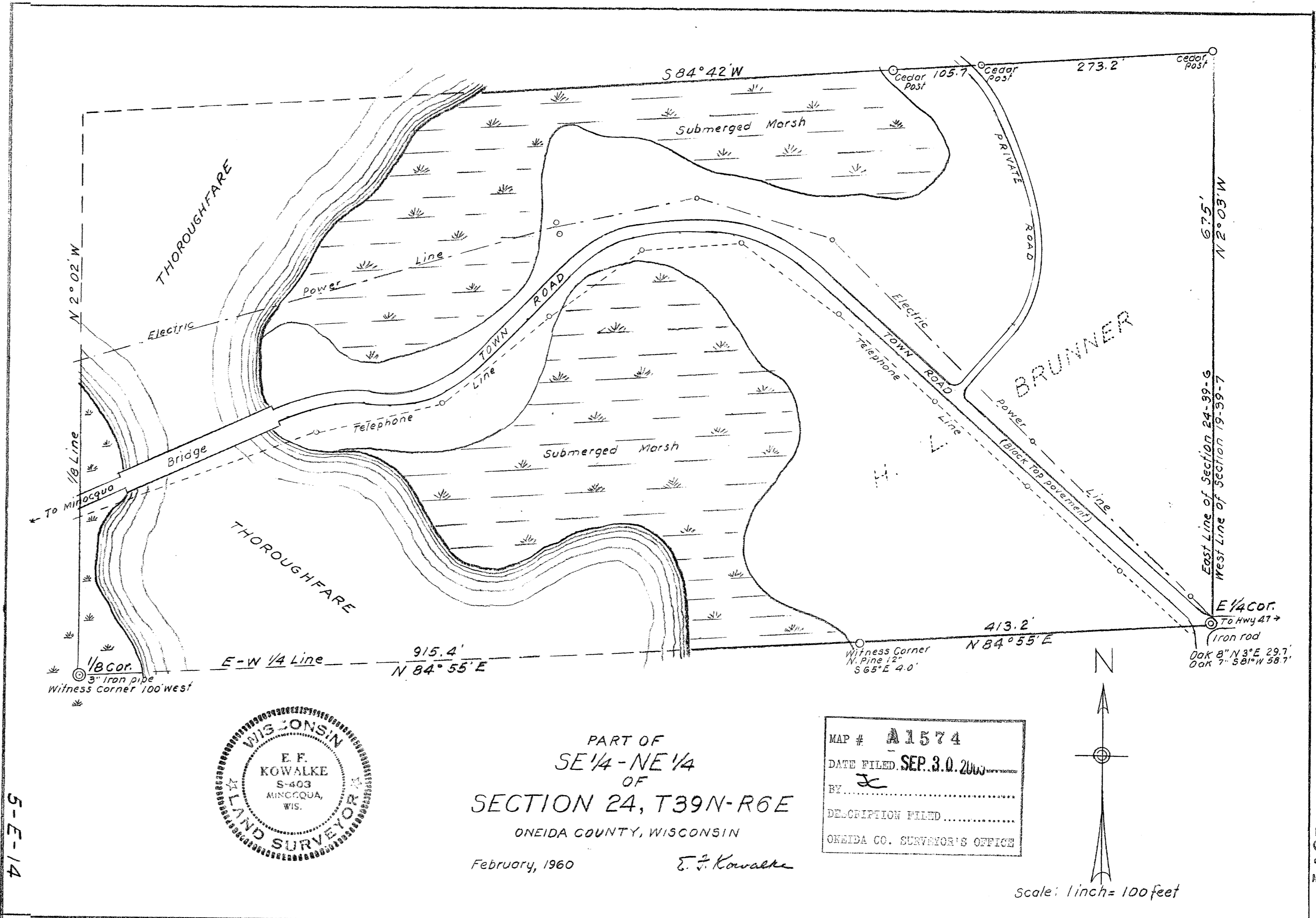


A1574

A1574

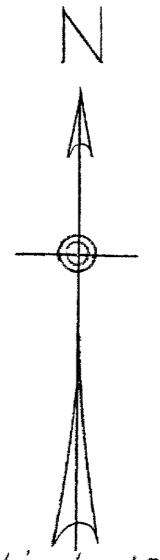
5-E-14



PART OF
SE 1/4 - NE 1/4
OF
SECTION 24, T39N-R6E
ONEIDA COUNTY, WISCONSIN

February, 1960 *E. F. Kowalke*

MAP # **A1574**
DATE FILED **SEP. 3. 0. 2000**
BY *JK*
DESCRIPTION FILED.....
ONEIDA CO. SURVEYOR'S OFFICE



Scale: 1 inch = 100 feet

A1574

A1574