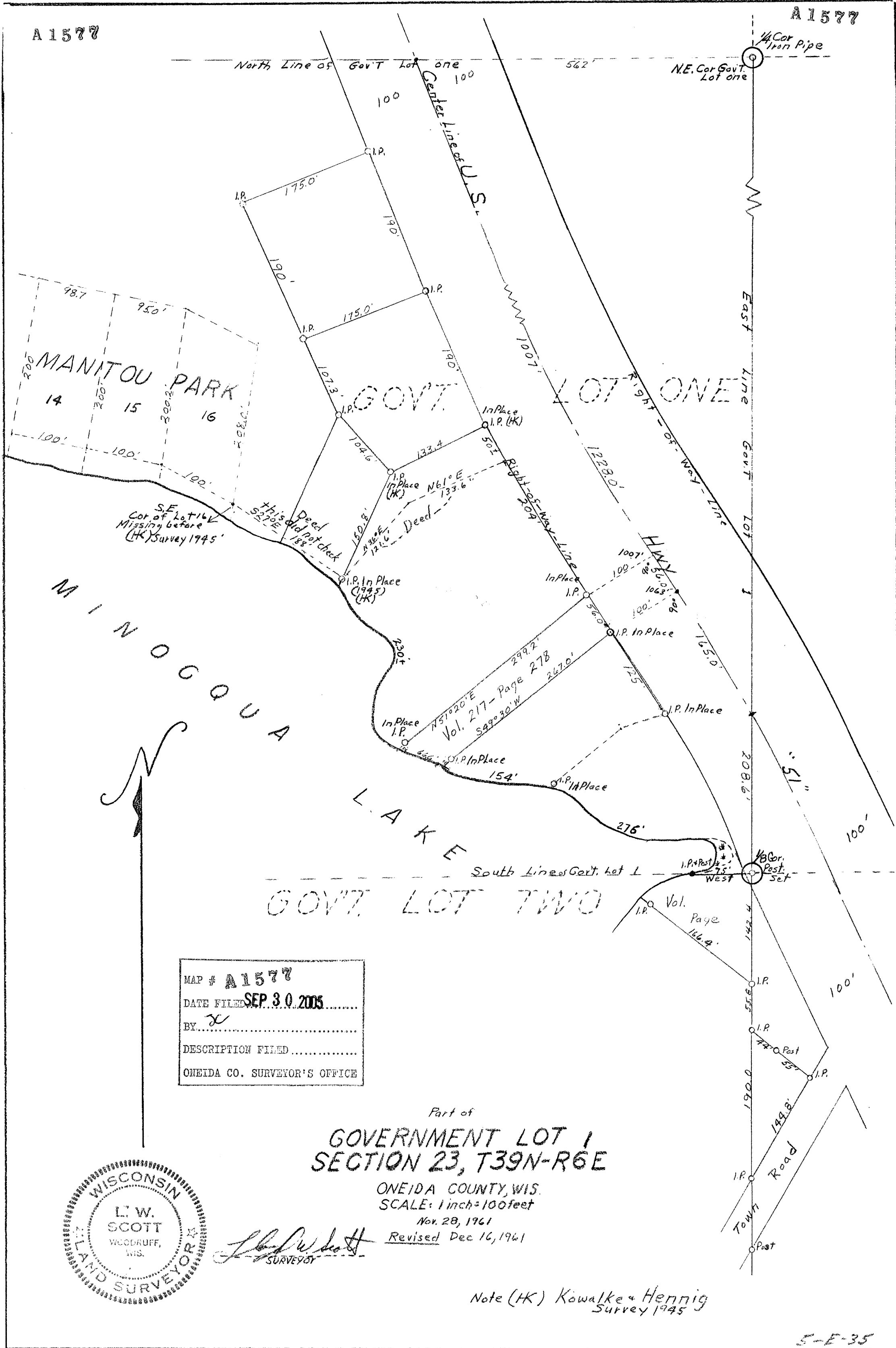


A1577

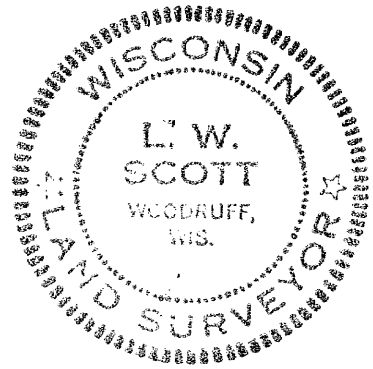
A1577



MAP # A1577  
 DATE FILED SEP. 30. 2005  
 BY: [Signature]  
 DESCRIPTION FILED  
 ONEIDA CO. SURVEYOR'S OFFICE

Part of  
**GOVERNMENT LOT 1**  
**SECTION 23, T39N-R6E**

ONEIDA COUNTY, WIS.  
 SCALE: 1 inch = 100 feet  
 Nov. 28, 1961  
 Revised Dec 16, 1961



[Signature]  
 SURVEYOR

Note (HK) Kowalke & Hennig  
 Survey 1945

A1577

A1577

5-E-35