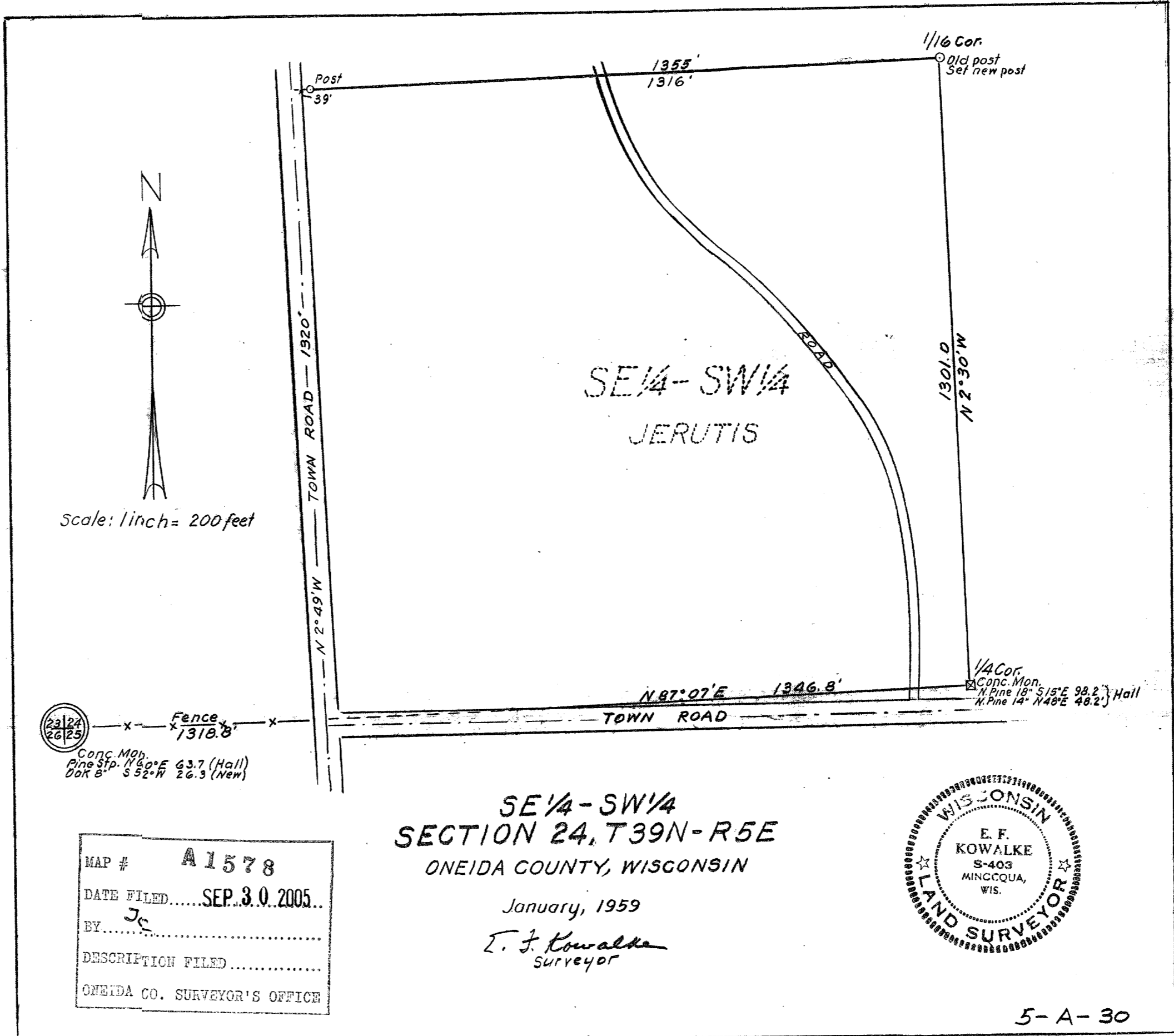


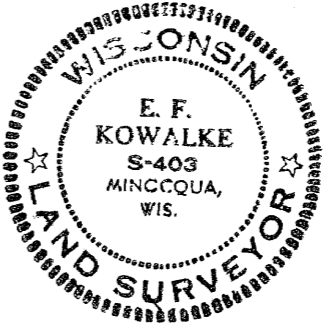
A1578

A1578



SE 1/4 - SW 1/4
SECTION 24, T39N - R5E
ONEIDA COUNTY, WISCONSIN

January, 1959
E. F. Kowalke
Surveyor



MAP # A1578
DATE FILED.....SEP. 30. 2005..
BY Jc
DESCRIPTION FILED.....
ONEIDA CO. SURVEYOR'S OFFICE

5-A-30

A1578

A1578