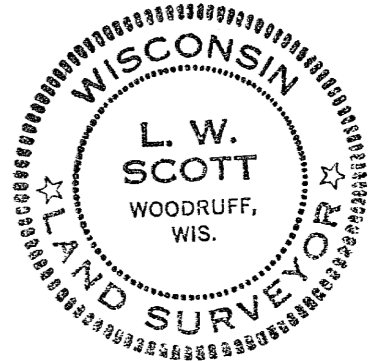


MAP # A 1579
 DATE FILED SEP 30 2005
 BY SC
 DESCRIPTION FILED
 ONEIDA CO. SURVEYOR'S OFFICE

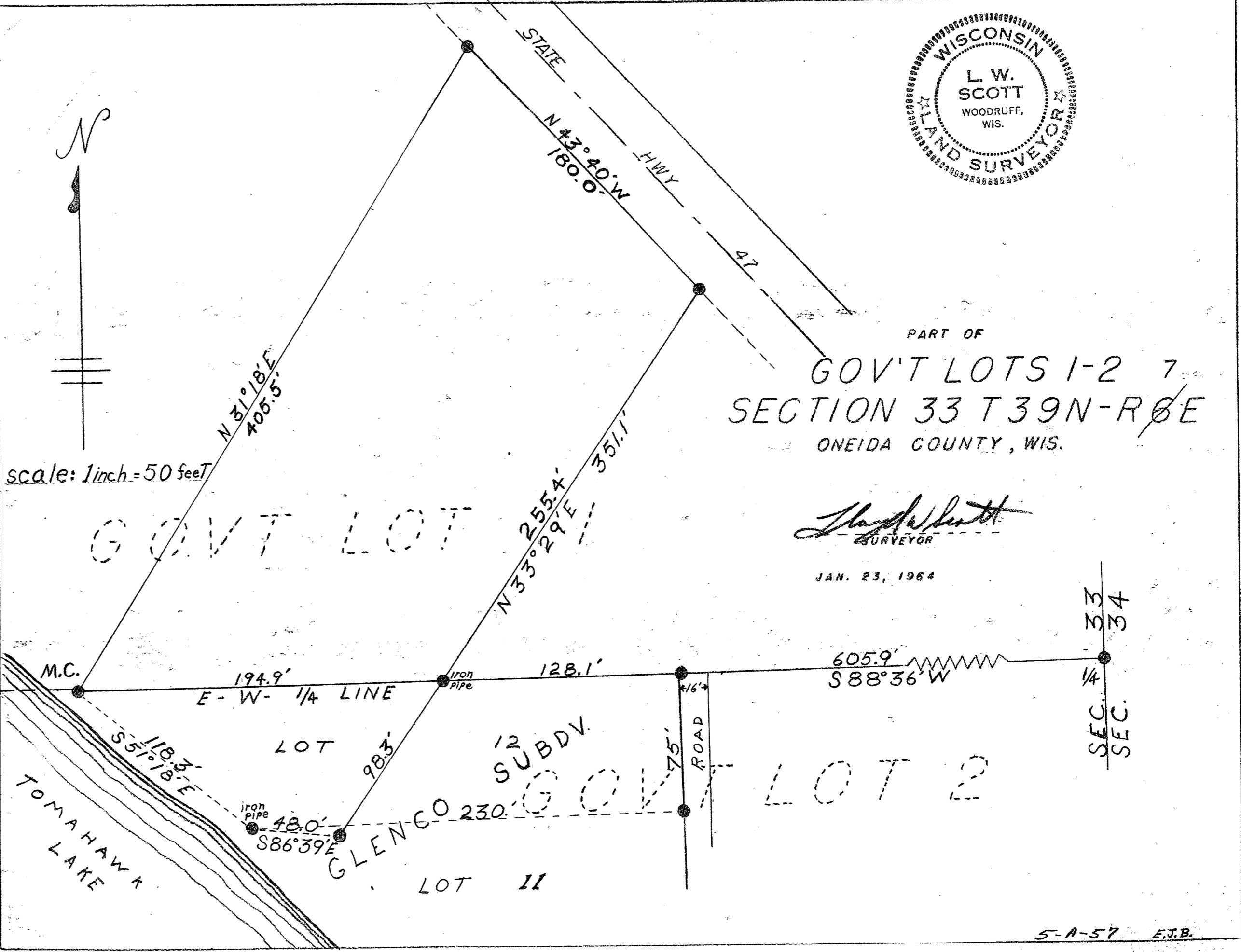


PART OF
 GOV'T LOTS 1-2 7
 SECTION 33 T39N-R0E
 ONEIDA COUNTY, WIS.

L. W. Scott
 SURVEYOR

JAN. 23, 1964

scale: 1 inch = 50 feet



A1579

5-A-57 E.J.B.

A1579

A1579