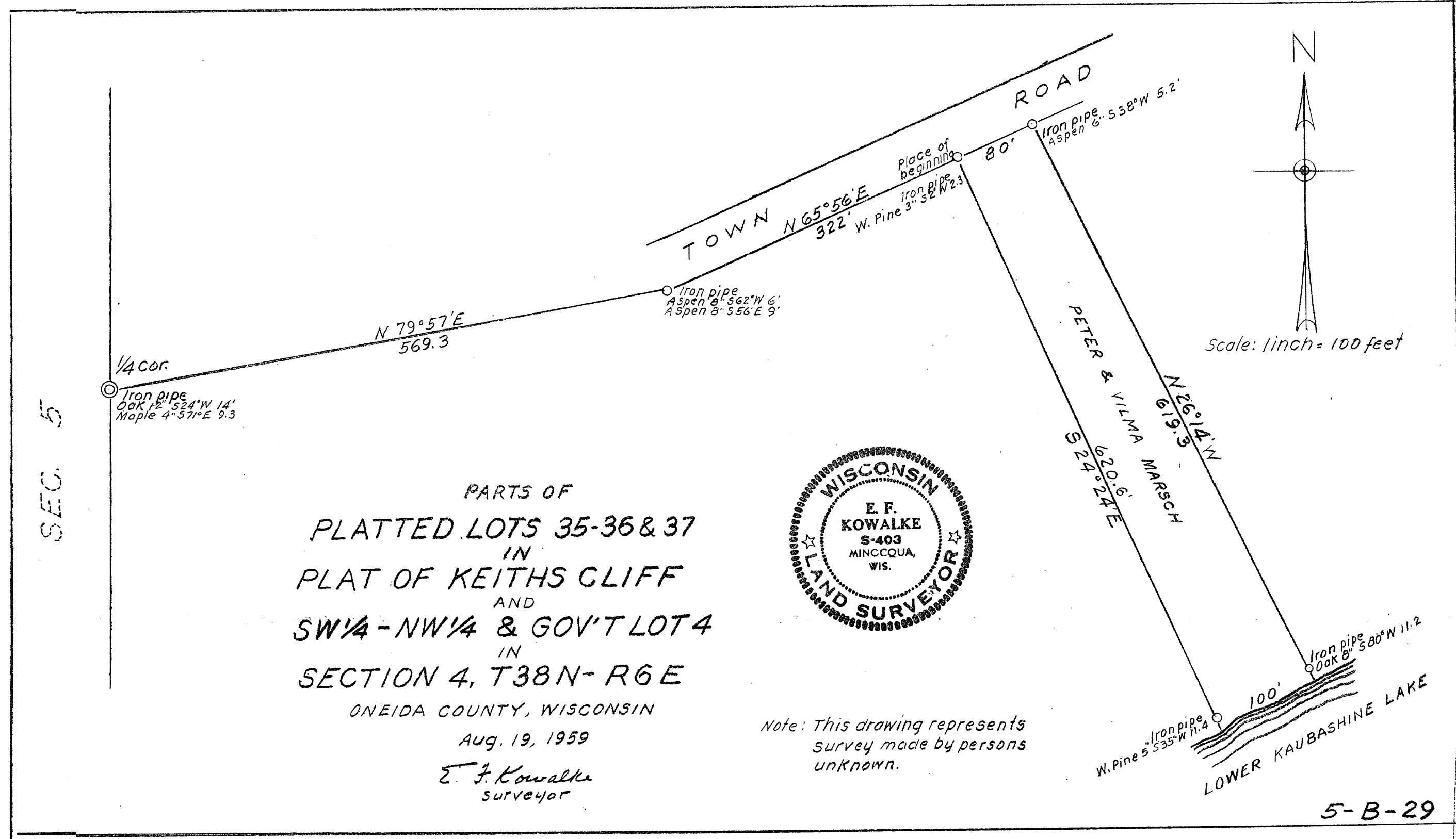


SEC. 5



PARTS OF  
 PLATTED LOTS 35-36 & 37  
 IN  
 PLAT OF KEITHS CLIFF  
 AND  
 SW 1/4 - NW 1/4 & GOV'T LOT 4  
 IN  
 SECTION 4, T38N-R6E  
 ONEIDA COUNTY, WISCONSIN



Aug. 19, 1959  
 E. F. Kowalke  
 Surveyor

Note: This drawing represents  
 survey made by persons  
 unknown.

5-B-29

MAP # A 1584  
 DATE FILED SEP 30 2005  
 BY X  
 DESCRIPTION FILED  
 ONEIDA CO. SURVEYOR'S OFFICE