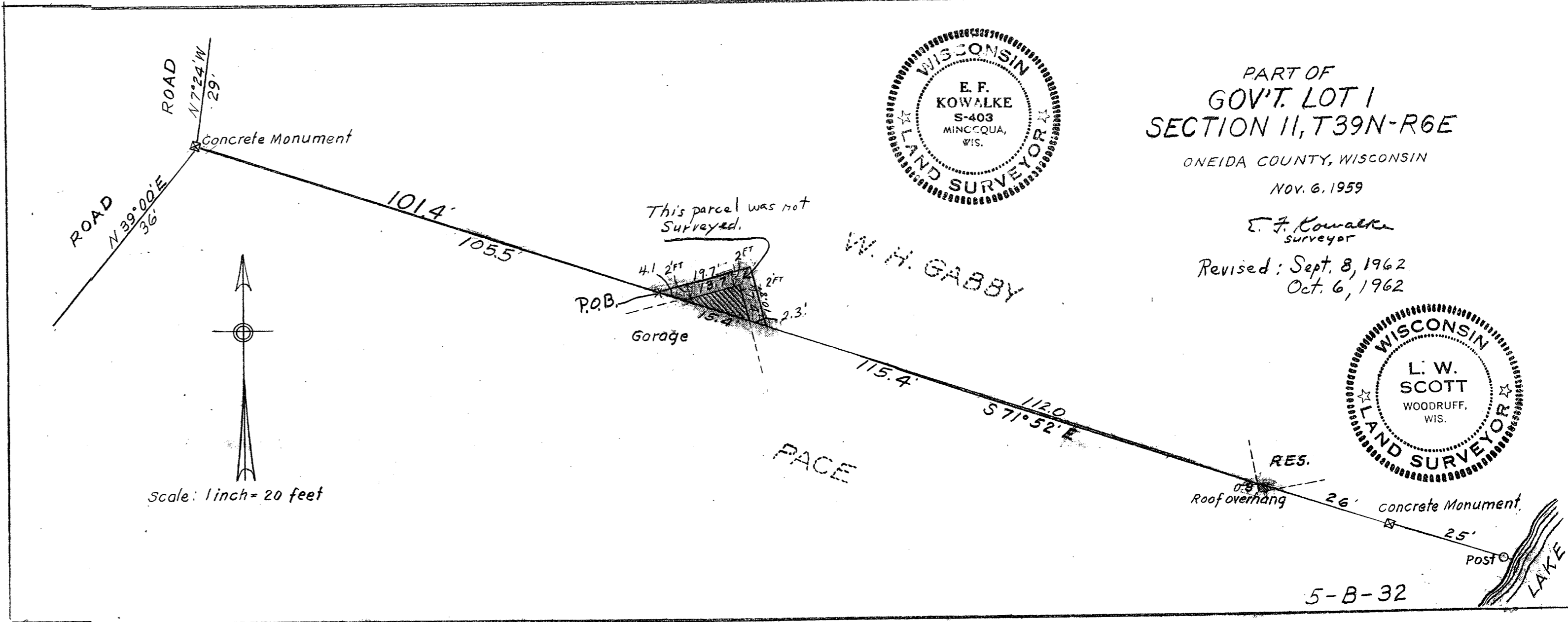


A 1585

A 1585

MAP # A 1585
 DATE FILED SEP 30 2005
 BY J.C.
 DESCRIPTION FILED
 ONEIDA CO. SURVEYOR'S OFFICE

A 1585



W. H. GABBY

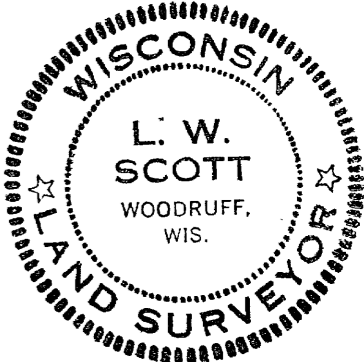
PART OF
 GOV'T. LOT 1
 SECTION 11, T39N-R6E

ONEIDA COUNTY, WISCONSIN

NOV. 6, 1959

E. F. Kowalke
surveyor

Revised: Sept. 8, 1962
Oct. 6, 1962



A 1585