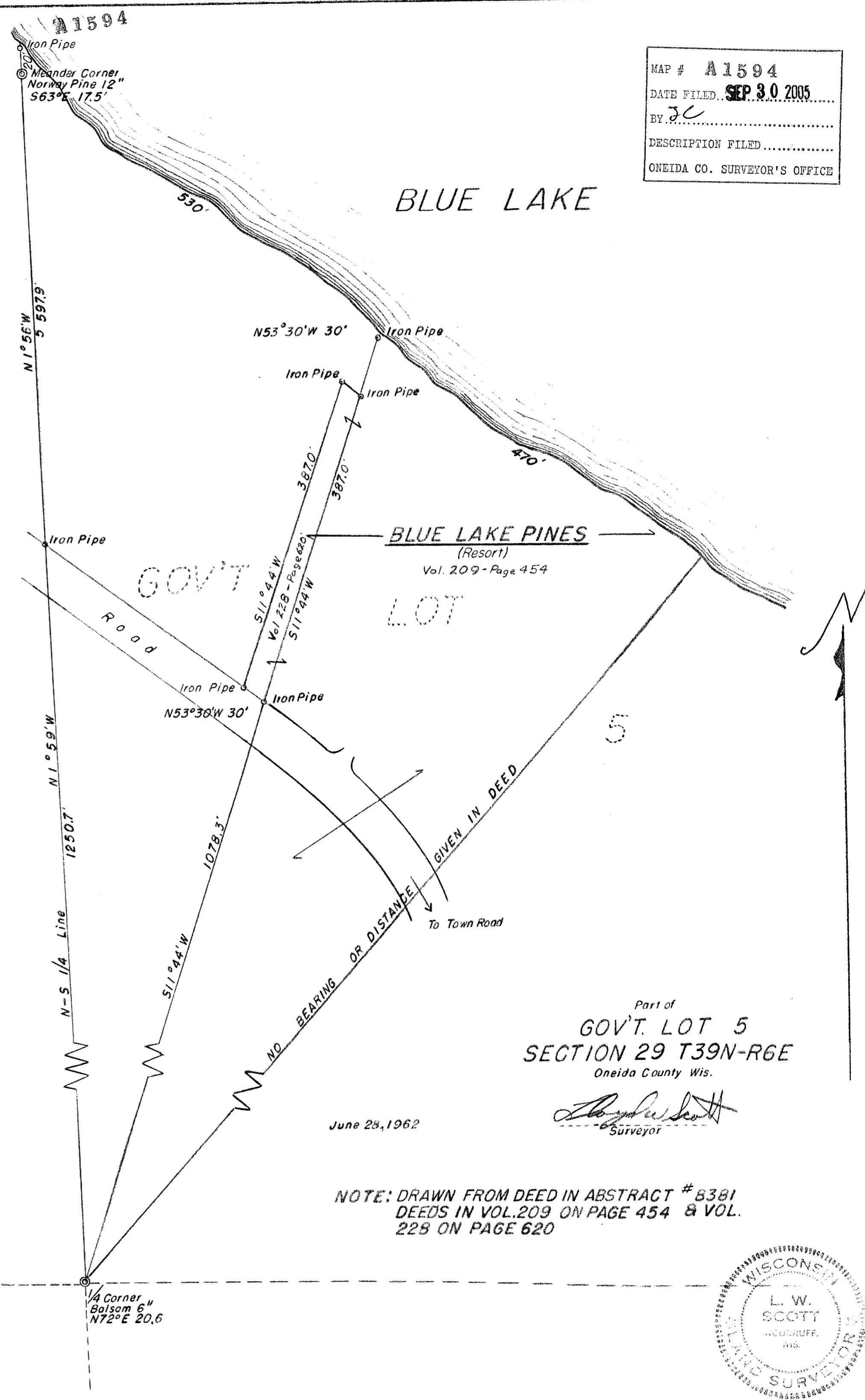


MAP # A1594
 DATE FILED SEP 30 2005
 BY J.C.
 DESCRIPTION FILED
 ONEIDA CO. SURVEYOR'S OFFICE



Part of
 GOV'T. LOT 5
 SECTION 29 T39N-R6E
 Oneida County Wis.

L. W. Scott
 Surveyor

June 28, 1962

NOTE: DRAWN FROM DEED IN ABSTRACT # 8381
 DEEDS IN VOL. 209 ON PAGE 454 & VOL.
 228 ON PAGE 620

