

A1607

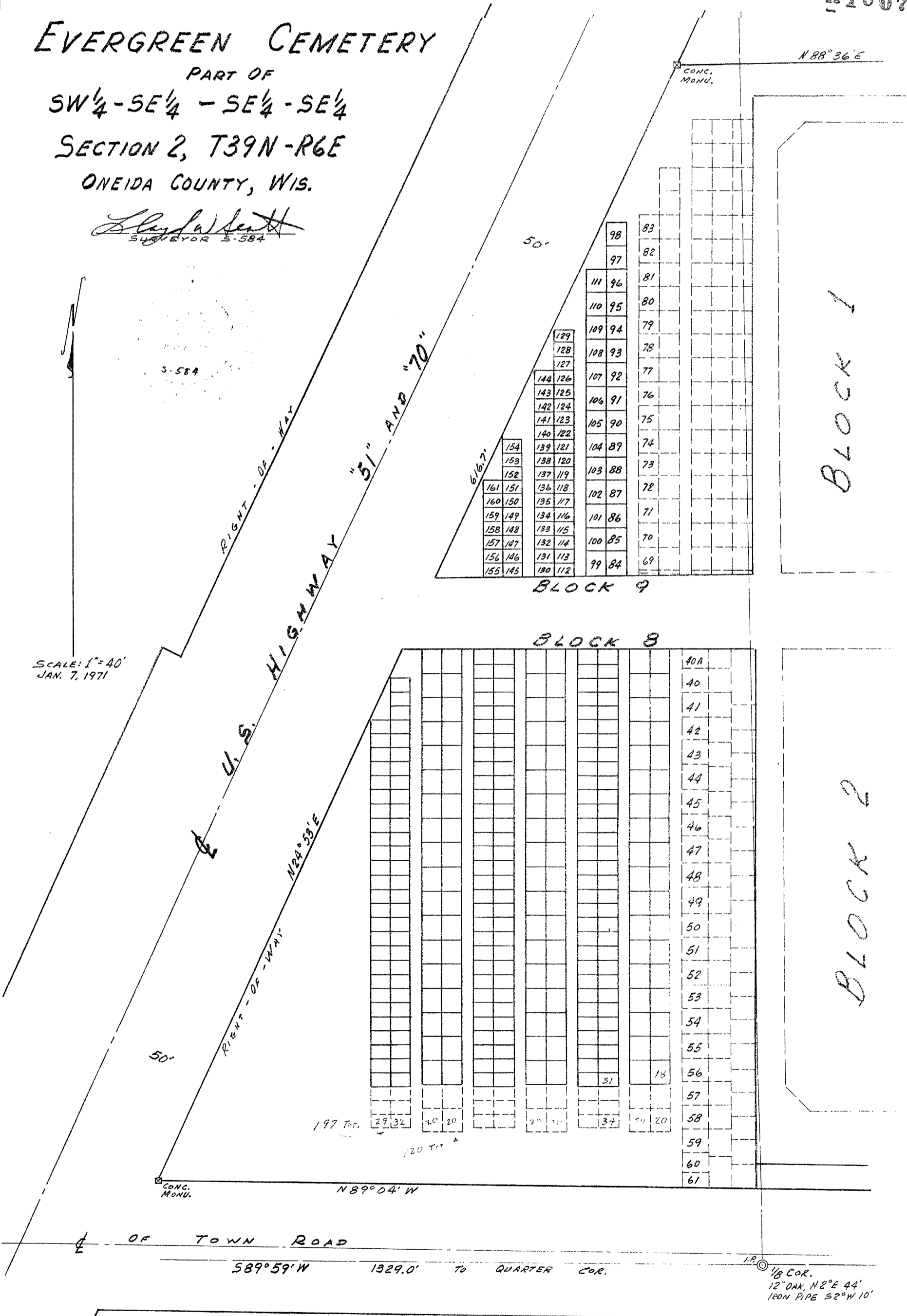
A1607

# EVERGREEN CEMETERY

PART OF  
SW $\frac{1}{4}$ -SE $\frac{1}{4}$  - SE $\frac{1}{4}$ -SE $\frac{1}{4}$   
SECTION 2, T39N-R6E  
ONEIDA COUNTY, WIS.

*Clayton Smith*  
SURVEYOR S-584

SCALE: 1" = 40'  
JAN. 7, 1971



MAP # **A1607**  
 DATE FILED... **OCT 06 2005**  
 BY... *[Signature]*  
 DESCRIPTION FILED...  
 ONEIDA CO. SURVEYOR'S OFFICE

A1607

A1607