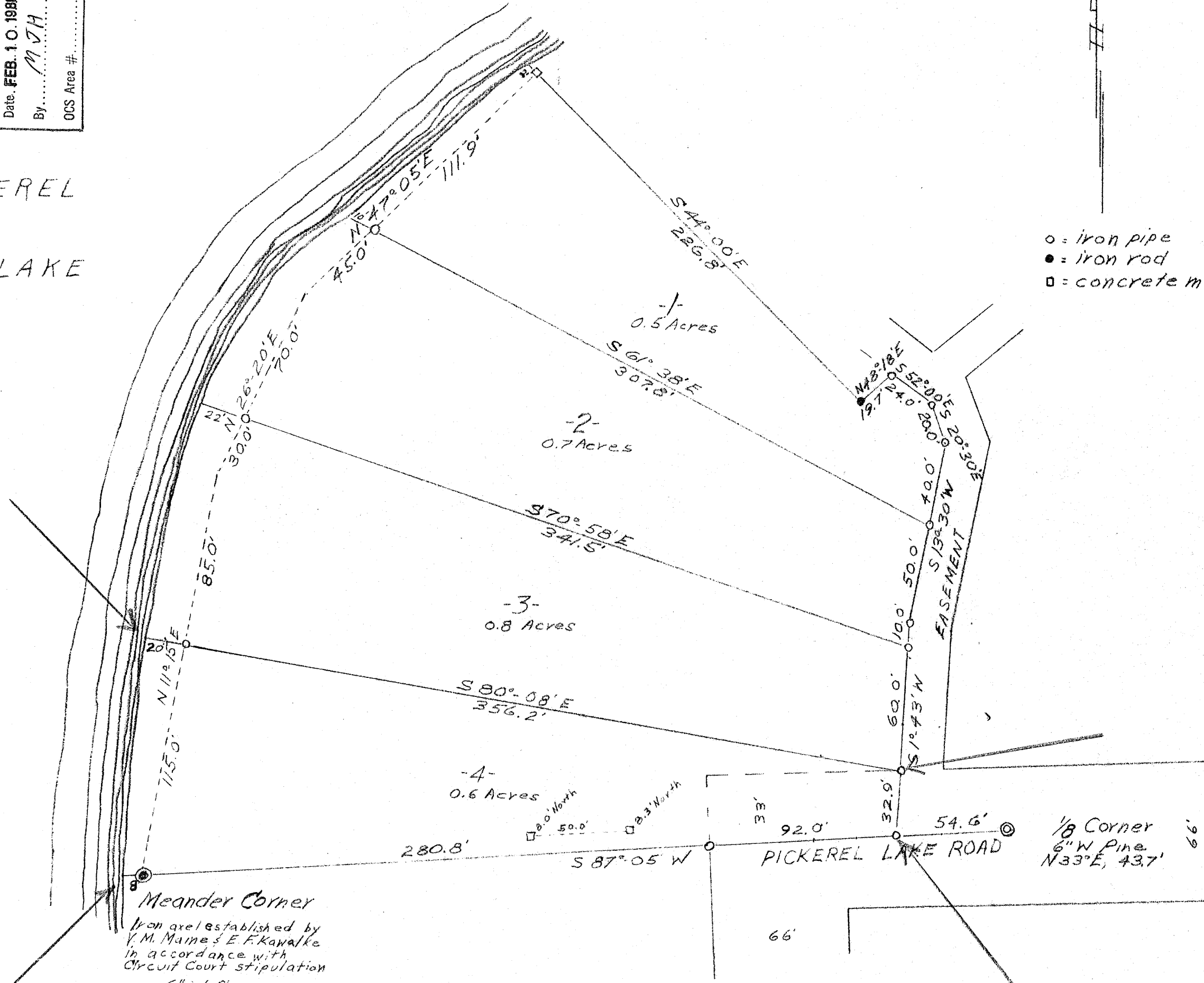


RECEIVED & FILED #A161  
 Oneida County Surveyor's Office  
 Date, FEB. 10, 1986  
 By, M.J.H.  
 OCS Area #

Sec 8-39-8

PICKEREL  
 LAKE



○ = iron pipe  
 ● = iron rod  
 □ = concrete monument

Meander Corner  
 Iron axe established by  
 V. M. Maine & E. F. Kawalke  
 in accordance with  
 Circuit Court stipulation  
 6" W Pine

A161