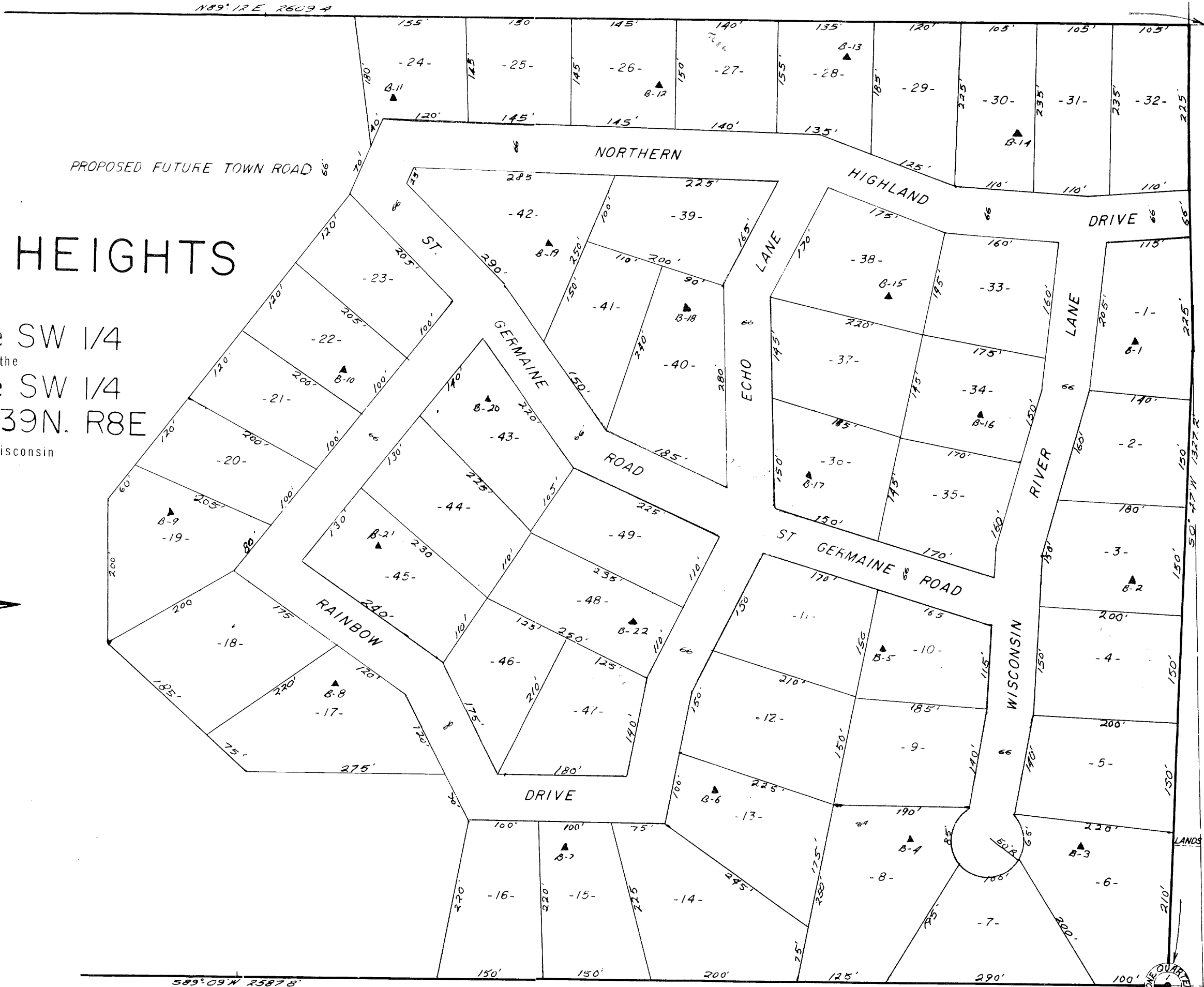
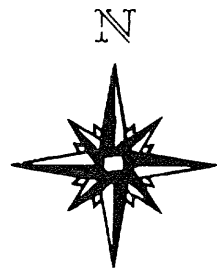


RECEIVED & FILED # **A.I. 62**  
 Oneida County Surveyor's Office  
 Date **FEB. 10 1988**  
 By **MJH**  
 OCS Area #

# HAPPINESS HEIGHTS

the  
 SE 1/4 of the SW 1/4  
 and part of the  
 SW 1/4 of the SW 1/4  
 SECTION 1, T39N. R8E  
 Oneida County, Wisconsin



HAPPINESS TRUNK  
 COUNTY  
 A.I. 62  
 "0"  
 200

