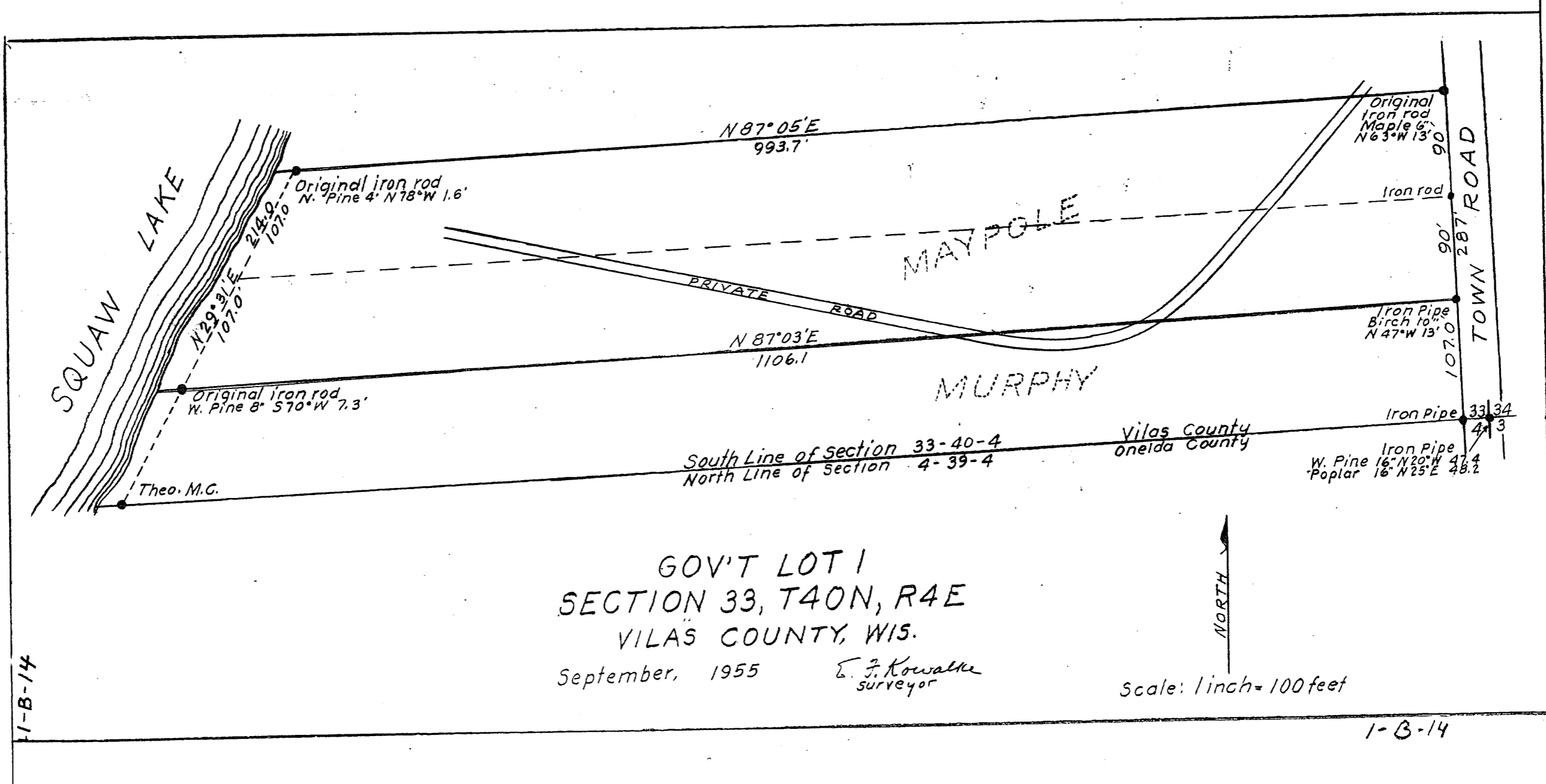


MAP # A 1628
 DATE FILED OCT 31 2005
 BY *PK*
 DESCRIPTION FILED
 ONEIDA CO. SURVEYOR'S OFFICE



GOV'T LOT 1
 SECTION 33, T40N, R4E
 VILAS COUNTY, WIS.

September, 1955 *E. J. Kowalko*
 surveyor

Scale: 1 inch = 100 feet