

A 1630

A 1630

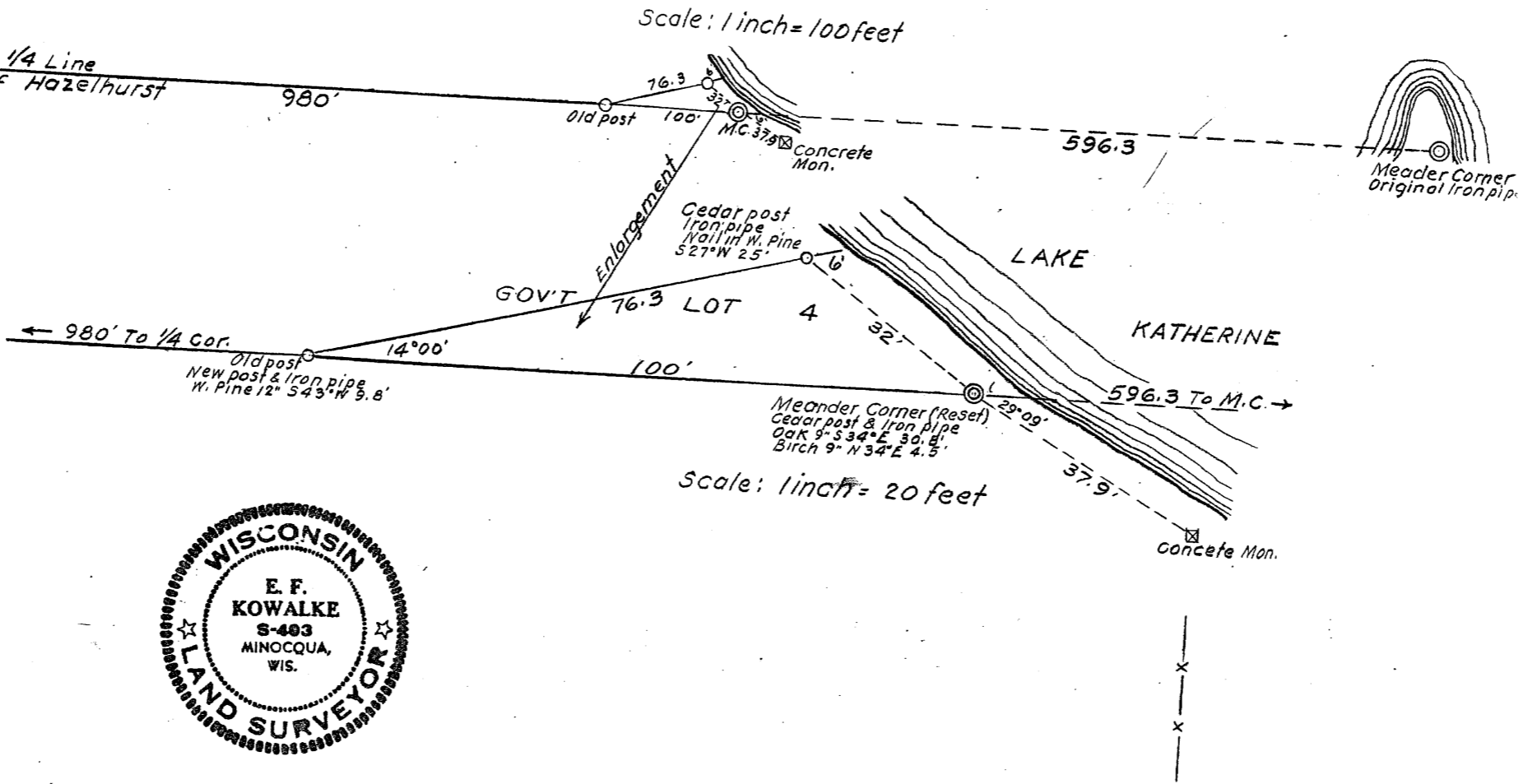
GOV'T LOT 4

GOV'T LOT 5

Highway 51

Scale: 1 inch = 100 feet

PART OF
GOV'T LOT 4
SECTION 3, T38N-R6E
 ONEIDA COUNTY, WISCONSIN
 Sept. 10, 1959
E. F. Kowalke
 Surveyor



1-B-44

MAP # **A 1630**
 DATE FILED **OCT. 31 2005**
 BY *[Signature]*
 DESCRIPTION FILED
 ONEIDA CO. SURVEYOR'S OFFICE

A 1630