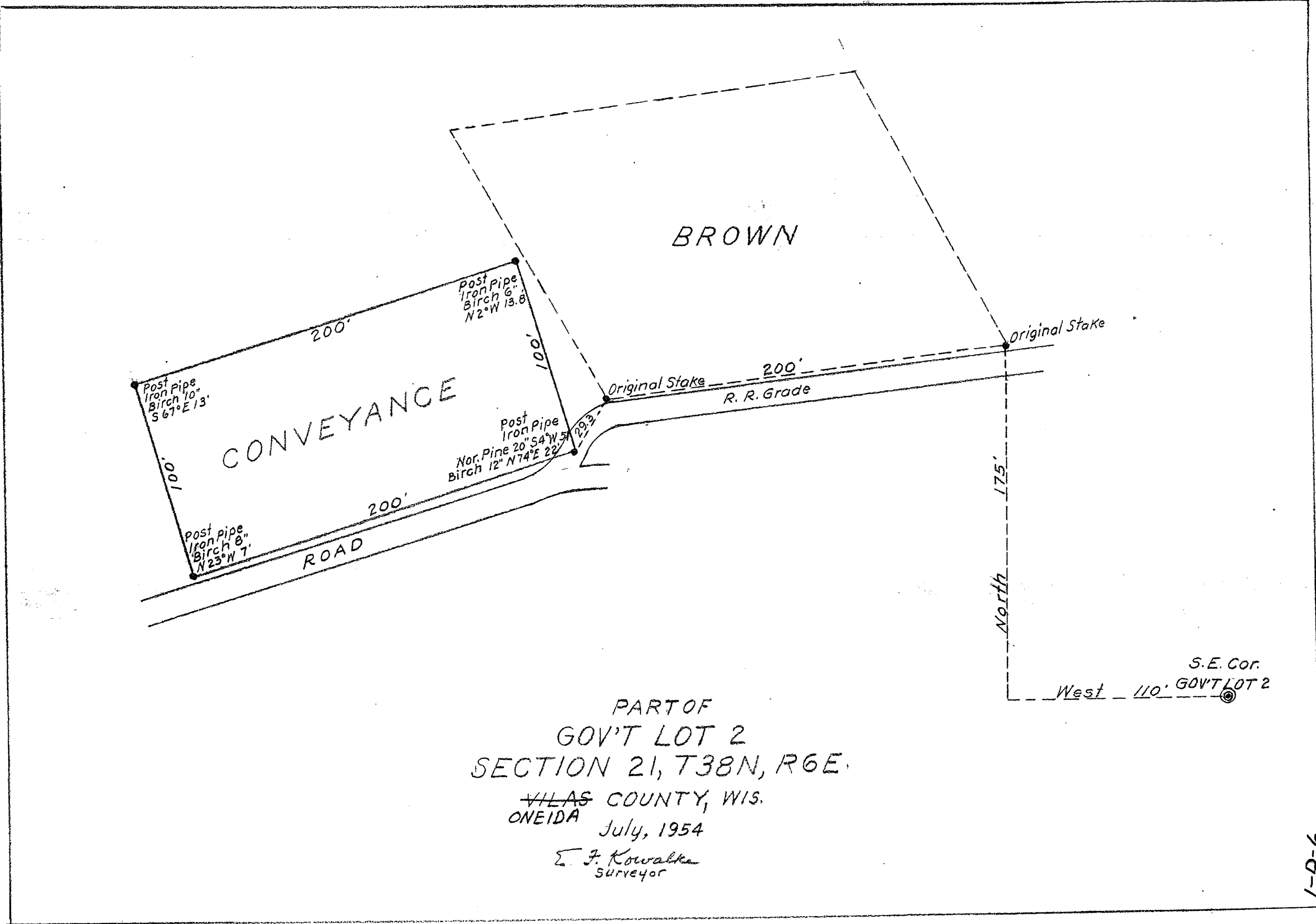


MAP # **A 1633**  
 DATE FILED **OCT 31 2005**  
 BY *[Signature]*  
 DESCRIPTION FILED .....  
 ONEIDA CO. SURVEYOR'S OFFICE

2



PART OF  
 GOV'T LOT 2  
 SECTION 21, T38N, R6E.  
 VILAS COUNTY, WIS.  
 ONEIDA July, 1954  
 E. F. Kowalko  
 Surveyor

A 1633

1-D-6

A 1633

A 1633