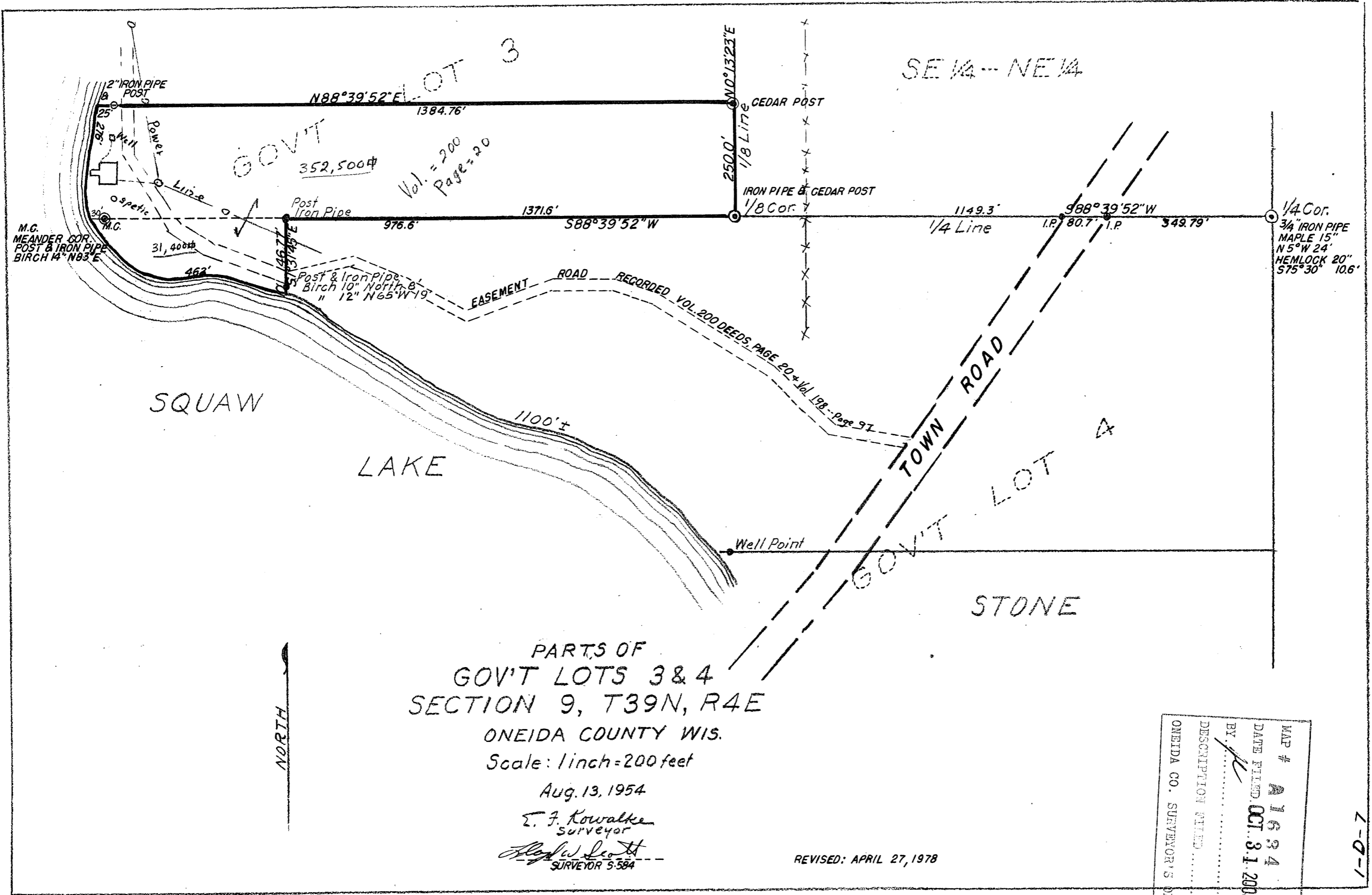


11634

3

11634



PARTS OF
 GOV'T LOTS 3 & 4
 SECTION 9, T39N, R4E

ONEIDA COUNTY WIS.
 Scale: 1 inch = 200 feet

Aug. 13, 1954

E. J. Kowalke
 Surveyor

Alfred W. Smith
 SURVEYOR 9-584

REVISED: APRIL 27, 1978

MAP #	A 1634
DATE FILED	OCT. 31. 2005
BY	<i>[Signature]</i>
DESCRIPTION FILED	
ONEIDA CO. SURVEYOR'S OFFICE	

L-2-1

11634

11634