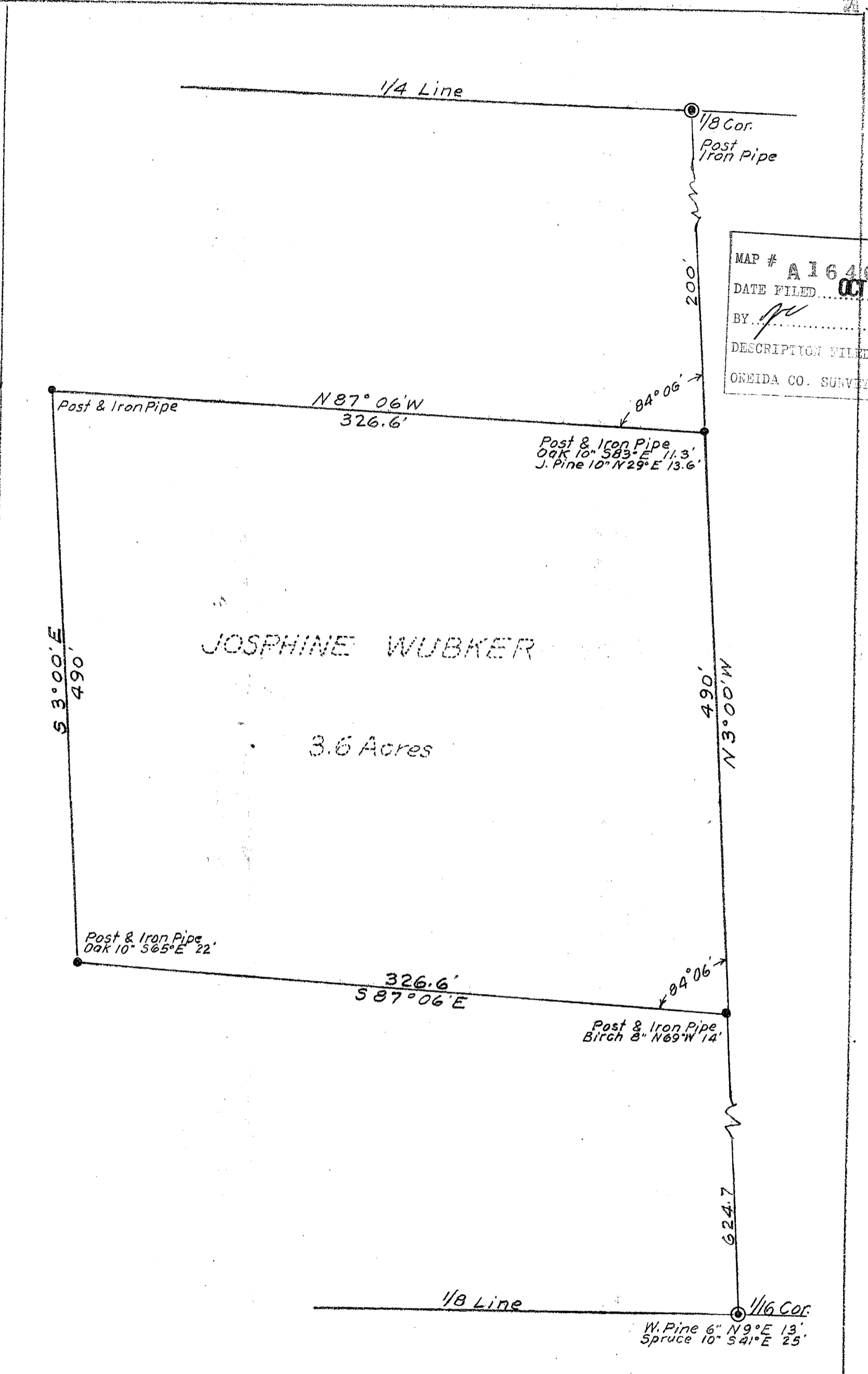


A 1640
3

A 1640



MAP # A 1640
 DATE FILED OCT 31 2005
 BY *[Signature]*
 DESCRIPTION FILED
 ONEIDA CO. SURVEYOR'S OFFICE

JOSEPHINE WUBKER

3.6 Acres

NORTH

PART OF
 NW 1/4 OF SW 1/4
 OF
 SECTION 2, T39N, R6E
 ONEIDA COUNTY, WIS.

Scale: 1 inch = 50 feet

May 1955

[Signature]
 Surveyor

A 1640 1-D-19

A 1640