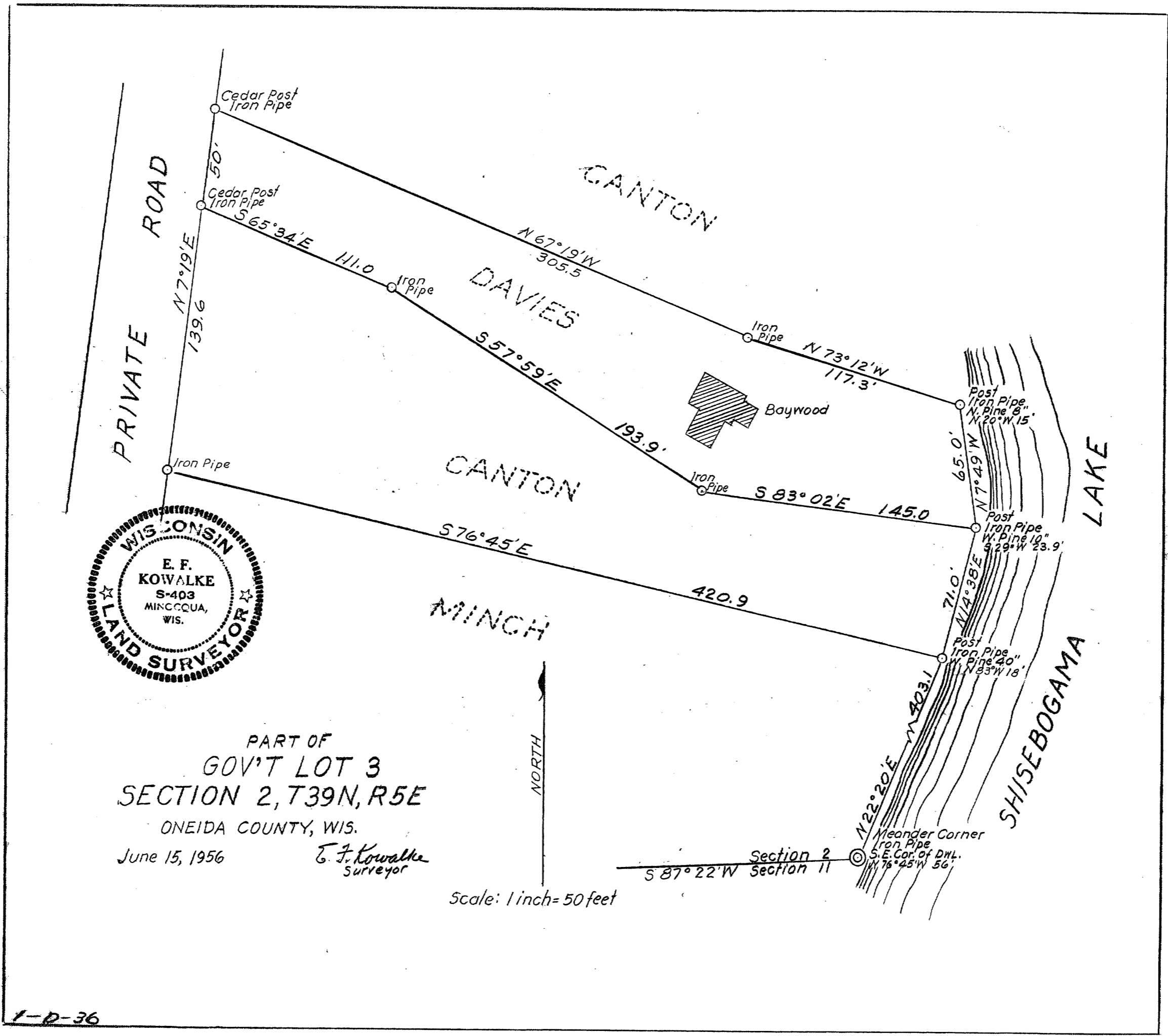


A1642

A1642

3



PART OF  
GOV'T LOT 3  
SECTION 2, T39N, R5E  
ONEIDA COUNTY, WIS.  
June 15, 1956  
E. F. Kowalke  
Surveyor

Scale: 1 inch = 50 feet

MAP # A1642  
DATE FILED OCT 31 2005  
BY [Signature]  
DESCRIPTION FILED  
ONEIDA CO. SURVEYOR'S OFFICE

1-D-36

A1642