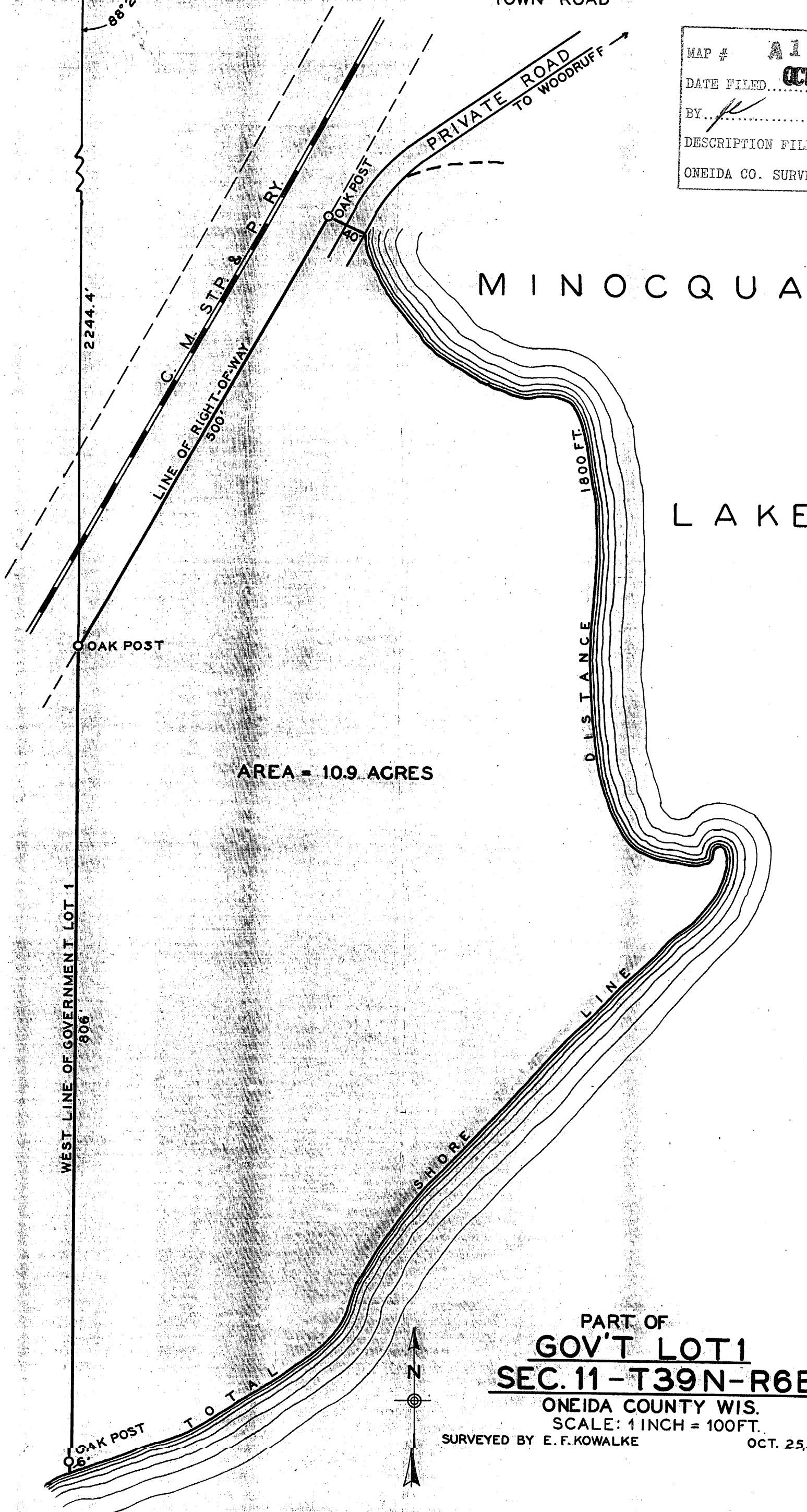


1/8 COR. VAR. 2° E NORTH LINE OF GOVERNMENT LOT 1 1339.0' 2 1 11 12 TOWN ROAD

MAP # A1648  
DATE FILED OCT 31 2005  
BY  
DESCRIPTION FILED  
ONEIDA CO. SURVEYOR'S OFFICE



AREA = 10.9 AGRES

WEST LINE OF GOVERNMENT LOT 1 806'

PART OF  
**GOV'T LOT 1**  
**SEC. 11 - T39N - R6E**  
ONEIDA COUNTY WIS.  
SCALE: 1 INCH = 100 FT.  
SURVEYED BY E. F. KOWALKE  
OCT. 25, 1944

