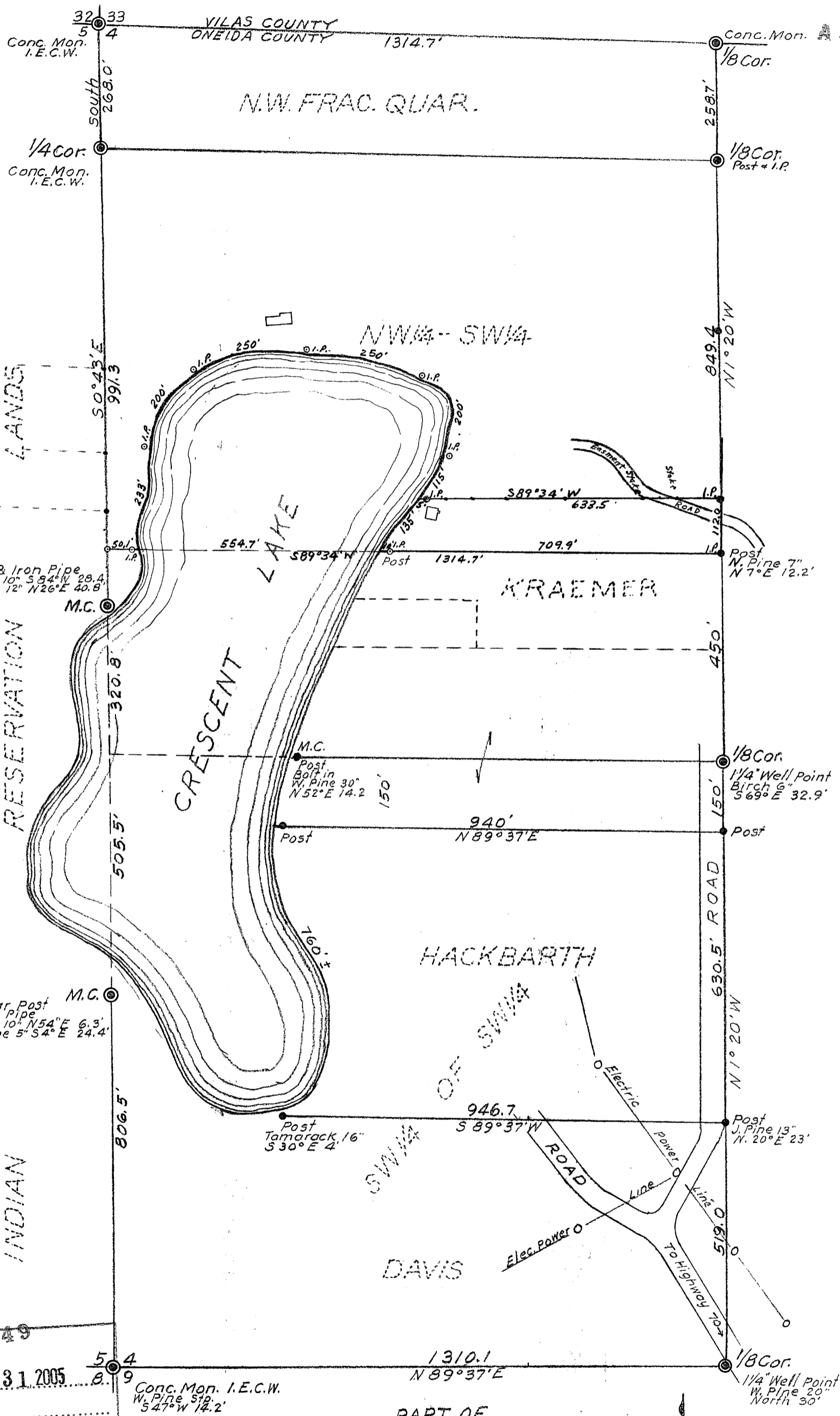


A1649

A1649



MAP # **A1649**
 DATE FILED **OCT 31 2005**
 BY *[Signature]*
 DESCRIPTION FILED
 ONEIDA CO. SURVEYOR'S OFFICE

PART OF
SECTION 4, T39N, R6E
 ONEIDA COUNTY, WIS.
 June, 1955
 REVISED JAN. 20, 1972
 " OCT 20, 1972
E. J. Kowalke
 SURVEYOR
[Signature]
 Surveyor S-584

A1649

A1649