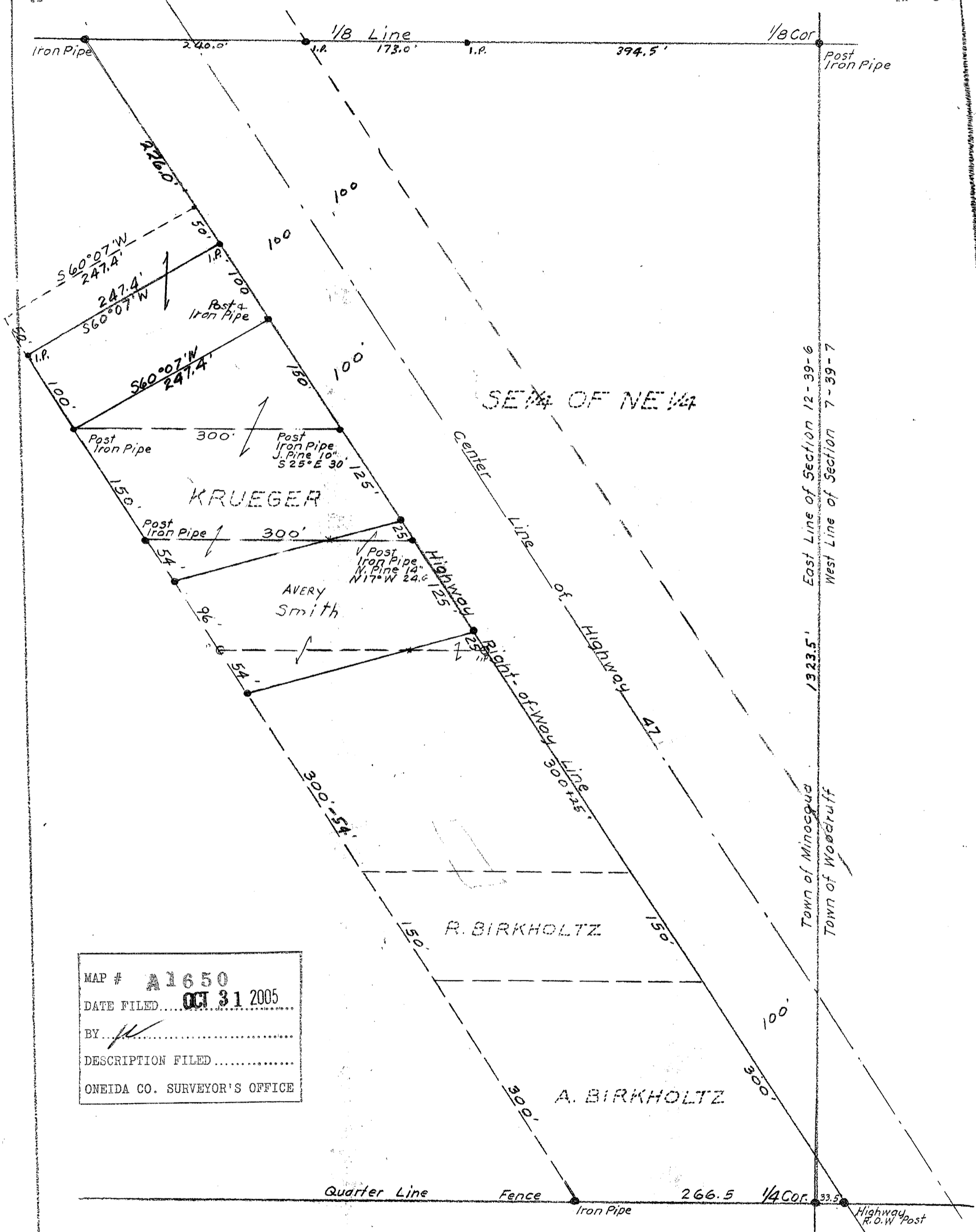


A1650

A1650



MAP # **A1650**  
 DATE FILED **OCT 31 2005**  
 BY *[Signature]*  
 DESCRIPTION FILED.....  
 ONEIDA CO. SURVEYOR'S OFFICE



SE 1/4 OF NE 1/4  
 SECTION 12, T39N, R6E  
 ONEIDA COUNTY, WIS.  
 Scale: 1 inch = 100 feet

June 1955  
 Revised: Aug 1962  
 Jan. 1964  
 Jun. 1973  
*E. J. Kowalke*  
 SURVEYOR



1-C-20

A1650

A1650